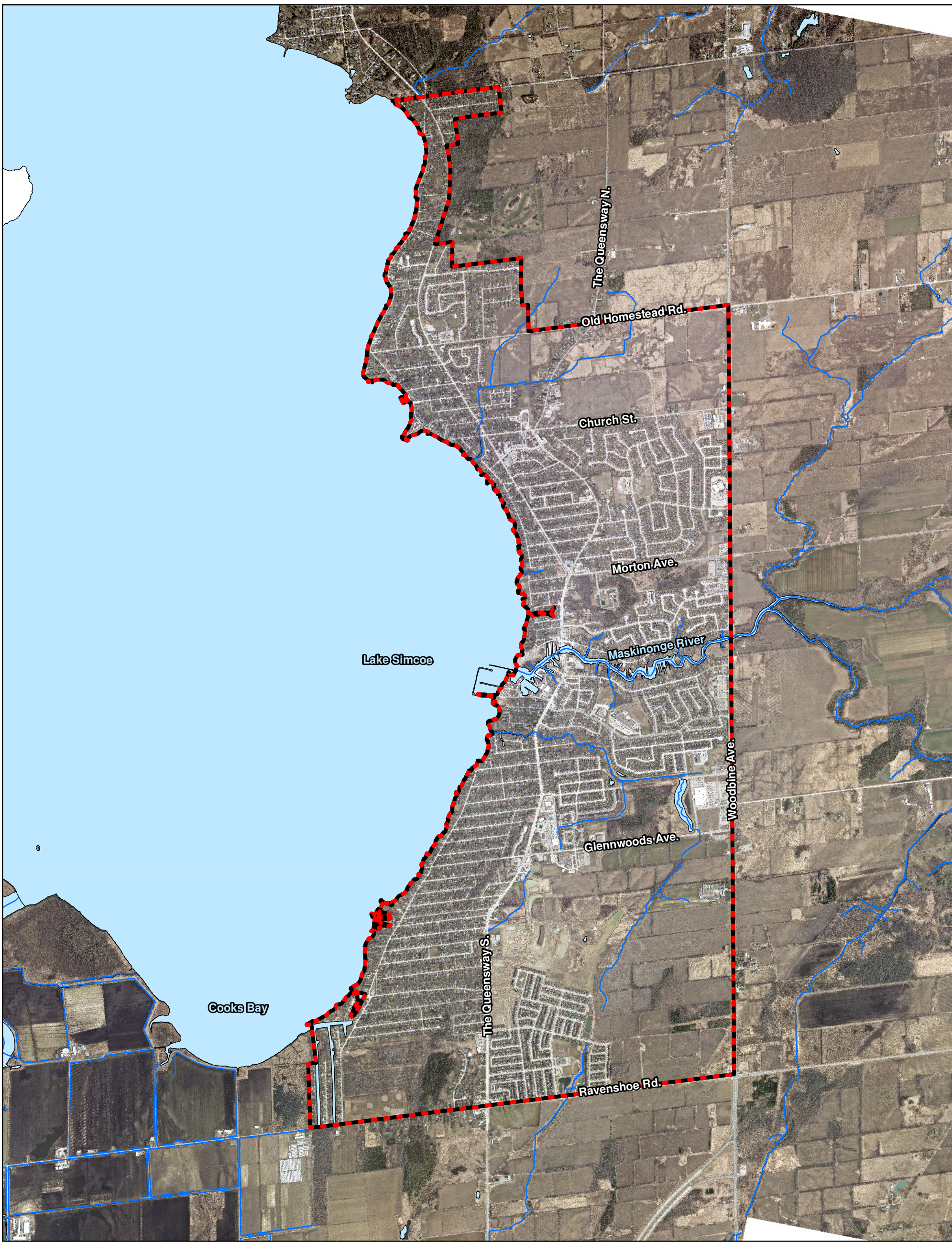




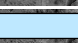
## ***Appendix II***

The mapping included in this Appendix was prepared as part of the background work for the Keswick Secondary Plan by Plan B Natural Heritage in 2018. The work carried out by Plan B was primarily a desk-top exercise, utilizing the existing information and data from the Town of Georgina, the Region of York, the Conservation Authority and the Province of Ontario. The mapping in this Appendix formed the basis of the Natural Heritage System identified on the Schedules of the Keswick Secondary Plan.

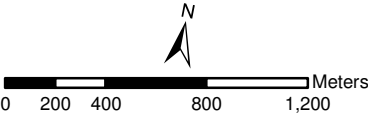
Since the production of the Background Mapping the delineation of the Natural Heritage System that is now articulated on the Schedules to the Keswick Secondary Plan has been refined through a review of detailed Environmental Impact Studies that have been accepted by the Town, approved Zoning By-laws and approved Draft Plans of Subdivision. As such, the Natural Heritage System originally identified in this Appendix, has been updated and adjusted.



**Legend**

-  Keswick Secondary Plan Boundary
-  Watercourse
-  Waterbody

Data Source  
- The Town of Georgina  
- The Regional Municipality of York  
- LSRCA



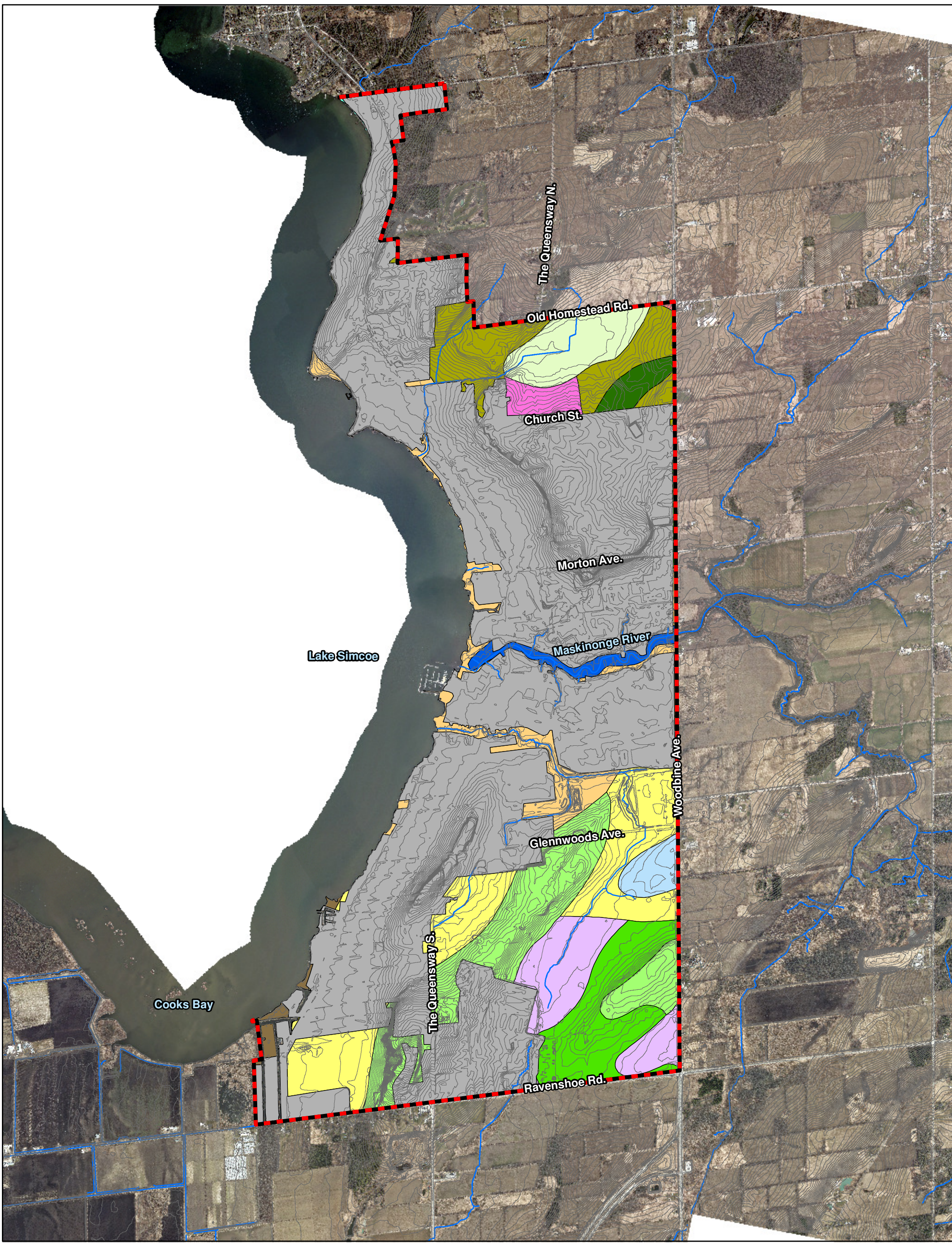
**PLAN B Natural Heritage**  
Landscape Ecology & Natural Heritage Planning

176 Fellowes Crescent  
Waterdown, ON  
L0R 2H3




**Keswick Secondary Plan Review**  
*Study Area*

Project #	2019-178
Date	November 2019
Scale	30,000
Prepared By: JJJ	Verified By: BDB





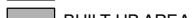










Figure #  
**1**



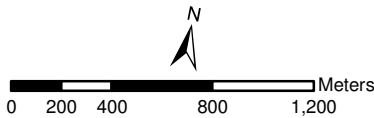
## Legend

-  Keswick Secondary Plan Boundary
-  Watercourse
-  Contour Line (1 m intervals)

## Soil Type

- |   |  |
|---|--|
|  BONDHEAD LOAM     |  LYONS LOAM          |
|  BOTTOM LAND       |  MUCK                |
|  BUILT UP AREA     |  OTONABEE SANDY LOAM |
|  CASHEL CLAY       |  SARGENT SANDY LOAM  |
|  GRANBY SANDY LOAM |  SIMCOE CLAY LOAM    |
|  GUERIN LOAM       |  SIMCOE SILT LOAM    |
|  GUERIN SANDY LOAM |  |
|  JEDDO CLAY LOAM   |  |
|  KING CLAY LOAM    |  |

Data Source  
- The Town of Georgina  
- LSRCA  
- © Queen's Printer for Ontario, 2019



## PLAN B Natural Heritage

Landscape Ecology & Natural Heritage Planning

176 Fellows Crescent  
Waterdown, ON  
L0R 2H3

## Keswick Secondary Plan Review

Soils and Topography

Project #	2019-178
Date	November 2019
Scale	30,000
Prepared By: JJJ	Verified By: BDB

Figure #

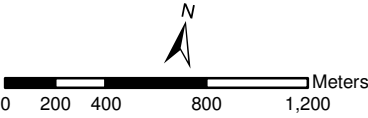
2



**Legend**

- Keswick Secondary Plan Boundary
- Watercourse
- Meanderbelt
- Regulation Limit
- Waterbody
- Floodplain
- Wetland
- Lake Shoreline Erosion Limit

Data Source  
- The Town of Georgina  
- The Regional Municipality of York  
- LSRCA



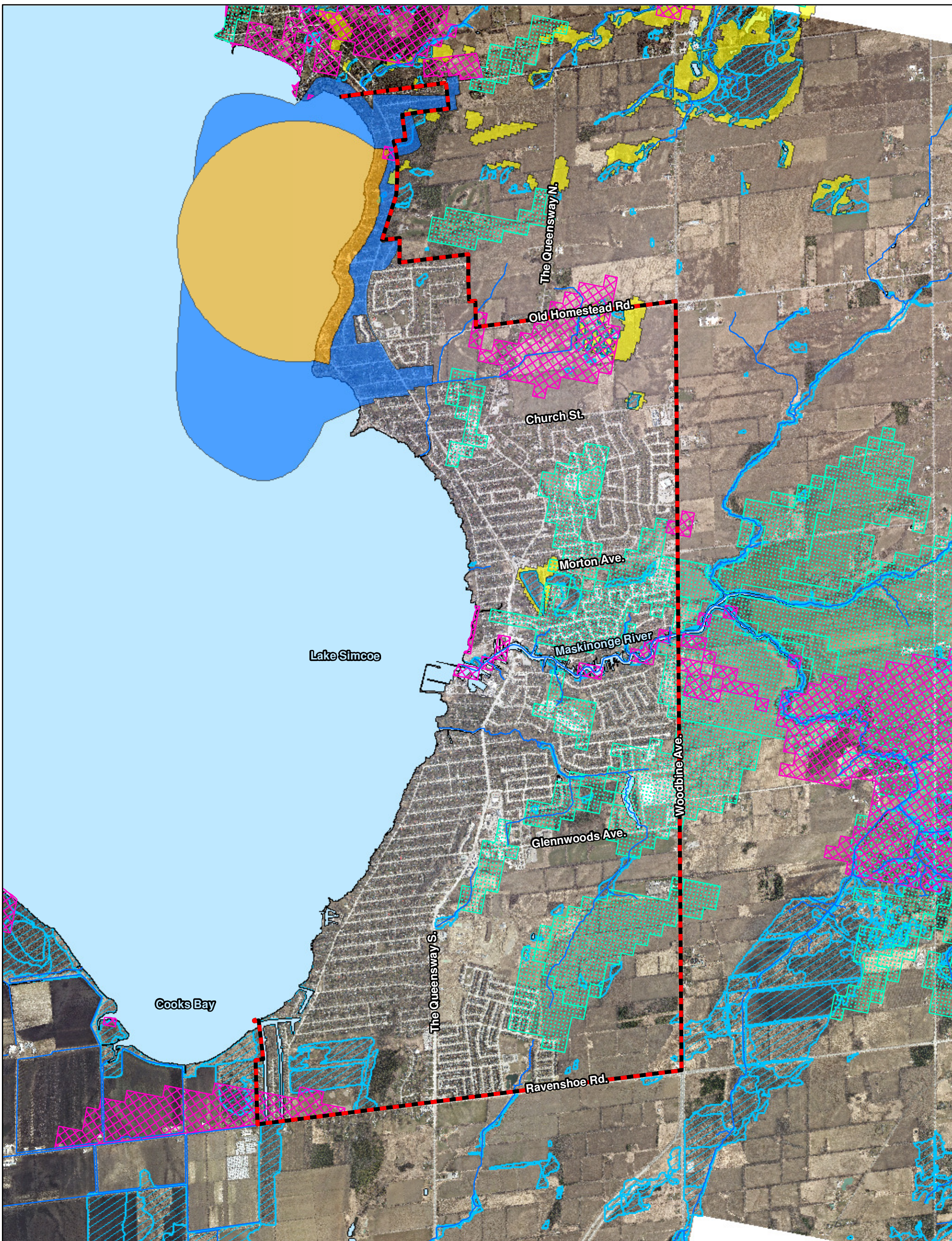
**PLAN B Natural Heritage**  
Landscape Ecology & Natural Heritage Planning

176 Fellows Crescent  
Waterdown, ON  
L0R 2H3

**Keswick Secondary Plan Review**  
*LSRCA Regulated Features*

Project #	2019-178
Date	November 2019
Scale	30,000
Prepared By: JJJ	Verified By: BDB

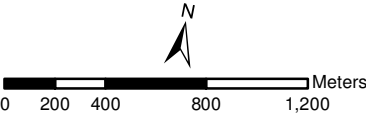
Figure #
3



**Legend**

- Keswick Secondary Plan Boundary
- Watercourse
- Waterbody
- Wetland
- Highly Vulnerable Aquifers
- Significant Groundwater Recharge Areas
- Intake Protection Zone 1
- Intake Protection Zone 2
- Ecologically Significant Groundwater Recharge Areas

Data Source  
- The Town of Georgina  
- The Regional Municipality of York  
- LSRCA  
- © Queen's Printer for Ontario, 2019



**PLAN B Natural Heritage**  
Landscape Ecology & Natural Heritage Planning

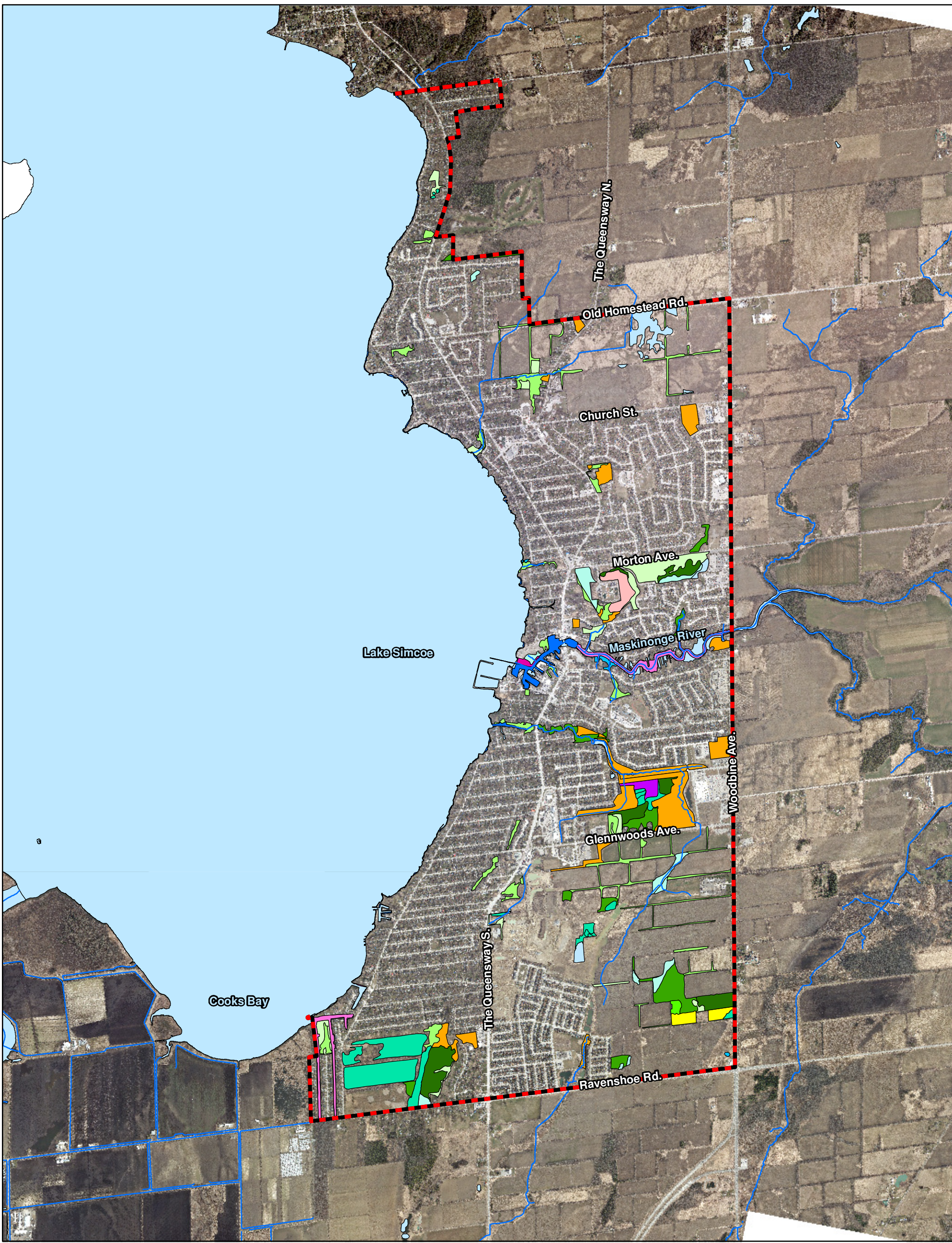
176 Fellows Crescent  
Waterdown, ON  
L0R 2H3

**Keswick Secondary Plan Review**  
*Hydrogeological Sensitive Areas*

Project #	2019-178
Date	November 2019
Scale	30,000
Prepared By: JJJ	Verified By: BDB

Figure #

4



## Legend

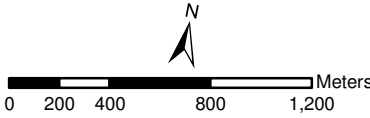
- Keswick Secondary Plan Boundary
- Watercourse
- Waterbody

### Vegetation Communities

- |                           |                                 |
|---------------------------|---------------------------------|
| Cultural Meadow (CUM)     | Open Aquatic (OAO)              |
| Cultural Plantation (CUP) | Mixed Shallow Aquatic (SAM)     |
| Cultural Thicket (CUT)    | Submerged Shallow Aquatic (SAS) |
| Cultural Woodland (CUW)   | Coniferous Swamp (SWC)          |
| Coniferous Forest (FOC)   | Deciduous Swamp (SWD)           |
| Deciduous Forest (FOD)    | Mixed Swamp (SWM)               |
| Mixed Forest (FOM)        | Thicket Swamp (SWT)             |
| Meadow Marsh (MAM)        |                                 |
| Shallow Marsh (MAS)       |                                 |

#### Data Source

- The Town of Georgina
- The Regional Municipality of York
- LSRCA



## PLAN B Natural Heritage

Landscape Ecology & Natural Heritage Planning

176 Fellows Crescent  
Waterdown, ON  
L0R 2H3

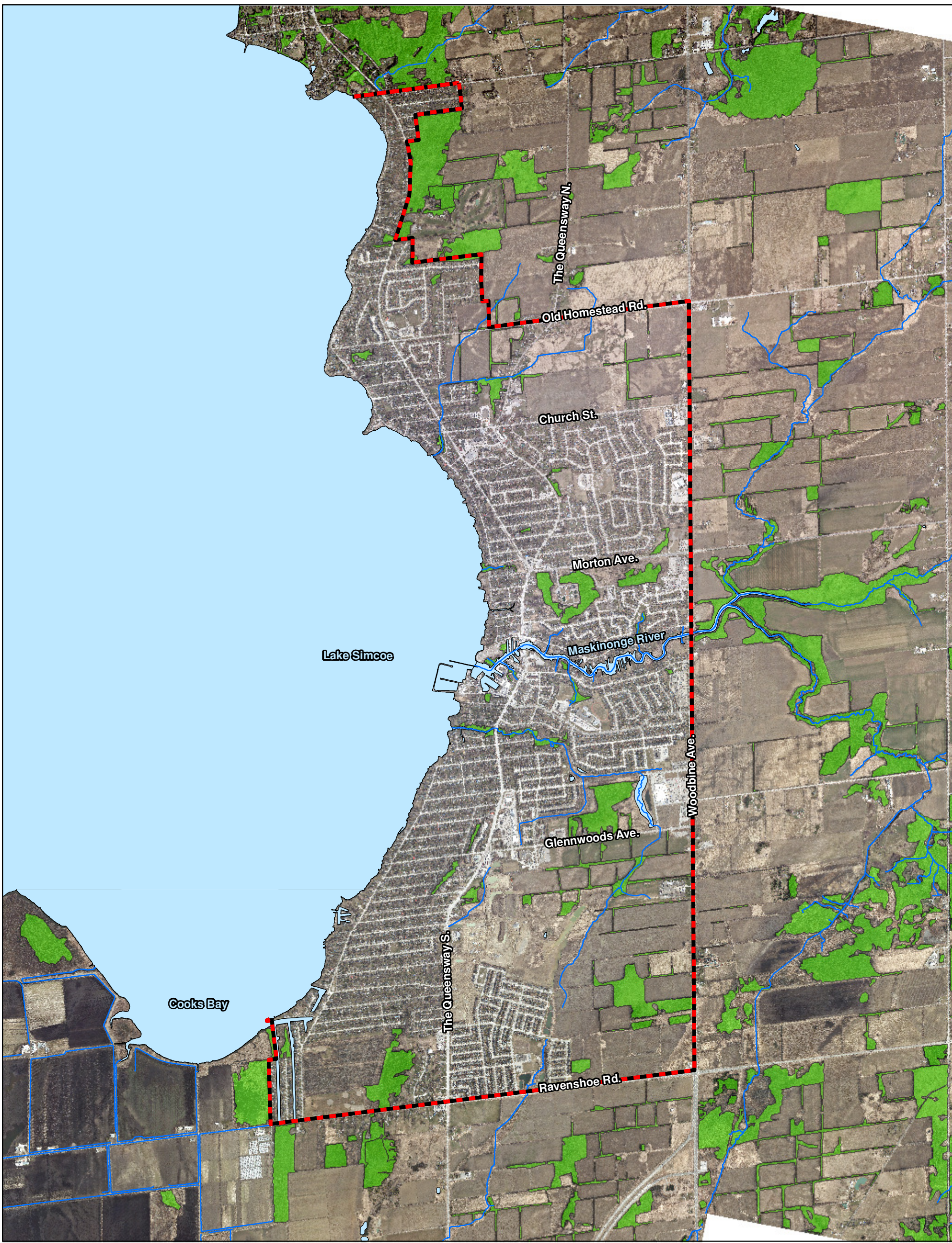
## Keswick Secondary Plan Review

### Vegetation Communities





Project #	2019-178
Date	November 2019
Scale	30,000
Prepared By: JJJ	Verified By: BDB

Figure #

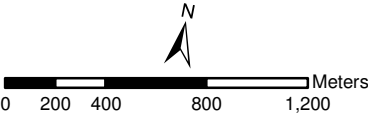
5



**Legend**

-  Keswick Secondary Plan Boundary
-  Watercourse
-  Waterbody
-  Woodland

Data Source  
- The Town of Georgina  
- The Regional Municipality of York  
- LSRCA  
- © Queen's Printer for Ontario, 2019



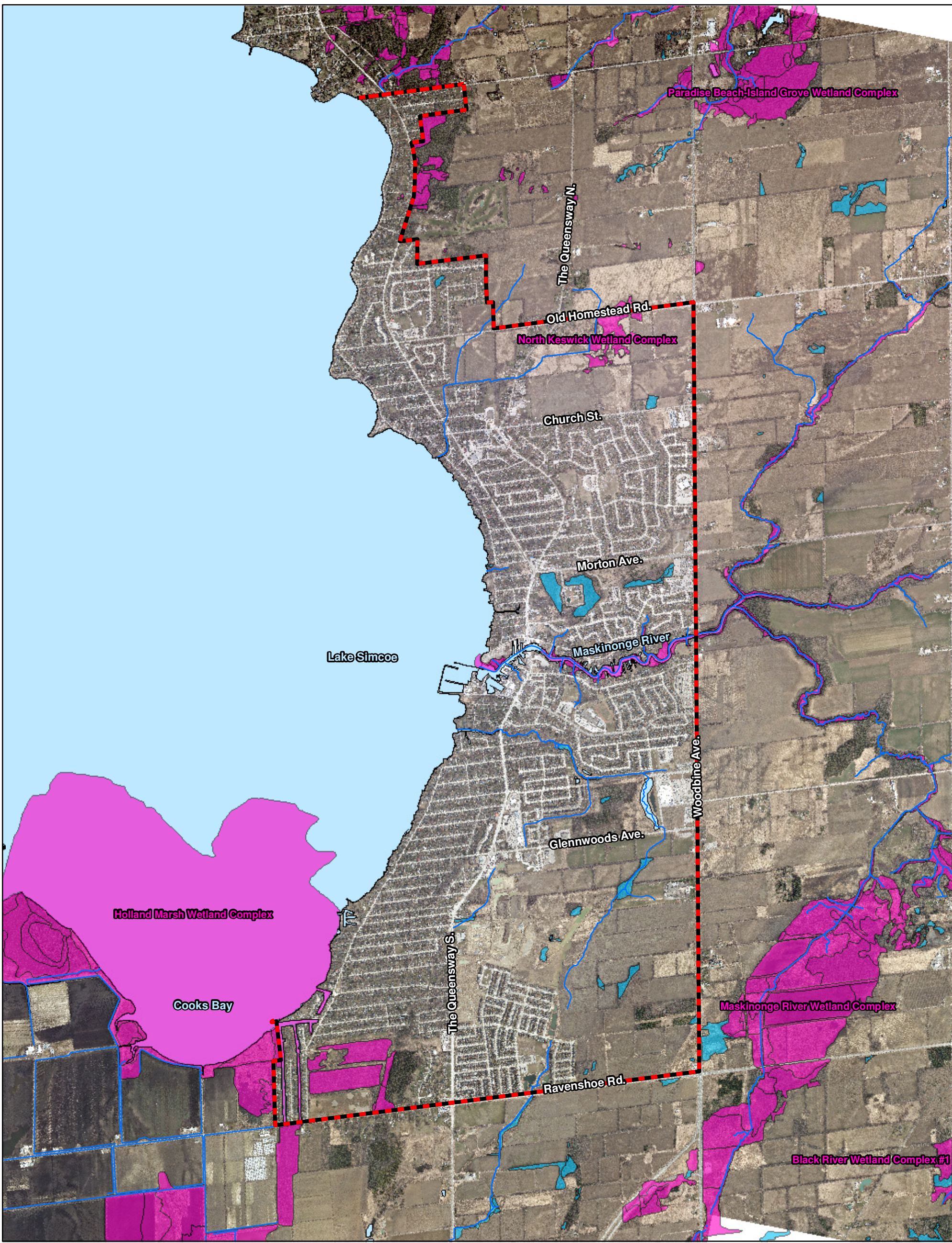
**PLAN B Natural Heritage**  
Landscape Ecology & Natural Heritage Planning

176 Fellows Crescent  
Waterdown, ON  
L0R 2H3

**Keswick Secondary Plan Review**  
*Woodlands*

Project #	2019-178
Date	November 2019
Scale	30,000
Prepared By: JJJ	Verified By: BDB

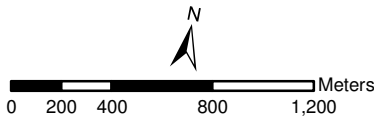
Figure #  
**6**



**Legend**

- Keswick Secondary Plan Boundary
- Watercourse
- Waterbody
- Wetland - Evaluated as Provincially Significant
- Wetland - Not Evaluated per the Ontario Wetland Evaluation System

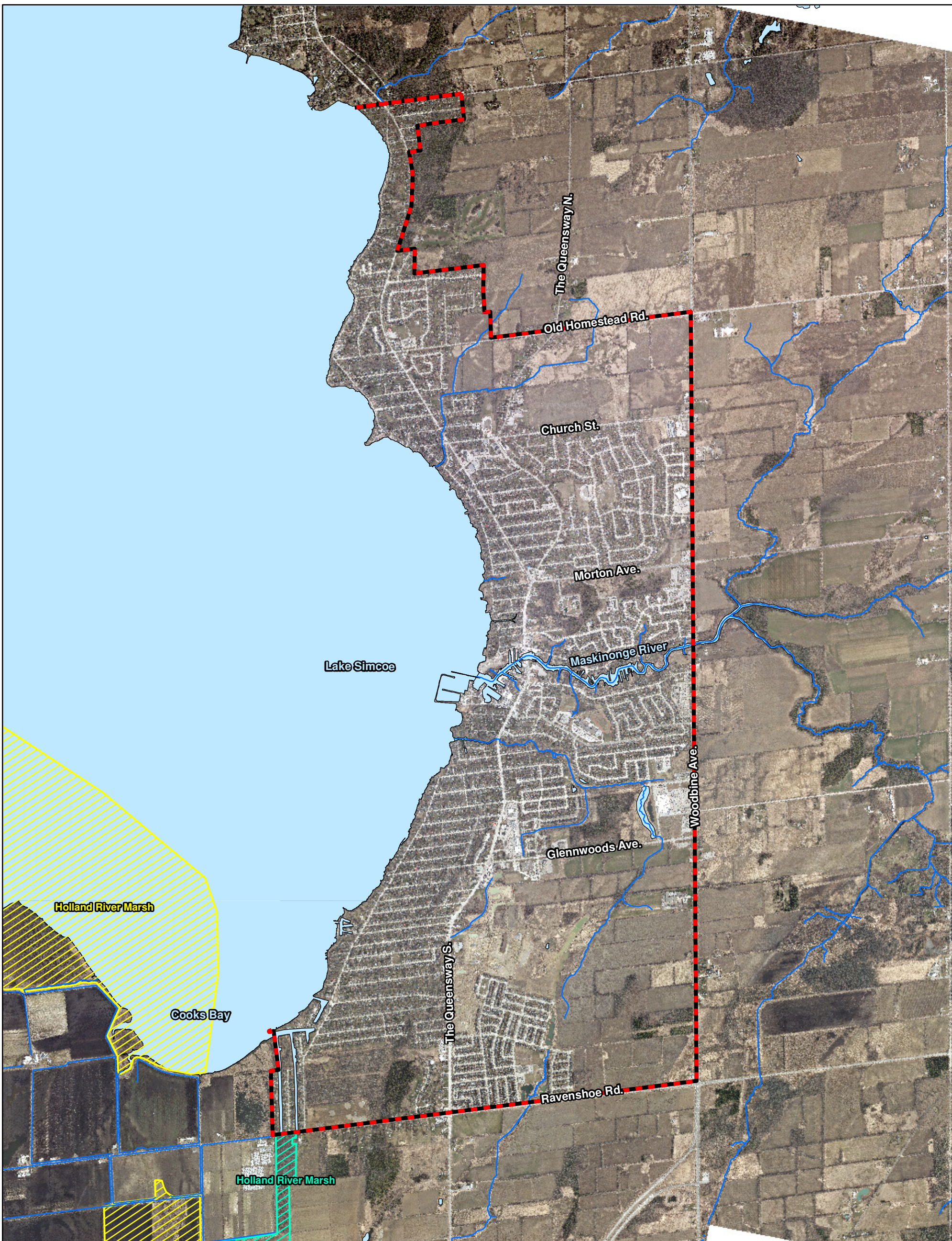
Data Source  
- The Town of Georgina  
- The Regional Municipality of York  
- LSRCA








**PLAN B Natural Heritage**  
Landscape Ecology & Natural Heritage Planning  
176 Fellowes Crescent  
Waterdown, ON  
L0R 2H3

**Keswick Secondary Plan Review**  
*Wetlands*

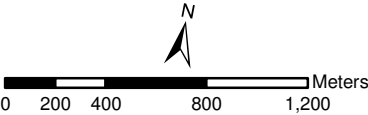
Project #	2019-178	Figure #  <b>7</b>
Date	November 2019	
Scale	30,000	
Prepared By: JJJ	Verified By: BDB	



**Legend**

-  Keswick Secondary Plan Boundary
-  Watercourse
-  Waterbody
-  Area of Natural and Scientific Interest (Life Science) - Provincial
-  Candidate Area of Natural and Scientific Interest (Life Science) - Provincial

Data Source  
- The Town of Georgina  
- LSRCA  
- © Queen's Printer for Ontario, 2019



**PLAN B Natural Heritage**  
Landscape Ecology & Natural Heritage Planning

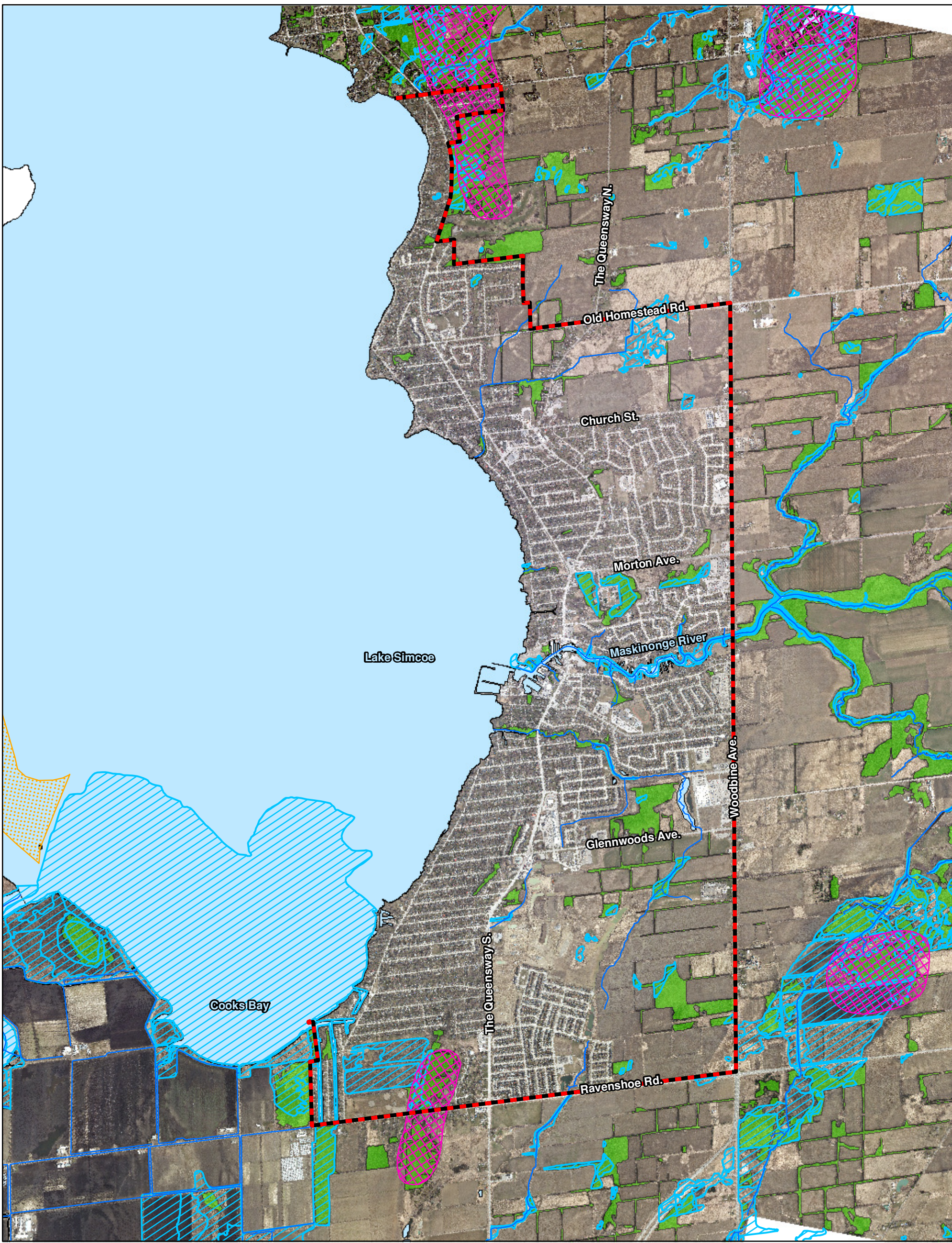
176 Fellows Crescent  
Waterdown, ON  
L0R 2H3

**Keswick Secondary Plan Review**  
*Areas of Natural and Scientific Interest*








Project #	2019-178
Date	November 2019
Scale	30,000
Prepared By: JJJ	Verified By: BDB

Figure #

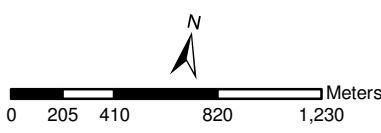
8



**Legend**

-  Keswick Secondary Plan Boundary
-  Watercourse
-  Waterbody
-  Wetland
-  Woodland
-  Deer Wintering Area (Stratum 2)
-  Waterfowl Staging Area

Data Source  
- The Town of Georgina  
- The Regional Municipality of York  
- LSRCA  
- © Queen's Printer for Ontario, 2019



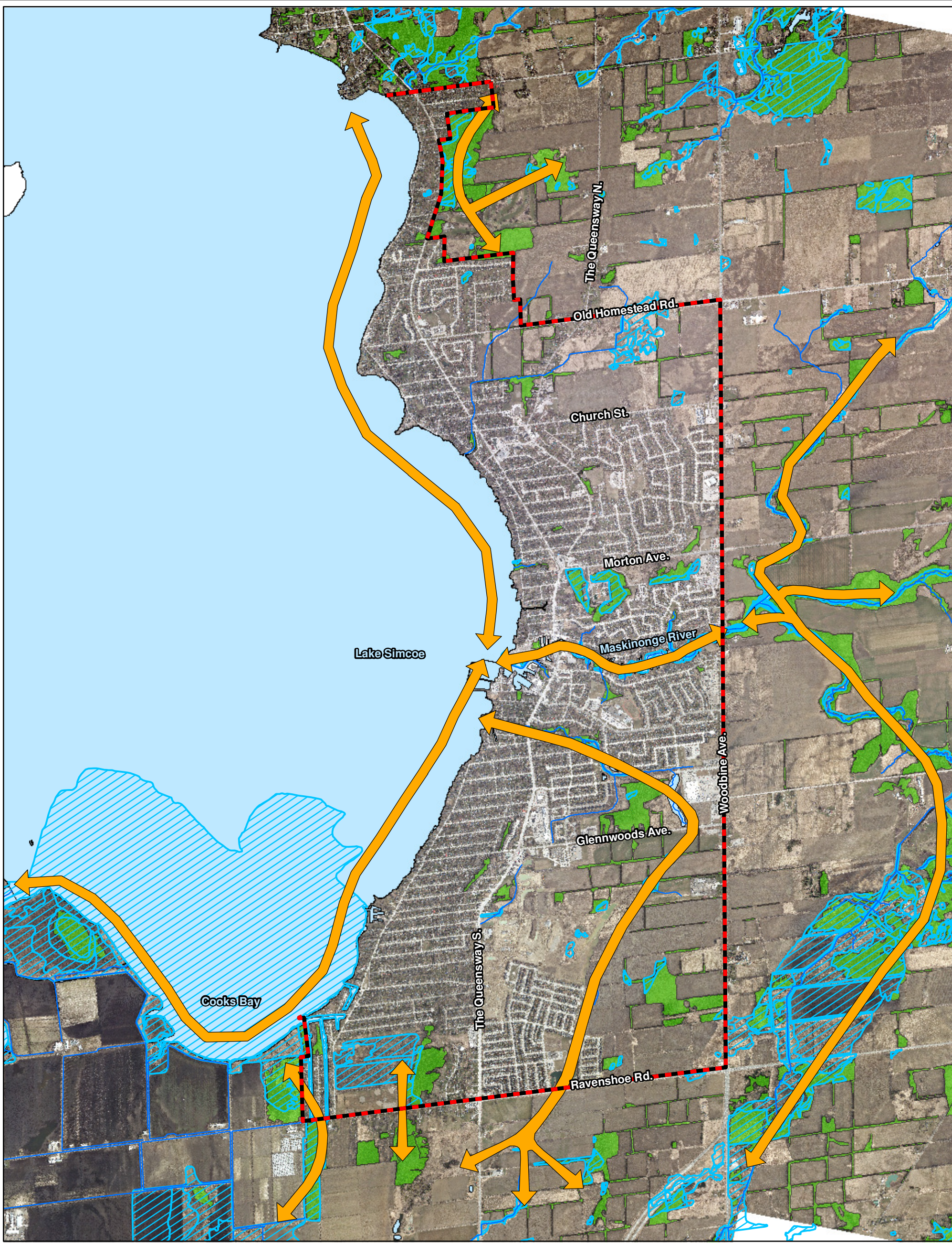
**PLAN B Natural Heritage**  
Landscape Ecology & Natural Heritage Planning

176 Fellows Crescent  
Waterdown, ON  
L0R 2H3

**Keswick Secondary Plan Review**  
*Significant Wildlife Habitat Features*

Project #	2019-178
Date	November 2019
Scale	30,000
Prepared By: JJJ	Verified By: BDB

Figure #
9



**Legend**

Keswick Secondary Plan Boundary

Watercourse

Waterbody

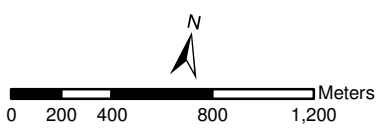
Wetland

Woodland

Species Dispersal Corridors

Data Source

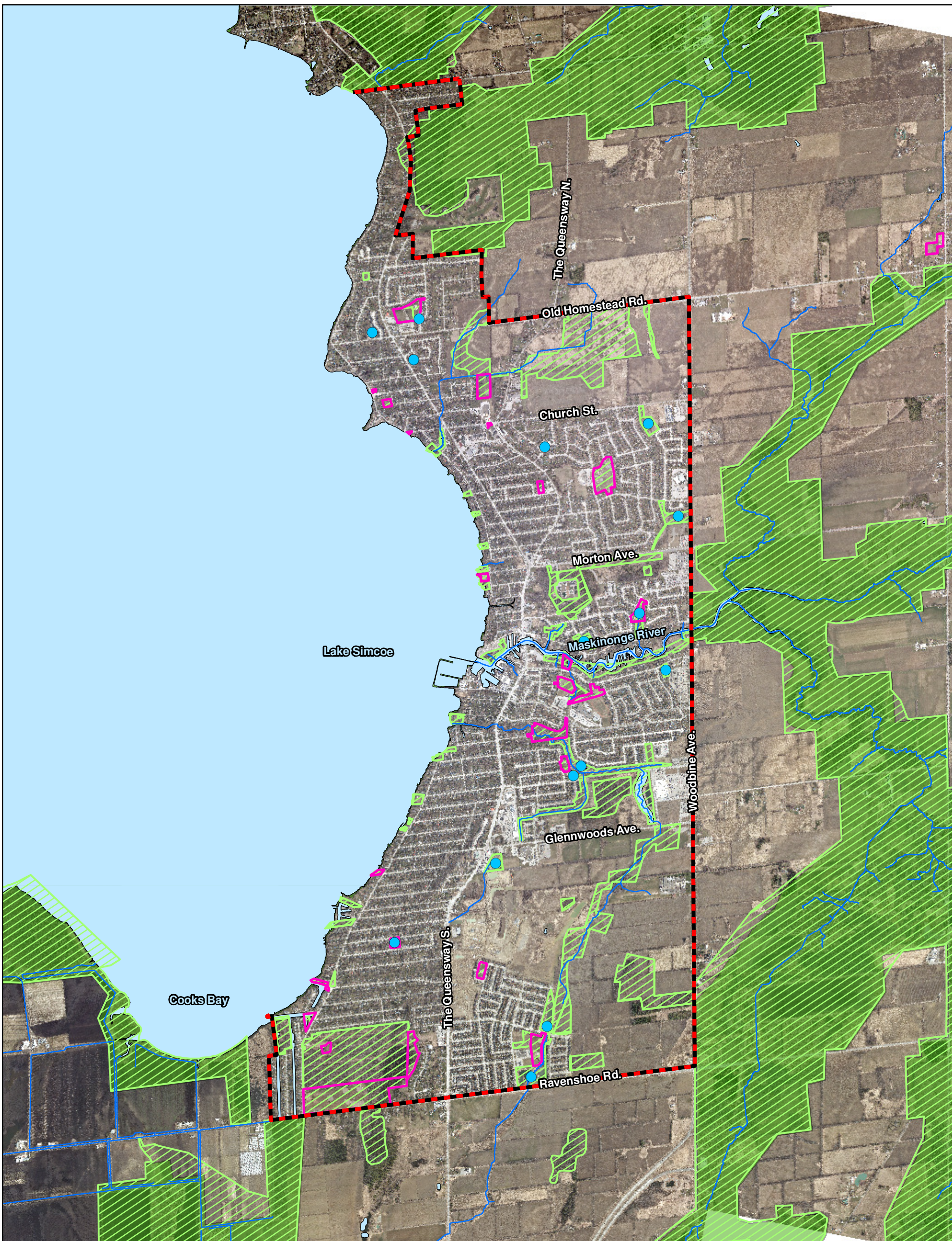
- The Town of Georgina
- The Regional Municipality of York
- LSRCA
- © Queen's Printer for Ontario, 2019



**PLAN B Natural Heritage**  
Landscape Ecology & Natural Heritage Planning  
176 Fellows Crescent  
Waterdown, ON  
L0R 2H3

**Keswick Secondary Plan Review**  
*Species Dispersal Corridors and  
Connections*

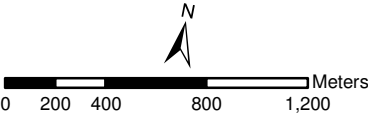
Project #	2019-178	Figure #  <b>10</b>
Date	November 2019	
Scale	30,000	
Prepared By: JJJ	Verified By: BDB	



**Legend**

- Keswick Secondary Plan Boundary
- Watercourse
- Town Park
- Storm Water Management Pond
- Waterbody
- Greenbelt Plan NHS
- Greenlands System (Region of York/Town of Georgina)

Data Source  
- The Town of Georgina  
- The Regional Municipality of York  
- LSRCA  
- © Queen's Printer for Ontario, 2019



**PLAN B Natural Heritage**  
Landscape Ecology & Natural Heritage Planning

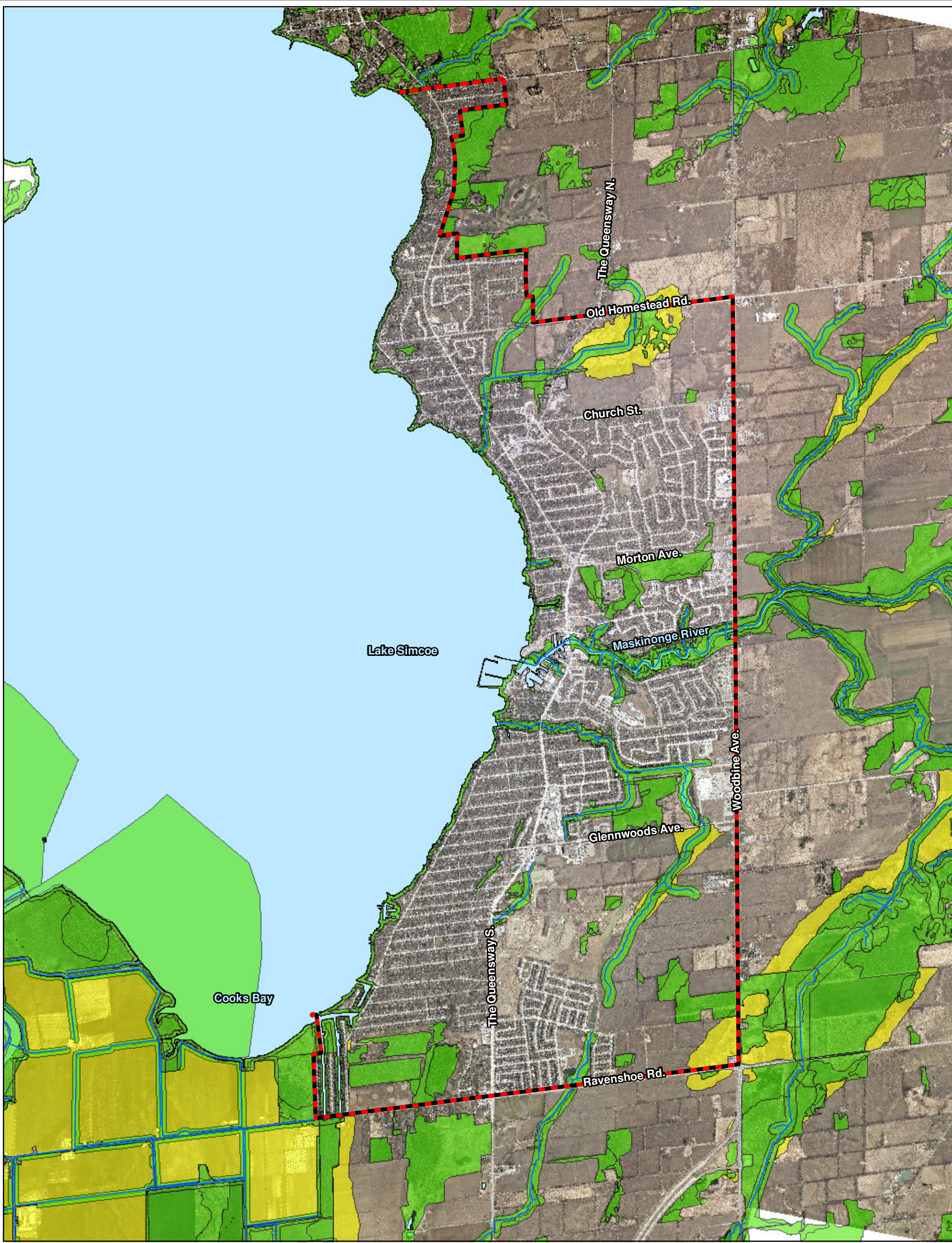
176 Fellows Crescent  
Waterdown, ON  
L0R 2H3

**Keswick Secondary Plan Review**  
*Preliminary NHS*

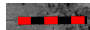

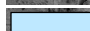
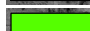

Project #	2019-178
Date	November 2019
Scale	30,000
Prepared By: JJJ	Verified By: BDB

Figure #

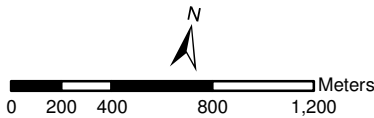
11



## Legend

-  Keswick Secondary Plan Boundary
-  Watercourse
-  Waterbody
-  Core Natural Heritage Feature
-  Corridor/Floodplain Enhancement Opportunity

Data Source  
- The Town of Georgina  
- The Regional Municipality of York  
- LSRCA



## PLAN B Natural Heritage

Landscape Ecology & Natural Heritage Planning

176 Fellows Crescent  
Waterdown, ON  
L0R 2H3

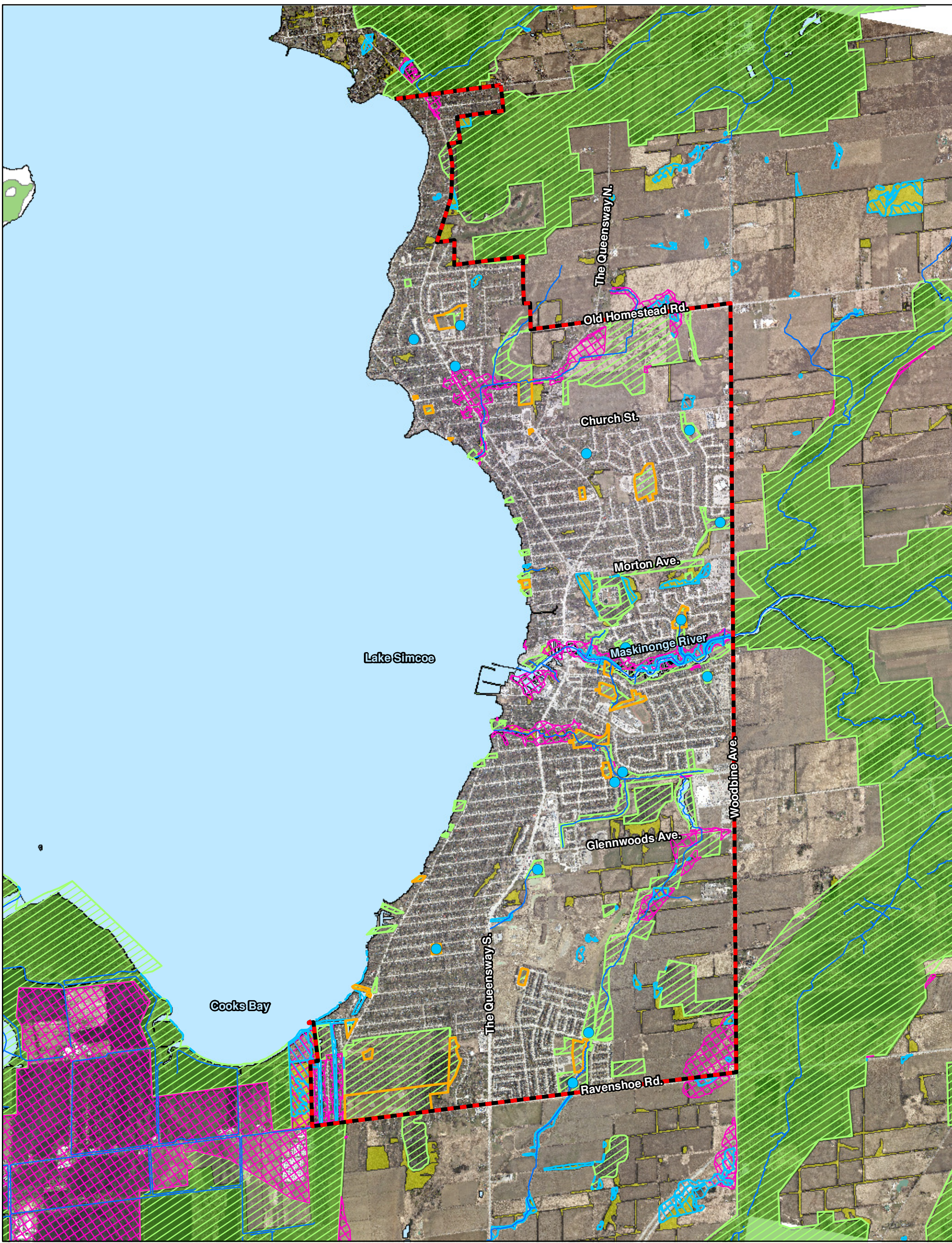
## Keswick Secondary Plan Review

Core Natural Areas and Floodplain/Corridor Enhancements (LSRCA)

Project #	2019-178
Date	November 2019
Scale	30,000
Prepared By: JJJ	Verified By: BDB

Figure #

12

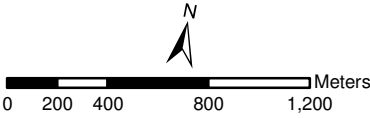


**Legend**

- Keswick Secondary Plan Boundary
- Watercourse
- Town Park
- Storm Water Management Pond
- Waterbody
- Wetland
- Woodland
- Floodplain

- Greenbelt Plan NHS
- Greenlands System (Region of York/Town of Georgina)

Data Source  
- The Town of Georgina  
- The Regional Municipality of York  
- LSRCA  
- © Queen's Printer for Ontario, 2019



**PLAN B Natural Heritage**  
Landscape Ecology & Natural Heritage Planning

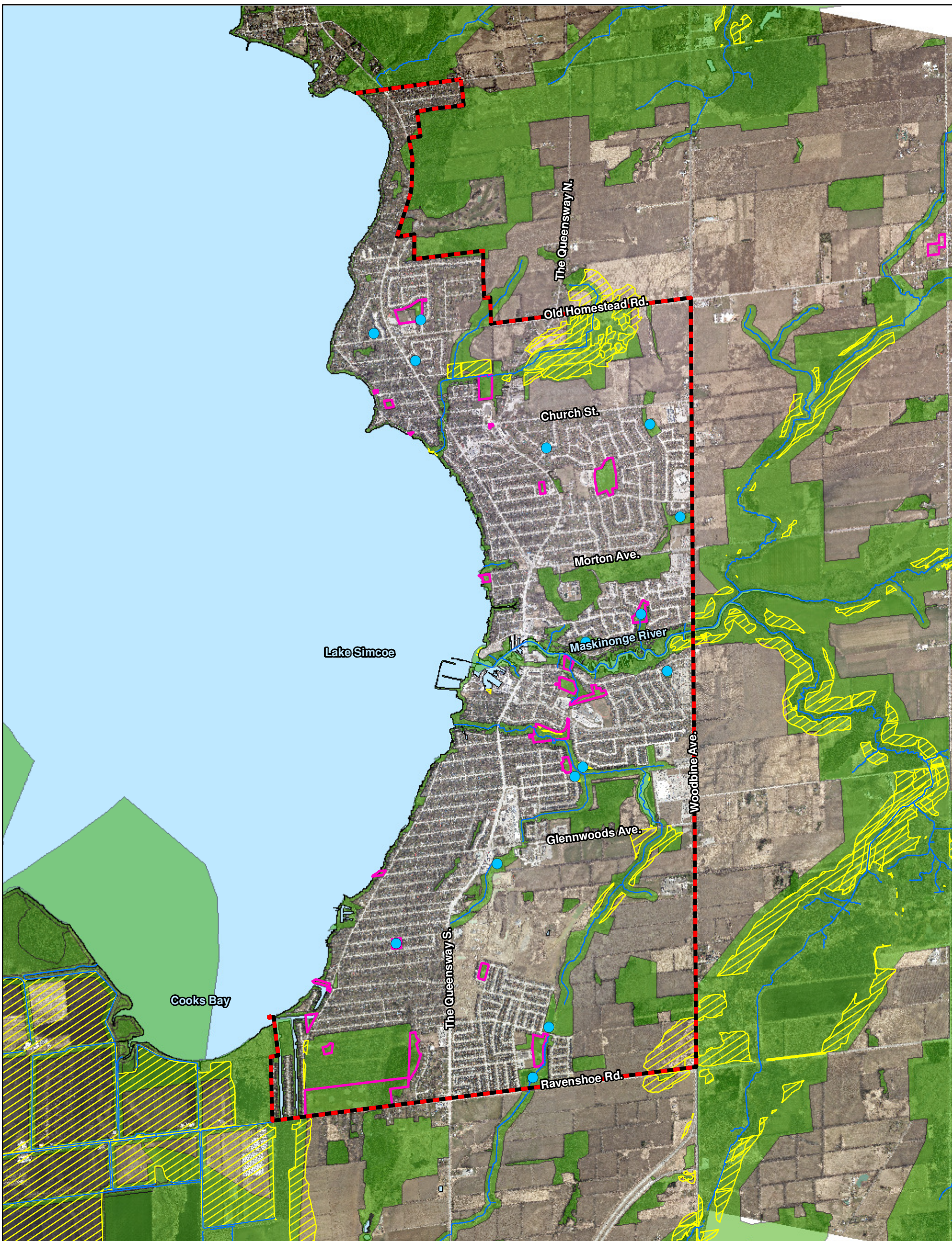
176 Fellows Crescent  
Waterdown, ON  
L0R 2H3

**Keswick Secondary Plan Review**  
*NHS Features Outside of the Town/Region  
Greenlands System*

Project #	2019-178
Date	November 2019
Scale	30,000
Prepared By: JJJ	Verified By: BDB

Figure #

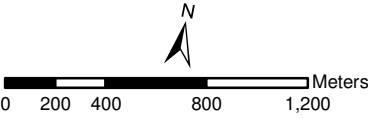
13



**Legend**

- Keswick Secondary Plan Boundary
- Watercourse
- Town Park
- Storm Water Management Pond
- Waterbody
- Natural Heritage System
- Enhancement Opportunities

Data Source  
- The Town of Georgina  
- The Regional Municipality of York  
- LSRCA  
- © Queen's Printer for Ontario, 2019



**PLAN B Natural Heritage**  
Landscape Ecology & Natural Heritage Planning

176 Fellows Crescent  
Waterdown, ON  
L0R 2H3

**Keswick Secondary Plan Review**  
*Composite Natural Heritage System  
(Town/Region/LSRCA)*

Project #	2019-178
Date	November 2019
Scale	30,000
Prepared By: JJJ	Verified By: BDB

Figure #

14