

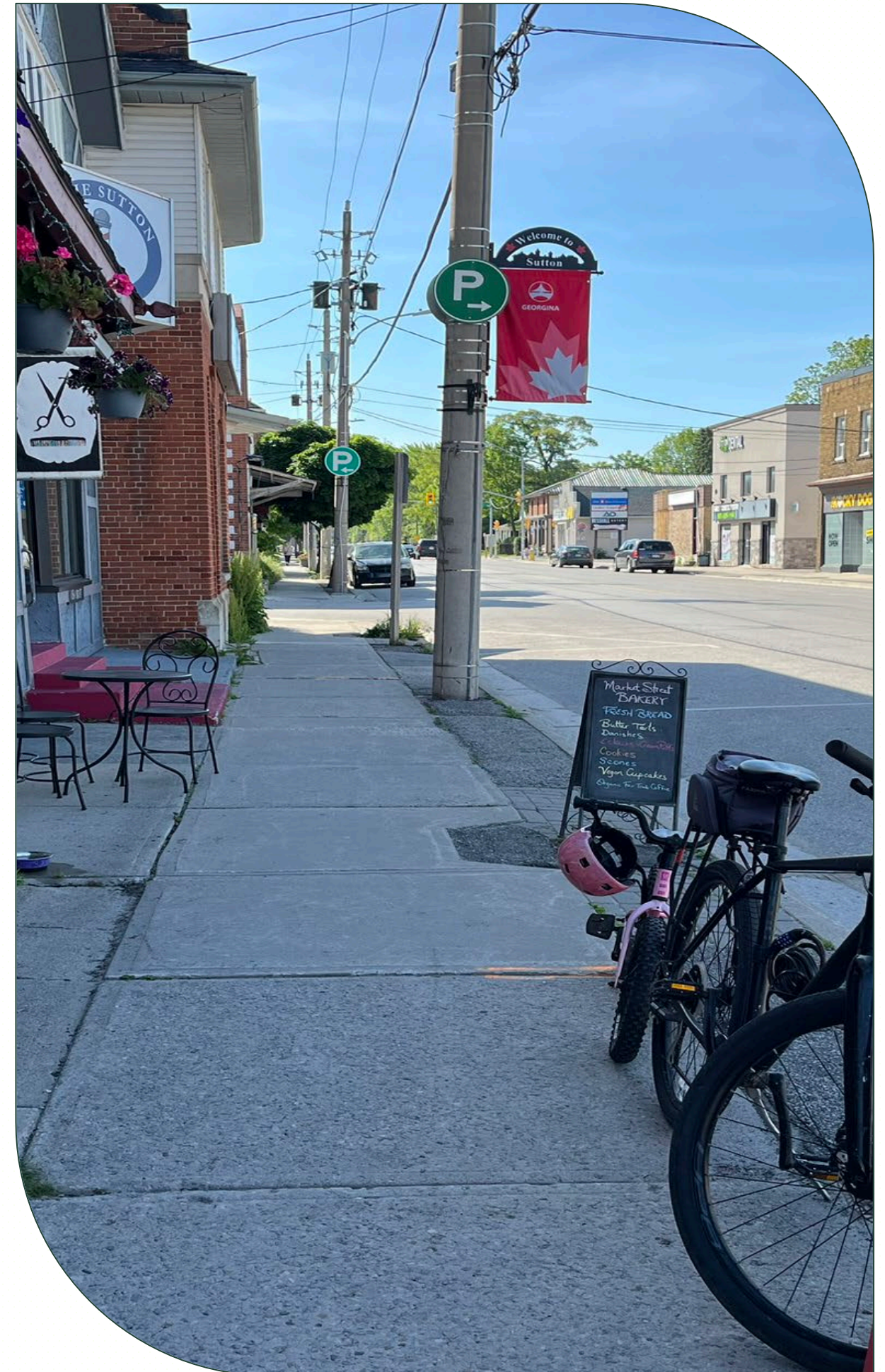


GEORGINA

Public Open House

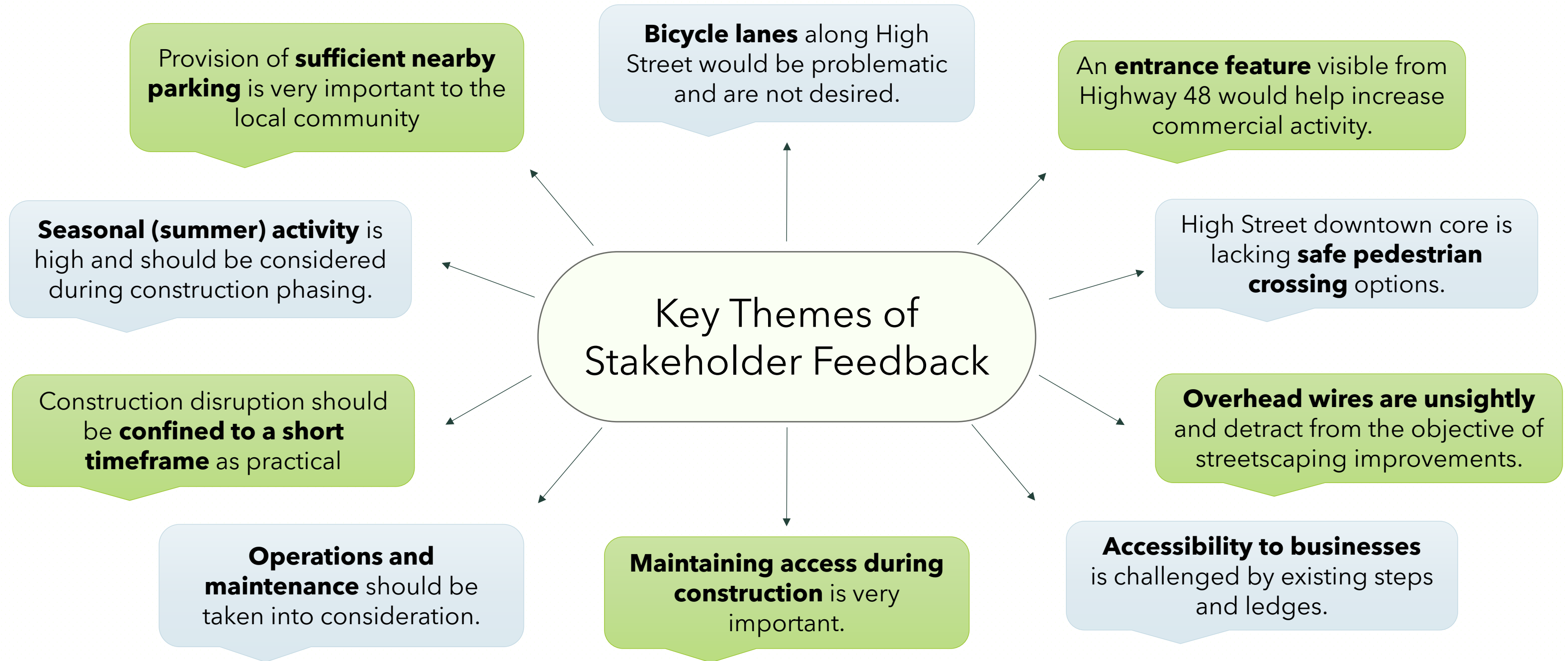
High Street Streetscape and Infrastructure Redevelopment

June 10, 2025



What We've Heard

Total Comments Received: 139



Examples of Streetscape Improvement Features



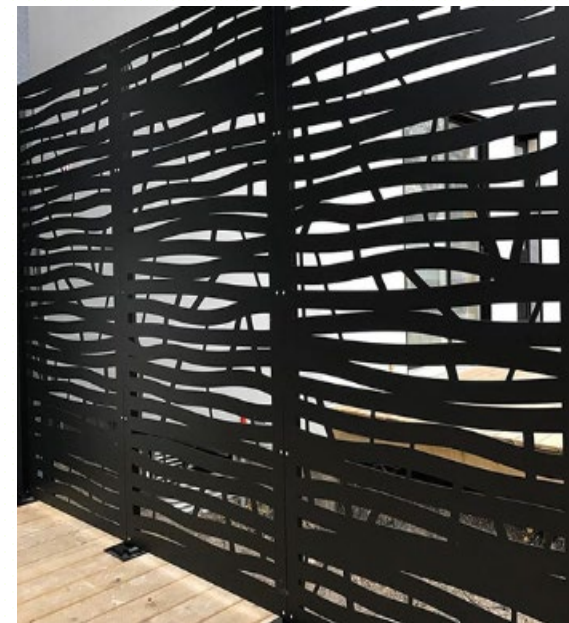
Site Furniture



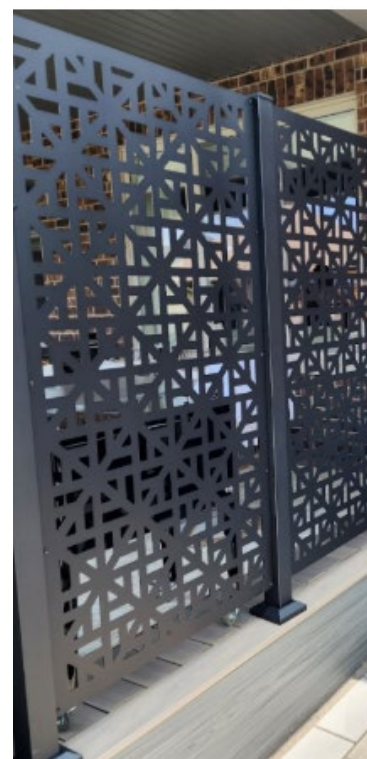
Pedestrian Amenities



Tree Grates



Privacy screens



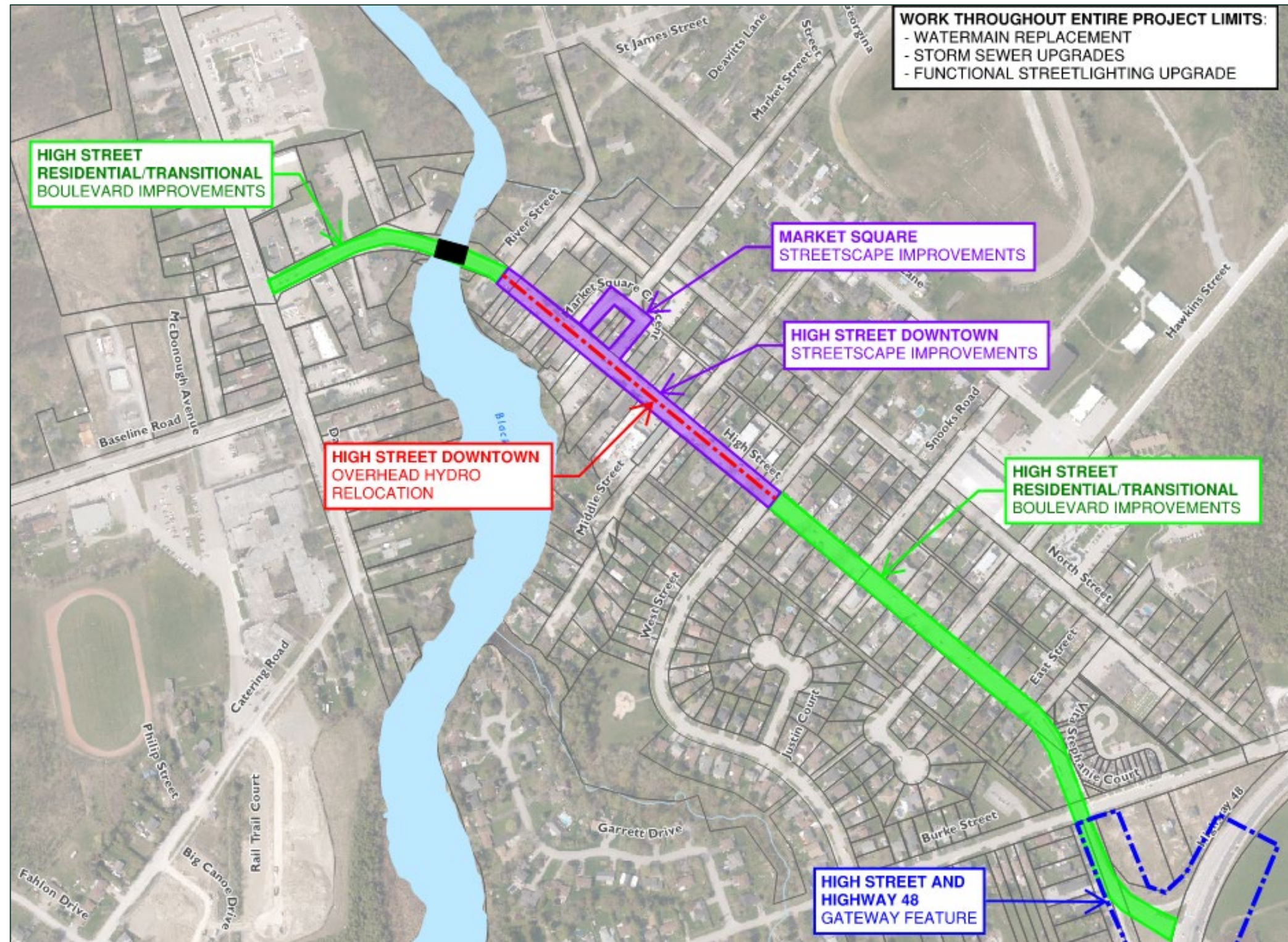
Surface Treatments



Planting Areas

Map of Preliminary Design Options

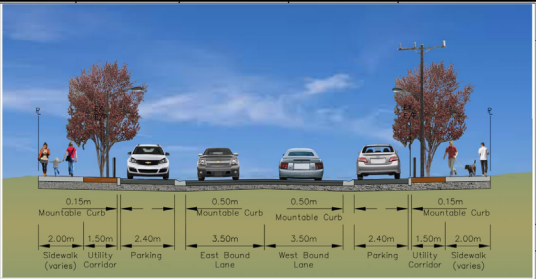
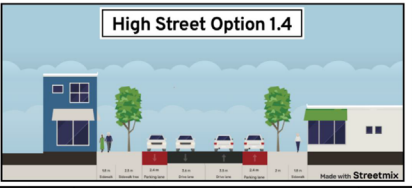
- **Streetscape Revitalization**
 - High Street Downtown Core (BIA), Market Square
- **Road & Boulevard Improvements**
 - Residential Areas outside of Downcore Core (BIA)
- **Hydro Relocation Study**
 - High Street Downtown Core
- **Gateway Feature**
 - Highway 48 / Gateway to High Street



Recommended Streetscape Option - Mountable Curb

OPTION 1.4

- No designated bump out areas
- Mountable curb to maximize parking
- Revised lane configuration to eliminate cycling lanes
- CIMA+'s recommendation to use stakeholder feedback and engineering judgment to refine Streetscape Design Manual concepts to meet the needs of High Street
- Offers the most flexibility to add additional permanent and non-permanent features upon evaluation of parking study



Example Streetscape Projects from Other Municipalities



Downtown Wiarton

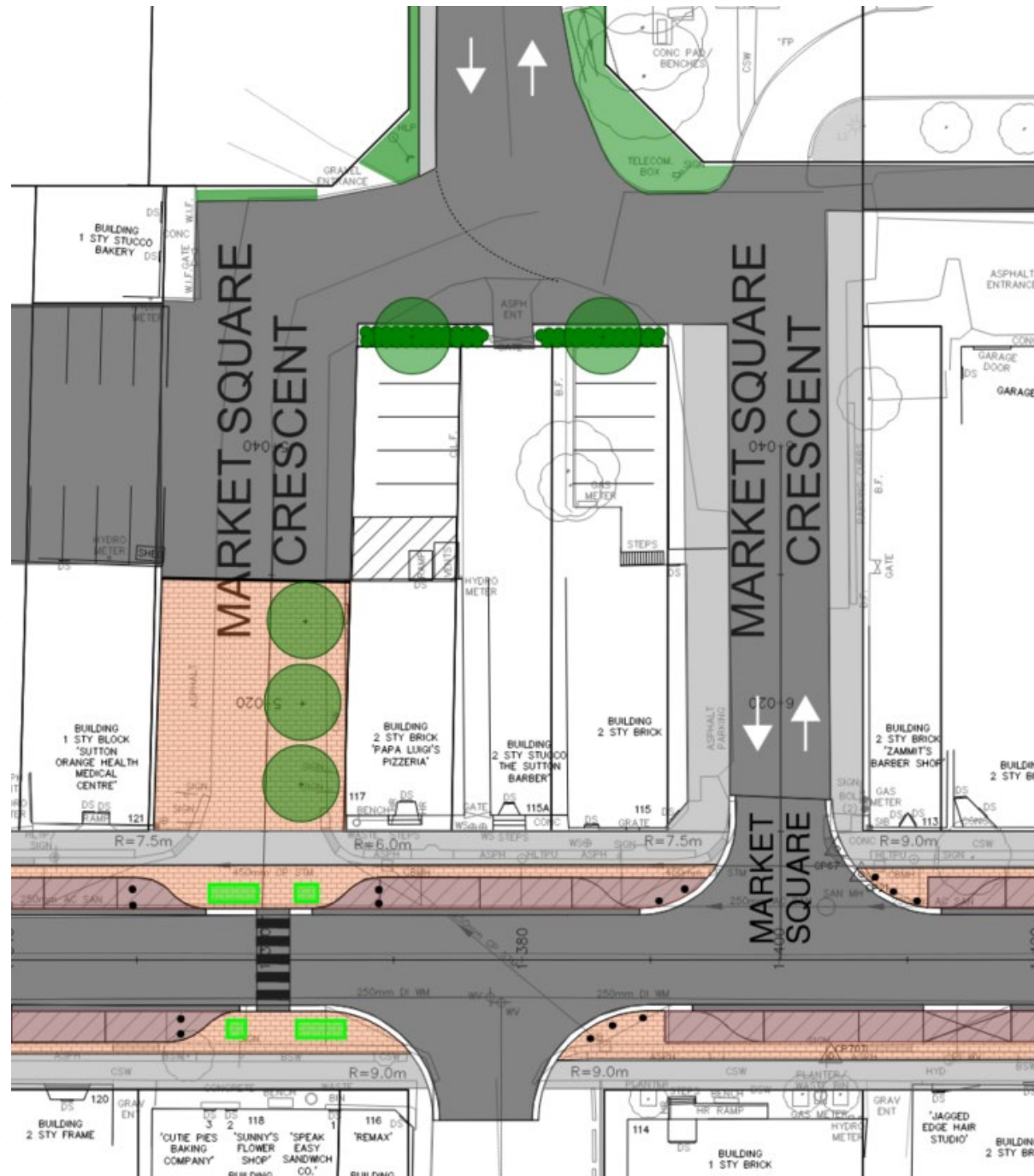


Downtown Barrie



Downtown Belleville

Recommended Market Square Option - Dedicated Pedestrian Space



- Closure of north-west leg of Market Square Crescent to create an appealing public gathering space equipped with street-trees, benches, planters, waste receptacles and an entrance feature.
- Reclaims a valuable area at the heart of the BIA core that was heavily underutilized
- Flexibility to use the area as a relaxing rest area, potential location for additional artistic wall murals, or converted into a pop-up event plaza with temporary market stalls
- Addition of a signaled mid-block pedestrian cross-walk
- Maintain access to all private rear parking lots

Sample image of Lent Lane, Walton Street (Port Hope, ON)



Sample image of a pedestrian space amenities option (bike corral)



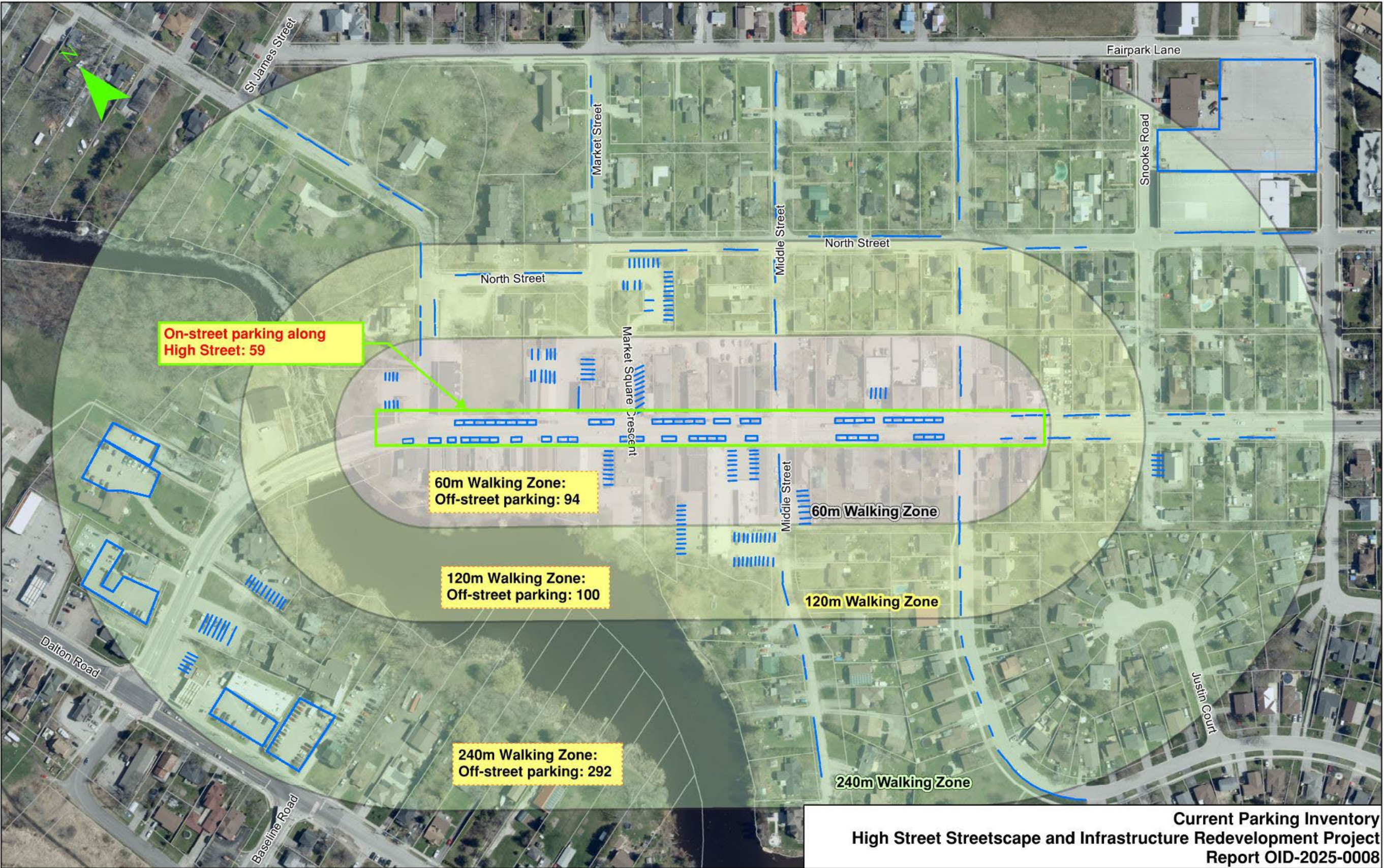
Streetscape Sample Rendering: Market Square



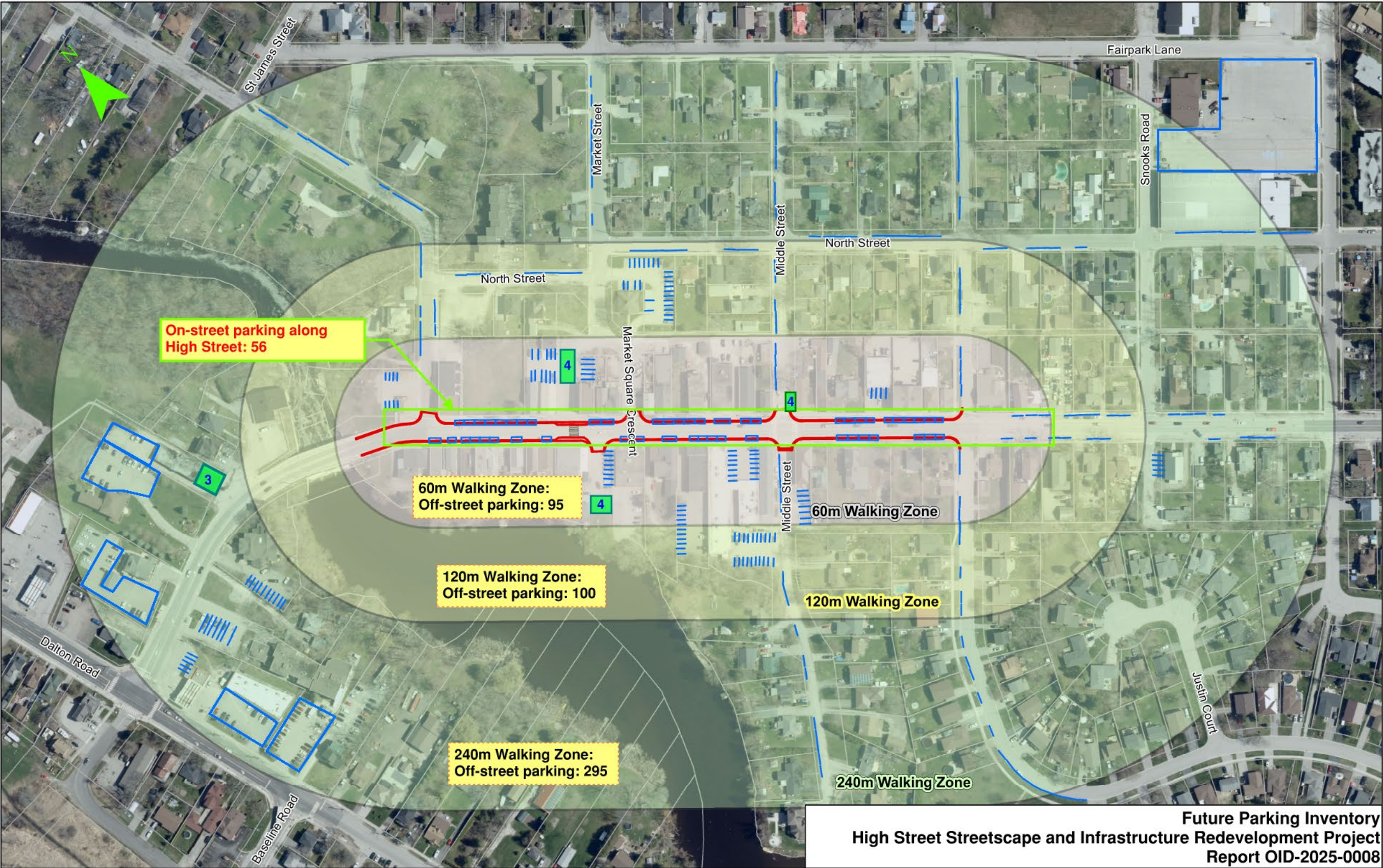
Streetscape Sample Rendering: Market Square (continued)



Current Parking Inventory



Future Proposed Parking



Town Owned Lots for Additional # of Parking



Parking Impact

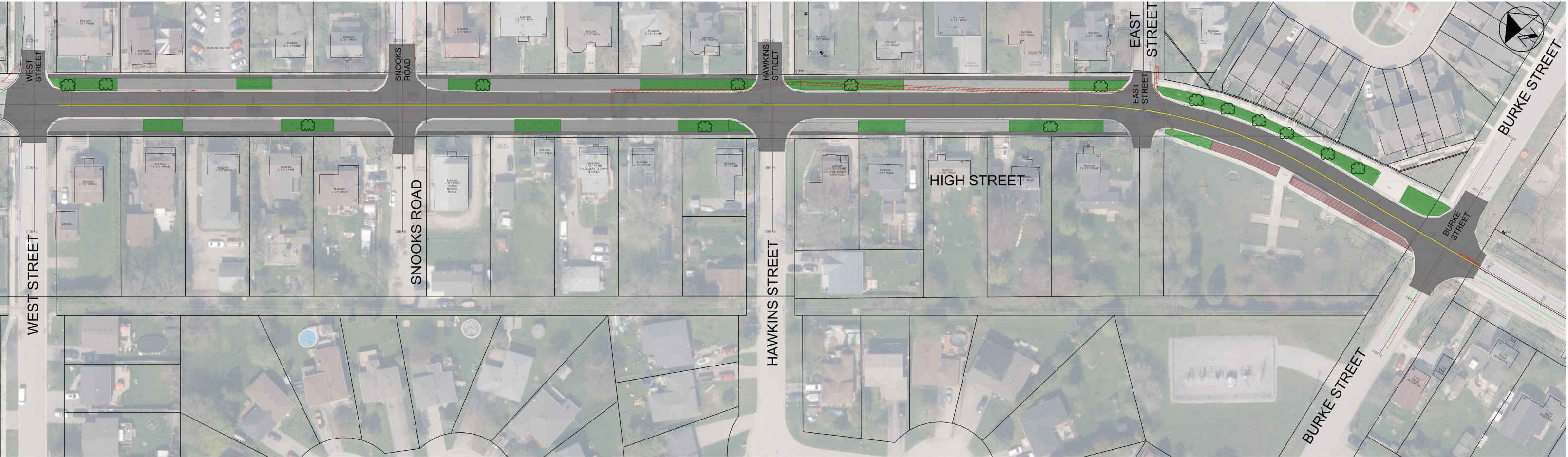
Walking Distance Zones:

- Curbside parking on High St: Ideal for brief stop/quick drop-ins
- 60 m zone: comfortable outdoor walking distance (1 min walk)
- 120m: Suitable for medium-term parking (2-3 min walk)
- 240m: Suitable for long-term parking (5+ min walk)

Impact of recommended streetscaping:

- On-street parking temporarily unavailable (during construction): -59 spots
- On-street parking reduced (long-term): -3 spots
- 60m walking zone parking net increase (long-term): +1 spots
- 120m walking zone parking net increase (long-term): 0 spot
- 240m walking zone parking net increase (long-term): +3 spots

Recommended Boulevard Restoration Option - Outside of Downtown Core



Infrastructure Upgrades - River St. to Dalton Rd.



Recommended Hydro Upgrade Option - Relocate All Underground



**Sample Photo:
Belleville, ON**



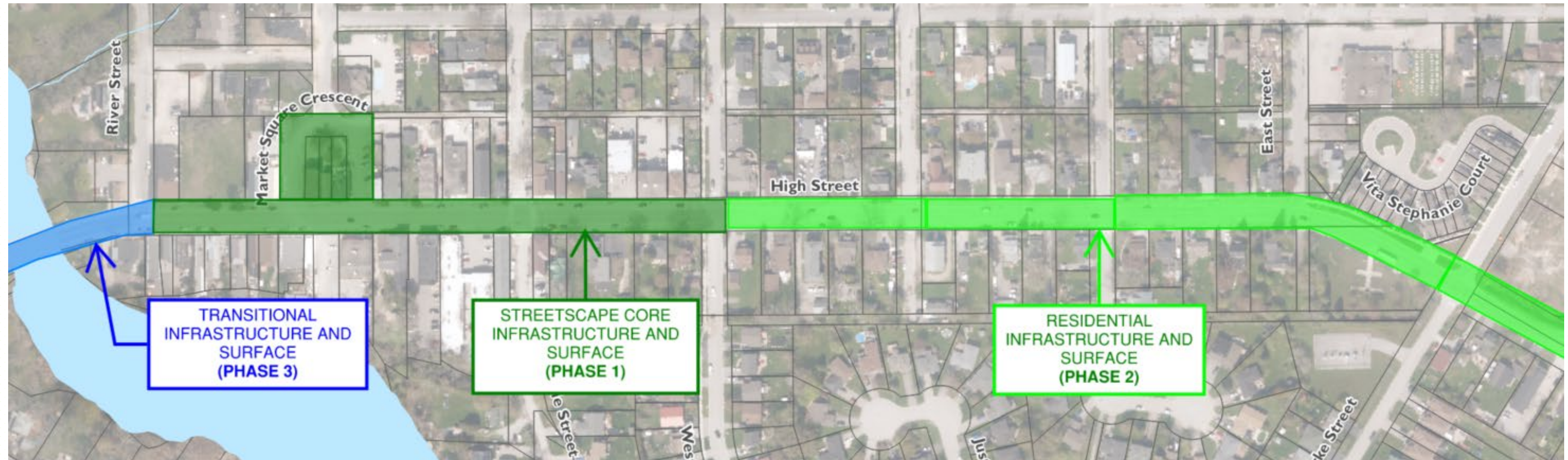
**Example New
Streetlight**

Recommended Gateway Feature Option - Custom Sign



Location for Custom Sign
seen from Highway 48

Construction Phasing Plan



Current Staging Plan Anticipated to Complete Construction

- Original scope of work was expanded to include additional sanitary and watermain upsizing which could result in Phase 2 and/or Phase 3 construction to span into additional season(s).
- Construction planned to start with Phase 1 in 2026, followed by Phases 2 and 3 in 2026 and/or 2027, dependant on final staging plans and resources.
- Phasing and staging to be further evaluated throughout detailed design phase including review of potential acceleration tactics (requirement for multiple crews, extended construction hours, bonuses for completion etc.)

Next Steps

- Finalize Pre-Design Report including infrastructure review and streetscape concepts for High Street.
- Develop Detailed Design:
 - Underground infrastructure
 - Servicing and Lighting
 - Streetscape / Landscape design
 - Entry feature, wayfinding and signage
- Detailed Design (60% to 90%) to Final Design for Tendering
- Construction planned to start spring 2026



Sutton, ON
High St. Pre-Construction



Lindsay, ON
Post-Construction Example

Example Streetscape Projects



Warton, ON



Unionville, ON



Waterloo, ON



Port Hope, ON