



# Town Page

GEORGINA

View the Town Page online at [georgina.ca/TownPage](http://georgina.ca/TownPage)

## COVID-19 vaccinations

A vaccine clinic remains in place at the Georgina Ice Palace and is now open seven days a week from 9:30 a.m. to 7 p.m. To book an appointment or for more information, visit [york.ca/covid19vaccine](http://york.ca/covid19vaccine). If you need assistance, call 1-877-464-9675. Need a ride to a vaccination appointment within the Town of Georgina? YRT's Mobility On-Request ride-sharing service can take you there. Visit [yrt.ca](http://yrt.ca) to learn more.

## Virtual Council Meetings

### Council Meeting

**When:** Wed. Jan. 26 9 a.m.

### Council Meeting

**When:** Wed. Feb. 2 9 a.m.

Council meetings will be broadcast as usual through the Town's live streaming tool. Public participation by phone is available.

A pre-registration form is required to be submitted to the Clerks Division by noon the day before the meeting. The form can be found at [georgina.ca/CouncilMeetings](http://georgina.ca/CouncilMeetings)

## Parking restriction reminders

Did you know that parked cars on Town streets and sidewalks make plowing difficult? Avoid parking on the street or over a sidewalk after a snowfall. Winter parking restrictions are in effect until April 15, meaning no parking on most streets between the hours of 2 a.m. and 7 a.m. For more information, visit [georgina.ca/parking](http://georgina.ca/parking).

## Ice fishing and parking

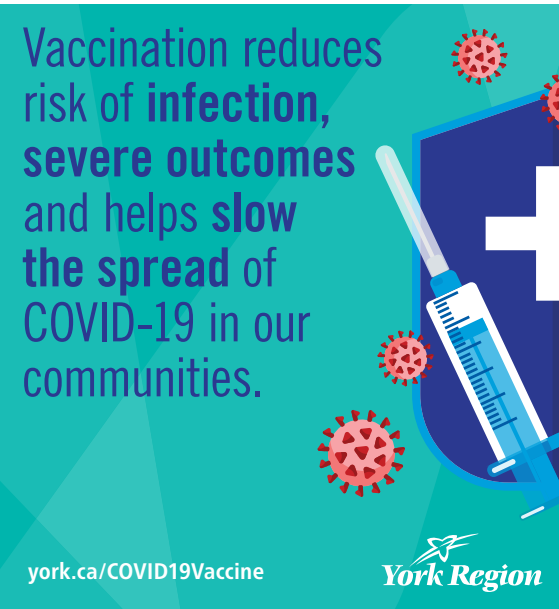
Planning some ice fishing? Remember to check with ice hut operators on ice conditions before heading out. If you are looking for parking, the pay-and-display parking lots at North Gwillimbury, Willow Beach, De la Salle and Jackson's Point Harbour are open, and parking in those lots is free in the winter. While Holmes Point parking is available free to current resident permit parking pass holders, non-resident visitors may be subject a nominal parking fee. There is also parking in south Keswick at Adeline Park and Young's Harbour. There is no parking allowed on most of Lake Drive and the surrounding streets. For more information, visit [georgina.ca/parking](http://georgina.ca/parking)

## Stormwater Pond Safety

Colder temperatures mean stormwater ponds are freezing over. This is a reminder they are not to be used for skating. Stormwater ponds are not intended or designed for recreational use as water levels can change rapidly and create unsafe conditions. This is extremely dangerous and poses many safety risks for residents. For more, visit [georgina.ca/StormwaterPond](http://georgina.ca/StormwaterPond).

## COVID-19 update

The Town is now in the modified step 2 of the province's Roadmap to Reopen. The province has reintroduced public health and workplace safety measures in response to the rapidly spreading COVID-19 variant, Omicron. All Town indoor sport and recreation facilities are now closed to the public, and all indoor in-person programming has been cancelled. Anyone impacted by cancelled programs and third-party rentals will be contacted directly. Each of the three library branches has moved to curbside pickup service. Visit [georginalibrary.ca/ServiceUpdates](http://georginalibrary.ca/ServiceUpdates) for more information. For more information, visit [georgina.ca/COVID-19](http://georgina.ca/COVID-19).



## Every second counts.

Clear snow from your closest fire hydrant.



## Fire and Emergency Services

With winter weather here, Georgina Fire and Emergency Services is reminding residents to keep fire hydrants three feet clear of ice and snow in every direction. In a fire emergency every second counts. You can help by keeping the fire hydrant closest to your house clear of snow so we can connect to it if needed. Also, to protect you and your family, take a walk around the outside of your home and make sure the intake and exhaust vents for furnaces and heating appliances are free of ice, snow, debris. This will prevent the buildup of deadly carbon monoxide in your home. For more fire safety information, visit [georgina.ca/fire](http://georgina.ca/fire).

## The ROC

The ROC is now open seven days a week. Two-hour tickets must be purchased online in order to visit. Season pass holders will not be required to reserve tickets online, however, all attendees (including season pass holders) will be required to check in at the outdoor ticket office window upon arrival. Capacity is reduced and masks must be worn at all times. The chalet is open for washroom use and there is a limited cafeteria takeout service only. There is no dine-in or warming area within the chalet. For more information, visit [georginaroc.ca](http://georginaroc.ca).



## Pefferlaw Ice Pad

The Pefferlaw Ice Pad (PIP) is open for the season. Registration is not required and there is no admission charge. COVID-19 procedures and protocols are in place. Masks must be worn when physical distancing cannot be maintained such as lacing up in the skate area. Visit [georgina.ca/skating](http://georgina.ca/skating) for more information.

## Career opportunities

Take a look at what Georgina has to offer and join our talented team. We are currently recruiting for:

- Animal Shelter Supervisor
- Human Resources Business Partner
- Vaccination Clinic Support Staff
- Procurement Advisor

Visit [georgina.ca/careers](http://georgina.ca/careers) for more information.

# Winter maintenance and snow removal

Winter weather is here and Georgina is ready. The Town of Georgina provides residents with a high level of snow-removal services. Whether it's reducing snow and ice on roads or clearing it from paths and sidewalks, the Town is diligent in ensuring residents and visitors can travel safely.

## Winter Maintenance Event

As a result of a major winter storm, the Town may declare a Winter Maintenance Event which requires all parked vehicles to be removed from Town roads until the event is over. Residents are asked to follow our channels – social media, Town Page, electronic signs and [georgina.ca/snow](http://georgina.ca/snow) – to stay up to date throughout the winter.

## Significant Weather Event

A municipality may declare a Significant Weather Event when a weather hazard, either forecast or occurring, has the potential to pose a significant danger to users of the roadways in which they have authority. This declaration extends the maximum timelines for municipalities to meet their winter maintenance service levels.

## Windrow clearing pilot program



The Town has started a pilot program to provide driveway windrow clearing to residents who are aged 65 or older, or who require additional assistance. A windrow is the pile of snow at the end of the driveway created by the plows when they clear the road. The application process is now open to eligible residents. Visit [georgina.ca/snow](http://georgina.ca/snow) to apply.

### Who is eligible?

- All occupants of a household must be over 65 years of age, or,
- Under 65 years of age and all occupants of the address over the age of 12 are physically unable to remove snow. To qualify, residents must provide a formal doctor's note, disability certificate or Functional Abilities Form (FAF) signed by a medical practitioner identifying they are unable to shovel snow

The program is scheduled to begin on Feb. 1, 2022.



## Priority routes

Priority snow clearing routes including major thoroughfares, bus and transit routes, and access to fire stations, are always maintained first and may receive multiple treatments during a snow event. Once these priority roads have been cleared, secondary roads will follow.

**Be nice. Don't throw snow or ice on the road when clearing your driveway or sidewalk** – It is against the law, contributes to unsafe driving and walking conditions, and increases the cost of providing winter road maintenance.

## No parking!

Parked cars make plowing difficult and sometimes impossible. To help the Town keep roads clear for traffic, parking is not permitted on most streets from 2 a.m. to 7 a.m., Nov. 15 through April 15, unless otherwise posted.

## Materials - What we're using on your roads

The Town uses both sand and treated salt for snow and ice control throughout Georgina during the winter months. Winter sand is a mixture of nine parts sand to one part Thawrox® treated salt. Thawrox® is Highway Course Rock Salt treated with additives to lower the usable temperature on a municipal highway. By lowering the usable temperature, the material can be utilized on a wider range of winter events throughout the winter period. The location, traffic volume, road classification and roadside environment all factor into what material is used on a route.

**Winter Materials Trial** – The Council-approved pilot program has been expanded and will continue this winter where 100 per cent salt is applied on selected road segments during winter maintenance activities. This differs from past practice of using mixed sand, and results in less overall material applied to the road surface. This program offers potential financial, operational and environmental benefits utilizing best practices within local environments throughout the Town.