



Keswick Santa Claus Parade Route Change

Presented by:
The Georgina Kinsmen





Rationale

Recommendations set forth by the YRP Major Incident Management Unit suggest that a change to the current Parade Route will offer the following benefits:

- Reduced Points of Entry
- Shorter Route Distance
- Elimination of Hill Grade
- Allow for EMS Access Route

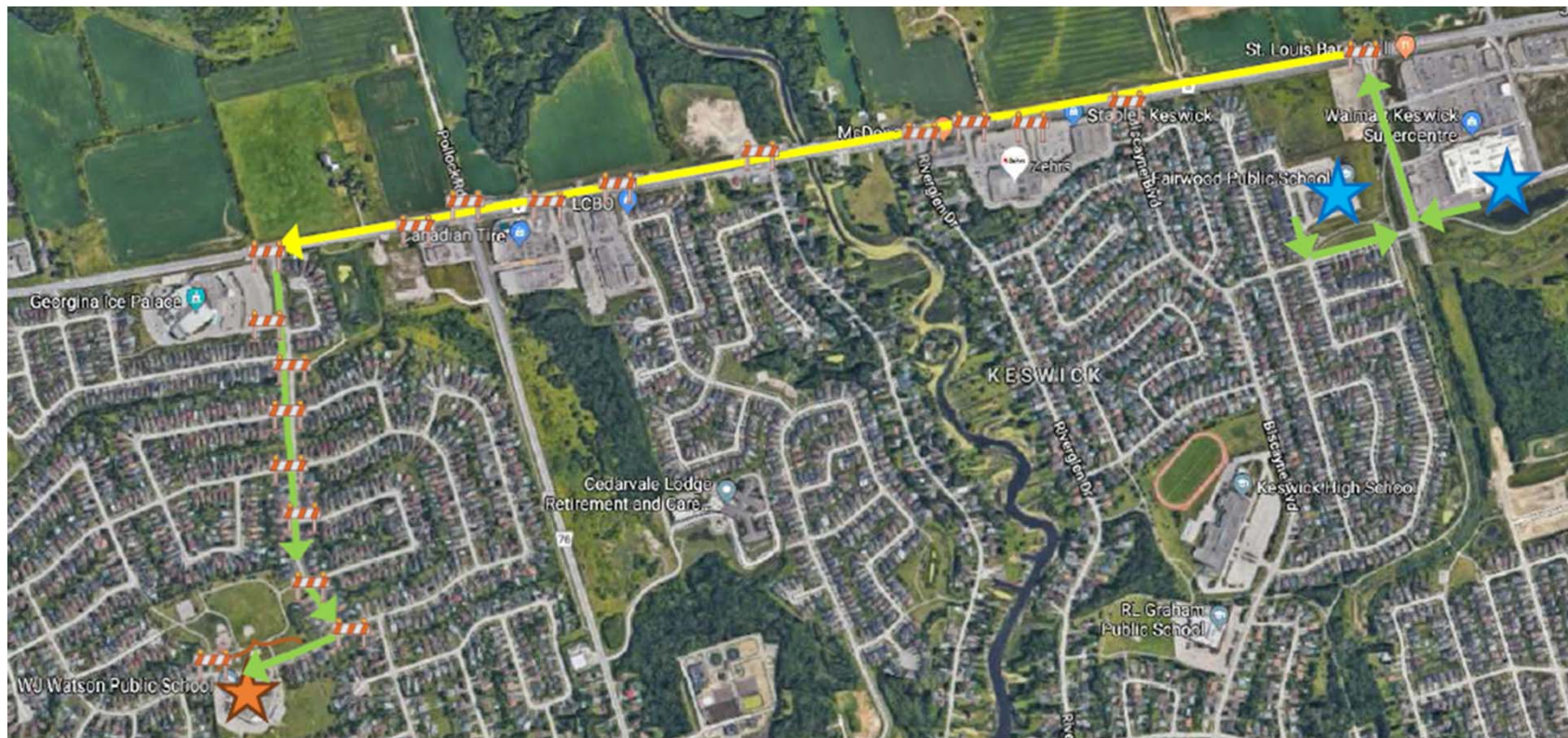




New Parade Route

Legend

- Proposed Parade Route
- Load-In Load Out Route
- Detour Route
- 🚧 Barricades
- ★ Staging Area
- ★ Load Out Area





Thank you!

