

Your 2018 Final Tax Bill is enclosed. This bill is payable in two installments, the first on July 27, 2018 and the second on September 27, 2018.

The Town of Georgina issues and collects your property tax billing, including those levied by the Town of Georgina, Region of York and Ministry of Education. The calculation of your property tax amount is determined by multiplying the current value assessment of your property by the applicable tax rate. We have provided within this brochure all 2018 tax rates for the Town of Georgina, Region of York and Ministry of Education.

The following graph illustrates the distribution of \$1 of residential taxes between the Town, Region and Ministry of Education.

Fig. 1: Breakdown of \$1 of Residential Taxes

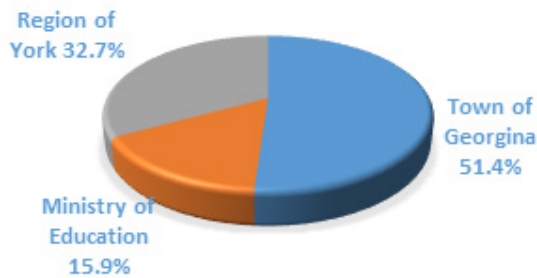
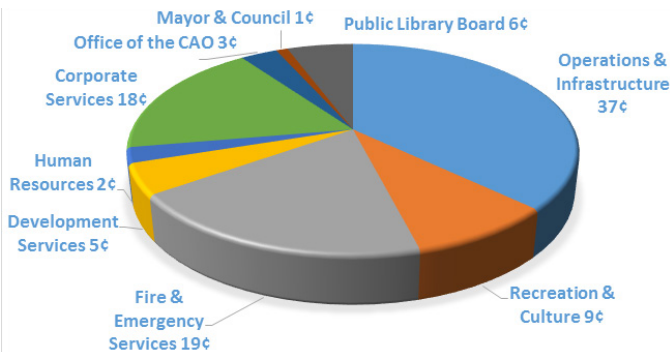


Fig. 2: Where Your Tax Dollars are Spent



**Town of Georgina**  
**Tax, Revenue and Customer Service**  
**905-476-4301**

# Useful Numbers

**Margaret Quirk, Mayor**  
**home: 905-722-4250**  
**mquirk@georgina.ca**

**Naomi Davison, Regional Councillor**  
**cell: 289-716-0196**  
**ndavison@georgina.ca**

**Charlene Biggerstaff, Ward 1 Councillor**  
**cell: 289-716-9439**  
**cbiggerstaff@georgina.ca**

**Dan Fellini, Ward 2 Councillor**  
**cell: 289-716-6771**  
**dfellini@georgina.ca**

**Dave Neeson, Ward 3 Councillor**  
**cell: 289-716-6772**  
**dneeson@georgina.ca**

**Frank A. Sebo, Ward 4 Councillor**  
**cell: 905-716-7397**  
**fsebo@georgina.ca**

**Dave Harding, Ward 5 Councillor**  
**cell: 905-716-4607**  
**dharding@georgina.ca**

**Emergency Services**  
**911**

**Garbage Collection**  
**1-866-421-5625**

**Snow Removal/Roads**  
**905-476-4301 ext. 2232/2443**

**Recreation Programs & Facility Bookings**  
**905-476-4301 ext. 2354**

**Planning & Building Permits**  
**905-476-4301 ext. 2252/2263**

**Animal Shelter**  
**1-800-898-8606**

**Economic Development & Tourism**  
**905-476-4301 ext. 2300/2312**

# 2018 Final Tax Billing Information



**georgina.ca**

## 2018 Town of Georgina Budget Highlights

Georgina Town Council approved its 2018 Tax Rates on May 16, 2018. When combined with the Regional and Education tax increases, the overall impact results in an increase of 2.3% or \$85.42 for the average home with a current value assessment of \$352,425. Georgina's 2018 operating budget is \$76.8 million, including contributions to reserves. The 2018 capital budget is \$27.9 million, which includes carry forward projects of \$11.6 million. Funding sources for Georgina's budget are derived by revenues generated by user fees, permits and licences, Federal & Provincial grants, Federal Gas Tax, development charges and property taxes.

### Highlights of the 2018 Operating Budget include:

- An expanded roadside ditching program will proactively mitigate any possible flooding or roadside drainage issues.
- Public safety is at the forefront with increased outreach for fire safety education, heavy hydraulic auto extrication equipment and a new aerial fire truck. Construction will also get underway on Pefferlaw's new fire hall which will incorporate the adjacent Cooke's United Church.
- Happy 200th birthday Georgina! Georgina will mark this milestone with historical displays at Town facilities, promotional swag, enhancements to the Canada Day Celebrations, as well as other events.
- Additional eLearning resources will be available at the Library providing a web-based online video platform where residents can access thousands of expert tutorials.
- Some popular local roads will be going under the knife. Road improvements are scheduled for Duclos Point Road, McCowan Road, Smith Boulevard and Church Street between Metro Road and Shorecrest Road.
- A traffic calming pilot project will be launched for Lake Drive by Willow Beach and De La Salle Beach. Four mobile speed radar signs will be also moved throughout the community aimed at slowing speeders down.
- Phase 2 and 3 at The Link will move forward with base building requirements. Several potential tenants have expressed interest in renting the space once complete.

## Property Tax Payment Options

Payments can be made by telephone/internet banking, at any bank or in person by cash, cheque or direct debit at the Civic Centre.

### Monthly Pre-Authorized Payment Plan Information:

Paying your property taxes through the pre-authorized payment plan is a very convenient method for many people. There is no worry about paying the installments by the due date and it simplifies monthly budgeting.

**Plan Highlights:** We withdraw 12 payments per year. Payments are made on the 1st or the 15th banking day of the month. There is no service charge for participating in the plan. You can sign up at any time during the year. Your monthly payment will change twice a year in January and July. From January to June, we withdraw six equal payments based on your previous year's taxes. From July to December, we withdraw 6 equal amounts to pay the balance of the taxes owing. If your taxes are not up to date, you can still sign up for the plan. We will calculate a payment to pay your arrears plus the current taxes. Penalty and interest is added to your account until it is current.

Installment plan payments will be taken on the installment due dates (four times per year).

Property Class	Town of Georgina	Region of York	Ministry of Education	Total Tax Rate	Code
Residential & Farm	0.550820%	0.350606%	0.170000%	1.071426%	RT
Multi-Residential	0.550820%	0.350606%	0.170000%	1.071426%	MT
Commercial	0.678776%	0.432052%	0.966480%	2.077308%	CT/ST/GT
Vacant Commercial	0.475143%	0.302436%	0.676536%	1.454115%	CU/SU
Excess Commercial	0.475143%	0.302436%	0.676536%	1.454115%	CX
Industrial	0.824743%	0.524962%	1.090000%	2.439705%	IT/LT
Vacant Industrial	0.536083%	0.341225%	0.708500%	1.585808%	IU/LU
Excess Industrial	0.536083%	0.341225%	0.708500%	1.585808%	IX
Pipelines	0.506204%	0.322207%	1.340000%	2.168411%	PT
Farmland	0.137705%	0.087651%	0.042500%	0.267856%	FT
Managed Forest	0.137705%	0.087651%	0.042500%	0.267856%	TT

### Common Assessment Codes (shown under assessment section on tax bill)

RT	P	Residential or Farm, Taxable English Public School Board
RT	A	Residential or Farm, Taxable French Public School Board
RT	S	Residential or Farm, Taxable English Separate School Board
RT	C	Residential or Farm, Taxable French Separate School Board
FT	P	Farmlands, Taxable English Public School Board
FT	S	Farmlands, Taxable English Separate School Board
MT	P	Multi-Residential, Taxable, English Public School Board
MT	S	Multi-Residential, English Separate School Board

*For 2018, all properties in Ontario are in their second year of reassessment. Assessment increases are phased-in over four years at approximately 25% of the increase each year. For the 2018 tax year, your property assessment represents the phased-in value for 2018 taxation. The Municipal Property Assessment Corporation (MPAC) is responsible for determining all property values in Ontario. To inquire about your assessment value, please contact MPAC at 1-866-296-6722.*