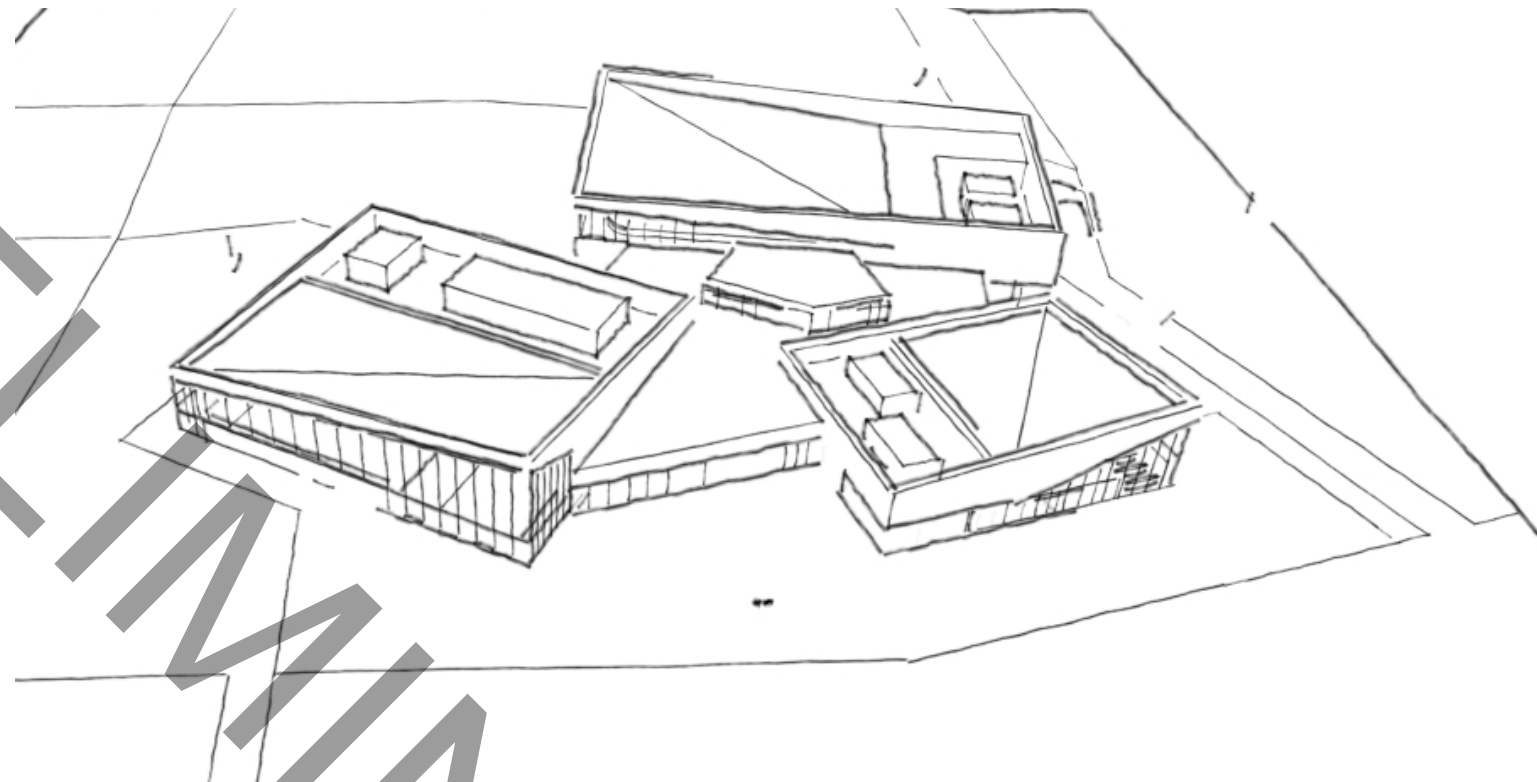




## Preliminary Massing Sketches

The big moves:

- Three distinct masses
- Sloped roof
- Double-height central gathering space
- Mechanical distributed at each program volume
- Dynamic elevation from Woodbine and the new neighbourhood road
- Second storey engages the landscape



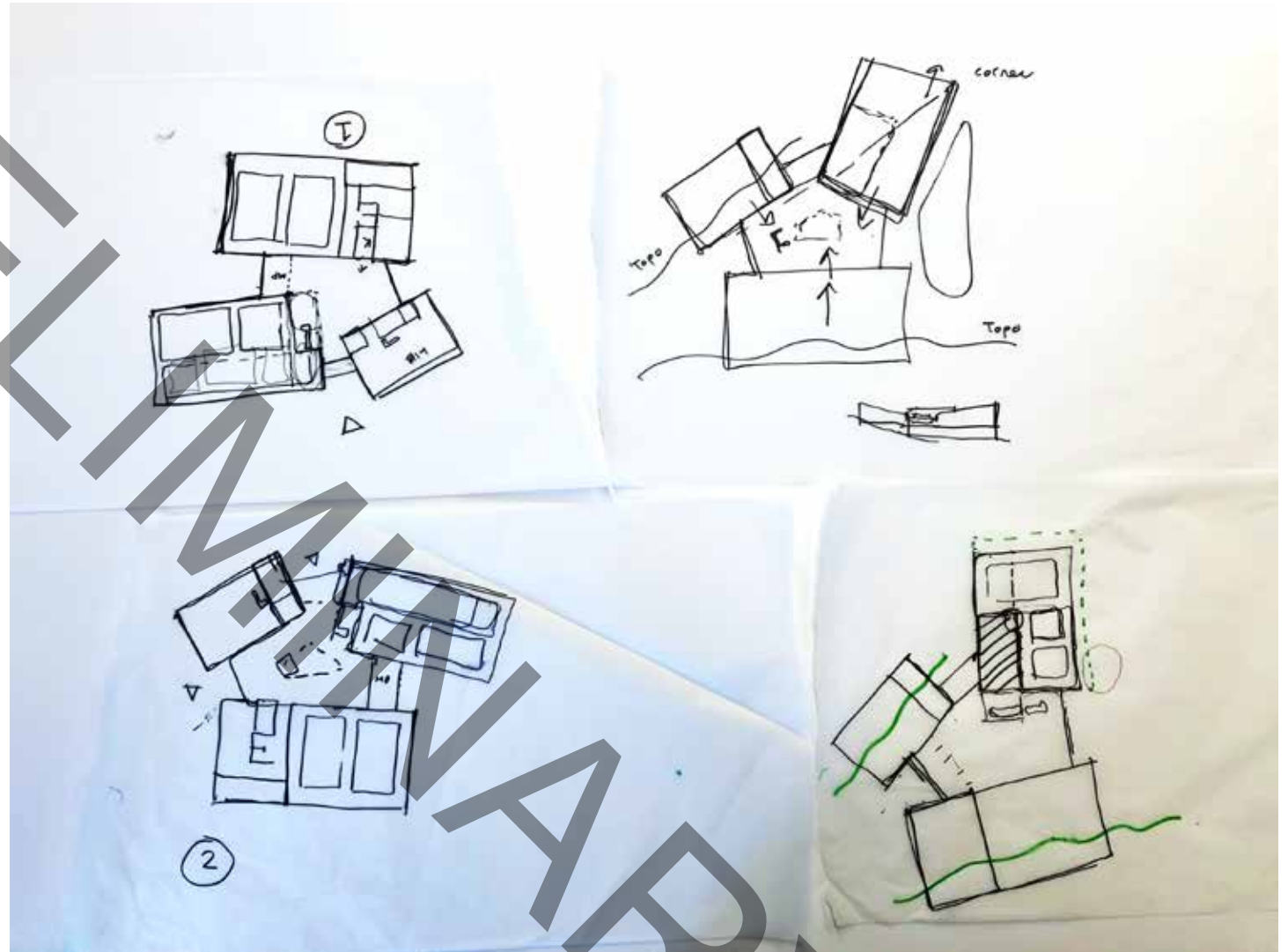
## Site Positioning Analysis

Before proceeding we looked at orientation on the site

Rotate the complex

Rotate the components

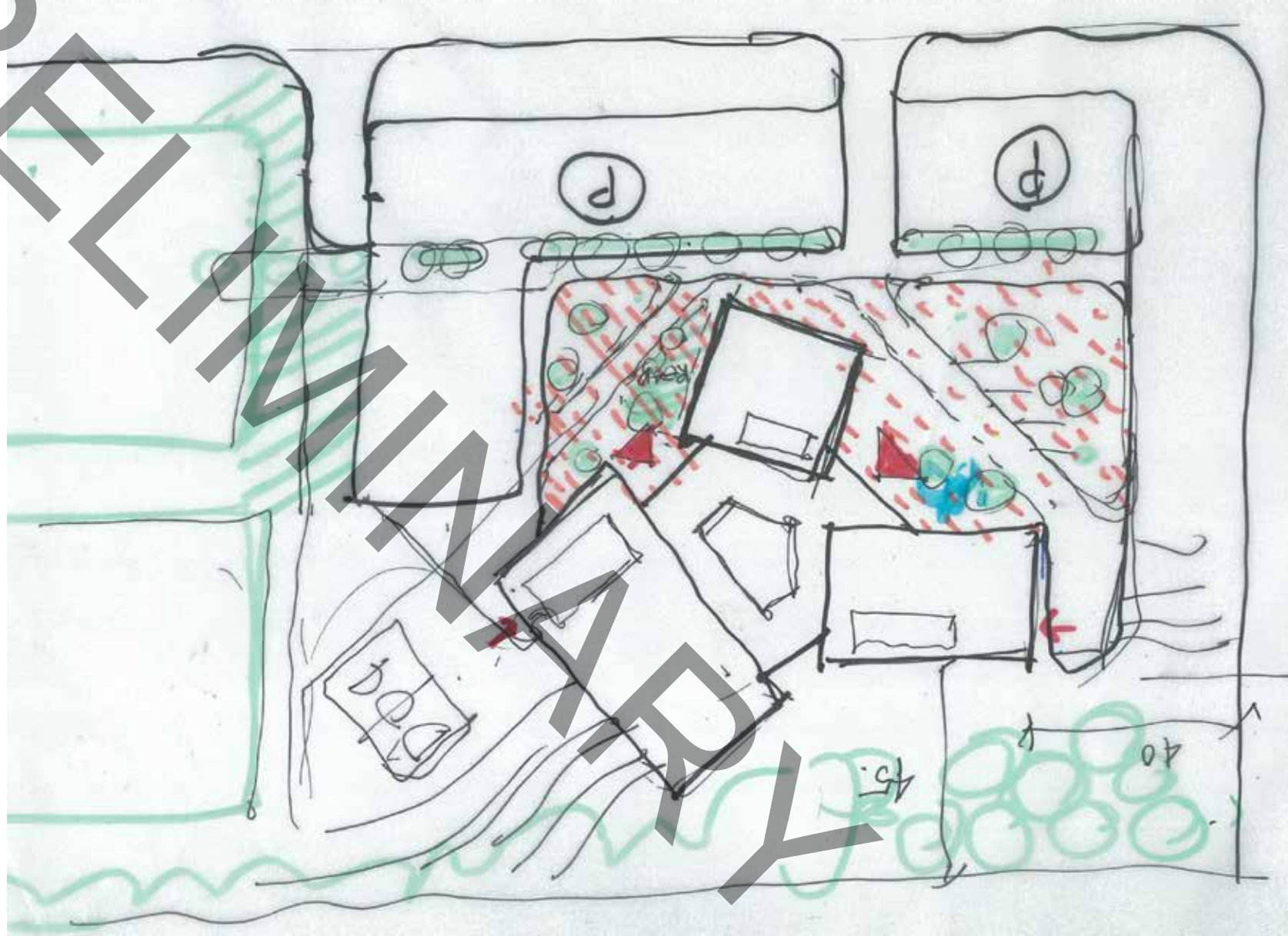
Objective to find a better relationship to the parking, topography, wind and sun orientation





## Site Sketch

- Parking, plaza and community-centered program along the new neighbourhood road follows an orthogonal urban grid
- The building plan nestles into the landscape and takes on an informal or more organic configuration
- A change in paving defines the plaza and offers parking as well as a venue for community events



# Site Plan

GARRETT STYLES DRIVE

Parking

MURC Site

URBAN PLAZA

READING GARDEN

Library

ENTRY PLAZA

ENTRY PLAZA

SPRAY FEATURE

SERVICE

OPEN GREEN

Aquatics

SERVICE

Gym

COURTYARD

NATURALIZED MEADOW

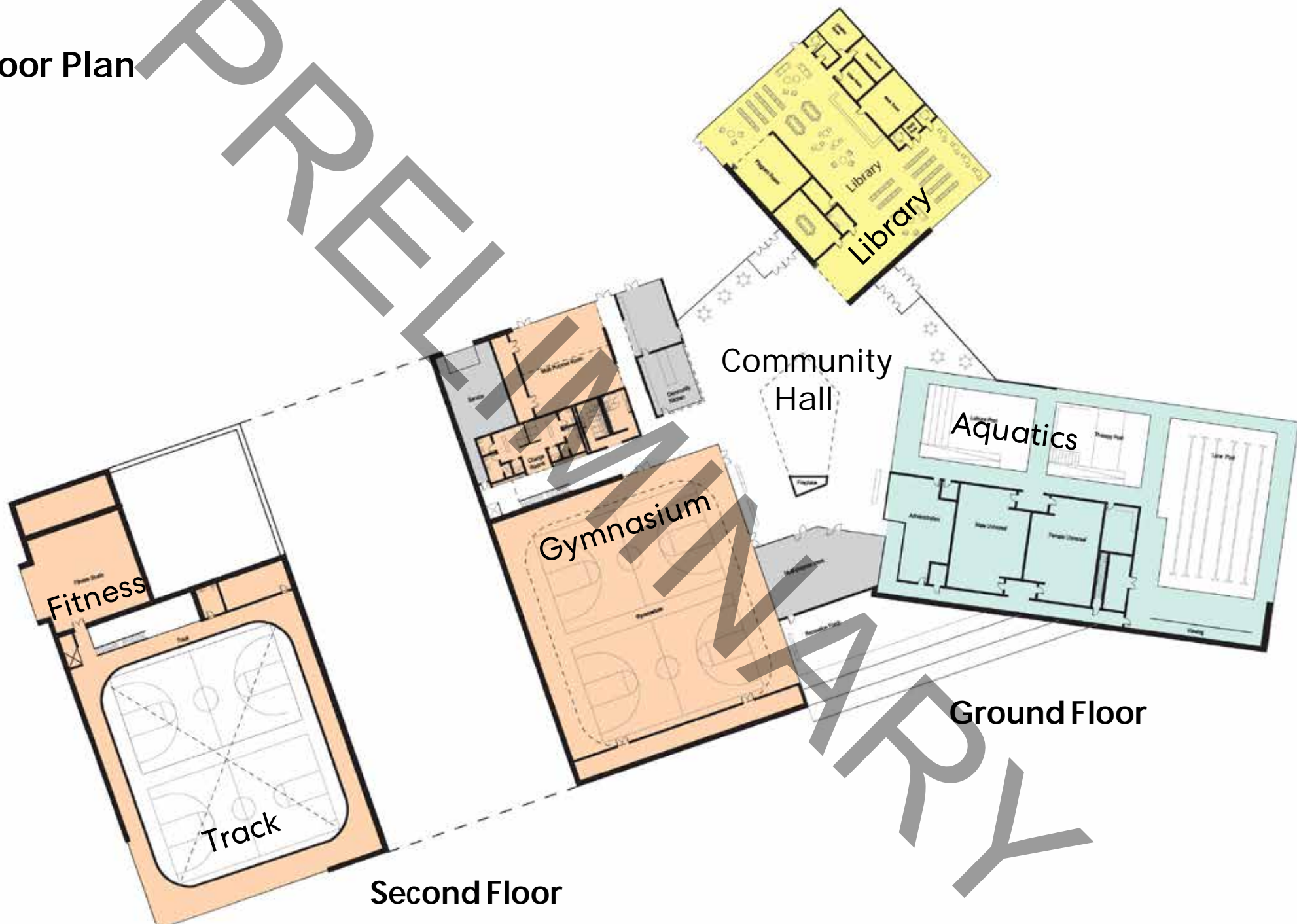
Undeveloped area for future expansion

WOODBINE AVENUE

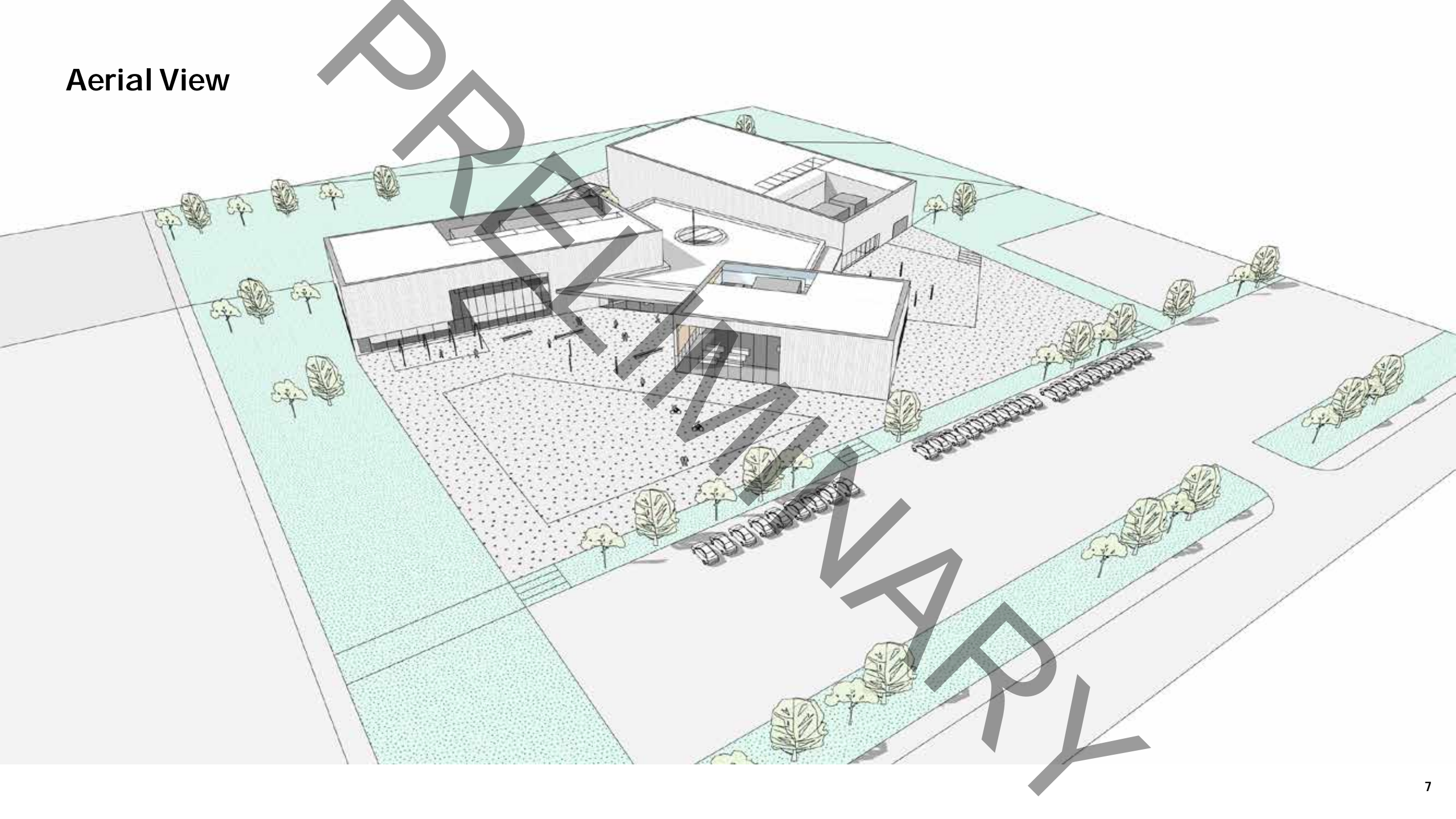
STREET "100"



Revised Floor Plan



Aerial View





Aerial View

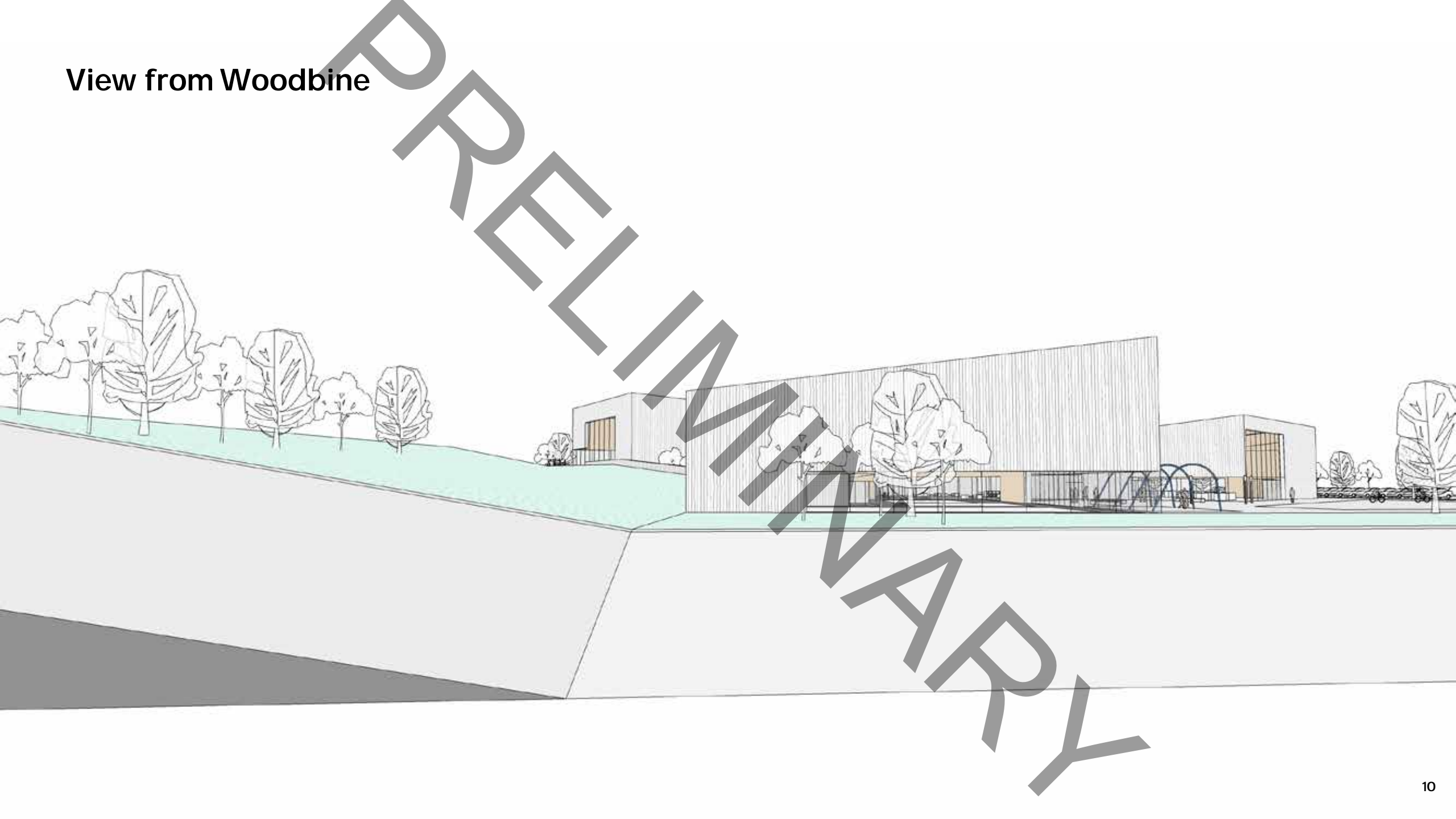




Entry

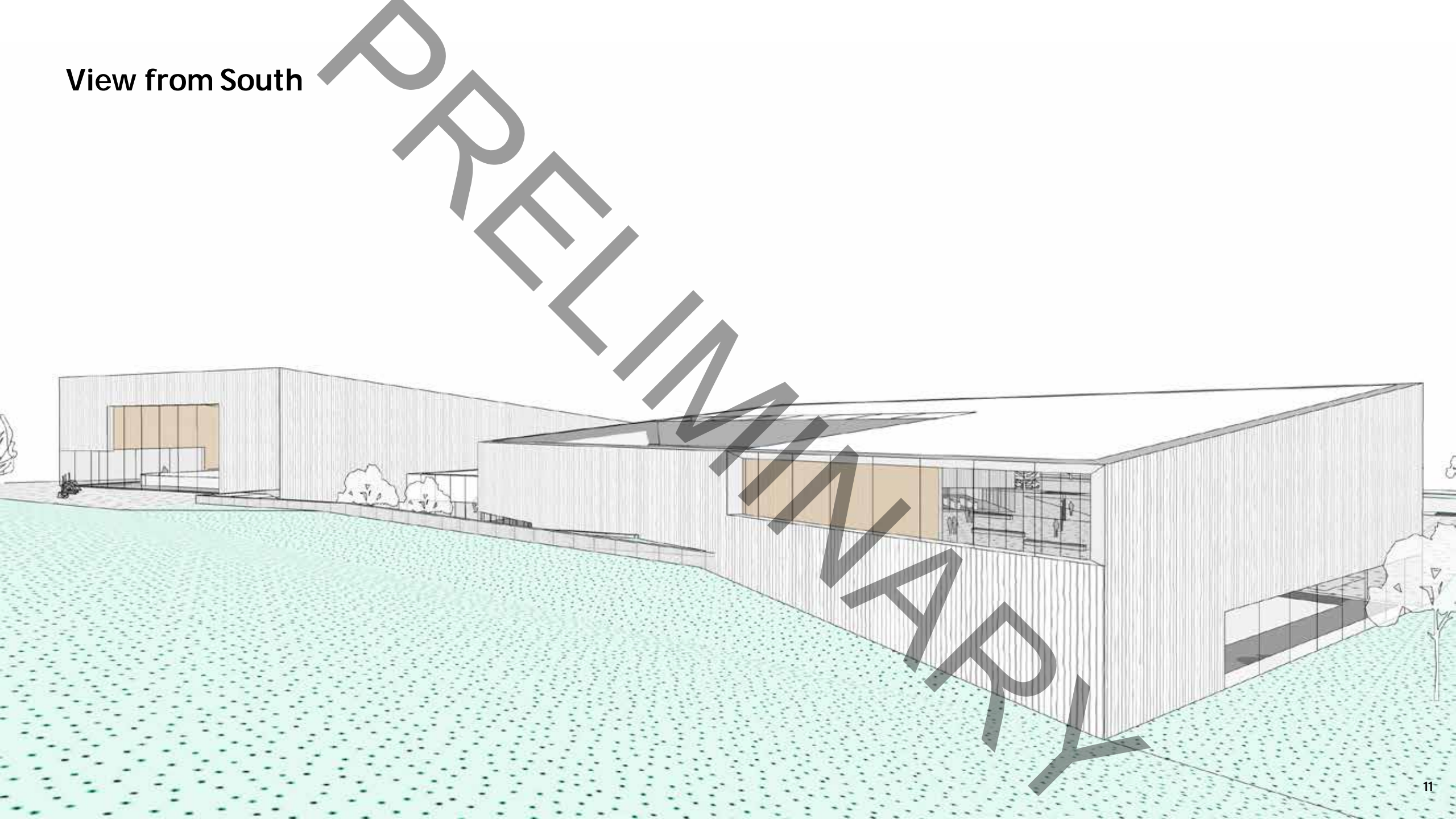


View from Woodbine

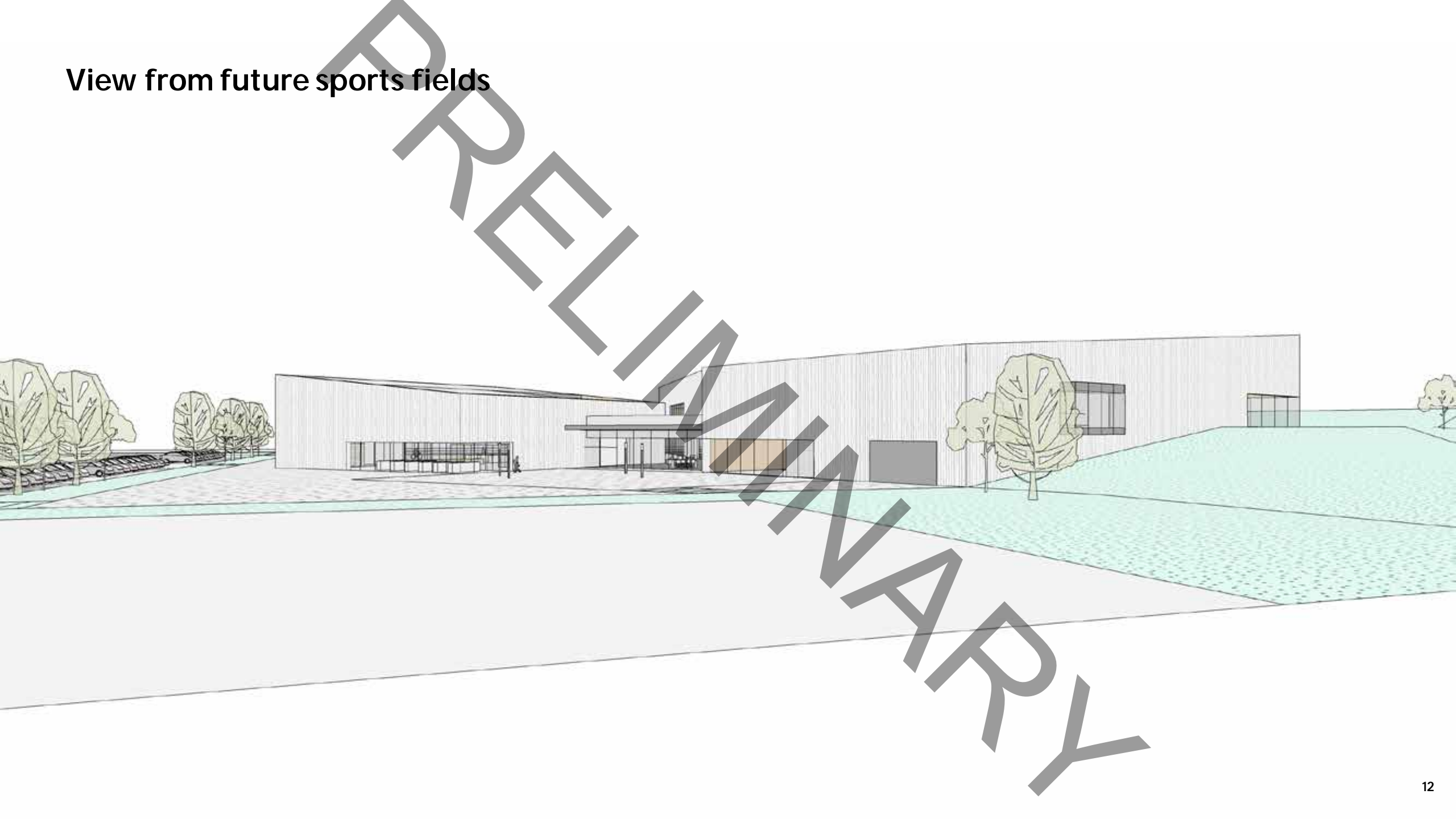




View from South

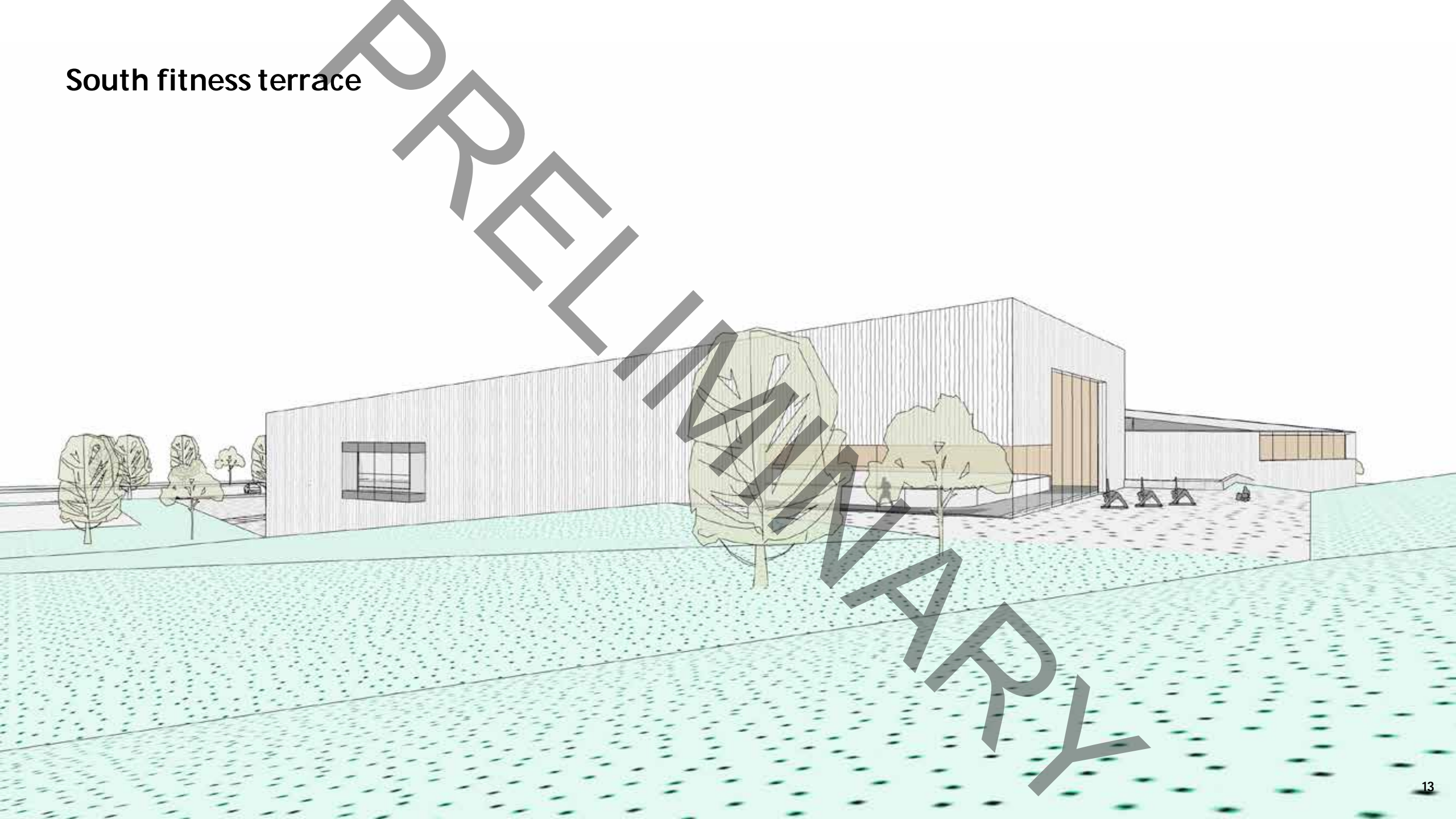


View from future sports fields





South fitness terrace



South fitness terrace

