

# Jackson's Point Harbourfront

## Redevelopment Plan

...Towards a Preferred Plan

### Option 1a

No Realignment of Property Boundaries  
With Boat Launch

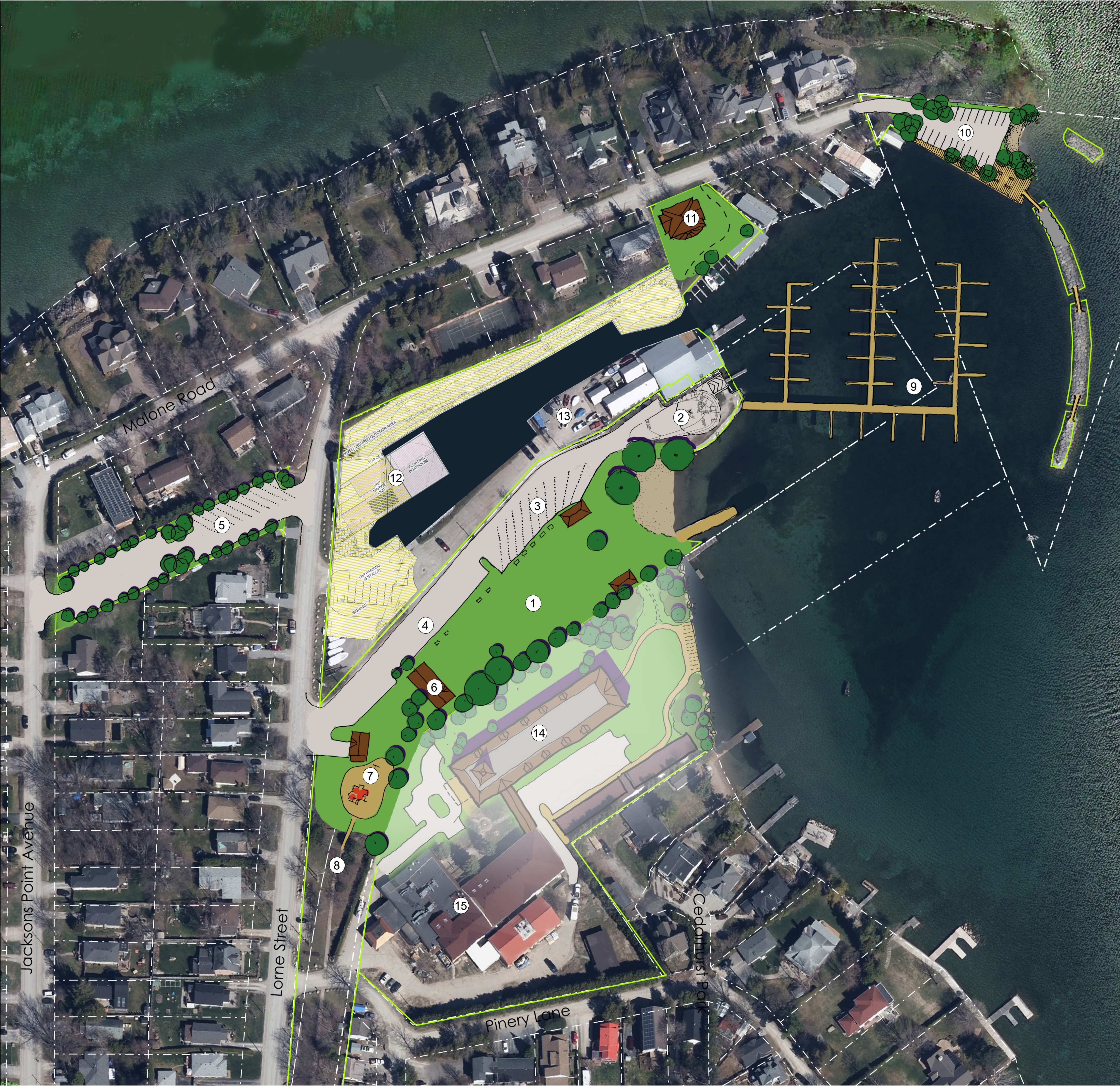
93m of Public Water's Edge (at Lake)

August 10, 2017

#### Features of Option 1a

- ① Bonnie Park maintained in its current location
- ② Single lane boat launch (20' or less)
- ③ Parking lot reconfigured to accommodate trailer parking
- ④ Balance of public parking in Lorne Park maintained
- ⑤ Use of ROW lands for public parking and/or trailer parking
- ⑥ Upgraded washrooms for public and boating
- ⑦ Playground can be maintained in existing location or moved closer to beach if desired
- ⑧ Lorne Park trail connection maintained
- ⑨ Expanded Town slips in harbour - requires partnership due to water lot ownerships
- ⑩ Enhanced amenities at Malone Wharf
  - maintain dive access
  - naturalized areas
  - potential seasonal bridges linking breakwaters
  - observation area
  - platform along wharf edge for fishing
- ⑪ Low density residential on Malone Road
- ⑫ York Regional Police controlled lands with no public access
- ⑬ Likely limited development potential on MSR/Lalu lands, could be fenced for safety reasons
- ⑭ Concept illustrating Ramada's development objectives of 60 unit residential/hotel building
- ⑮ Existing hotel remains

Note proximity of boat launch to beach could result in the removal of one or more mature trees, require fencing for safety, and result in loss of some slips.





# Jackson's Point Harbourfront

## Redevelopment Plan

...Towards a Preferred Plan

### Option 1b

No Realignment of Property Boundaries

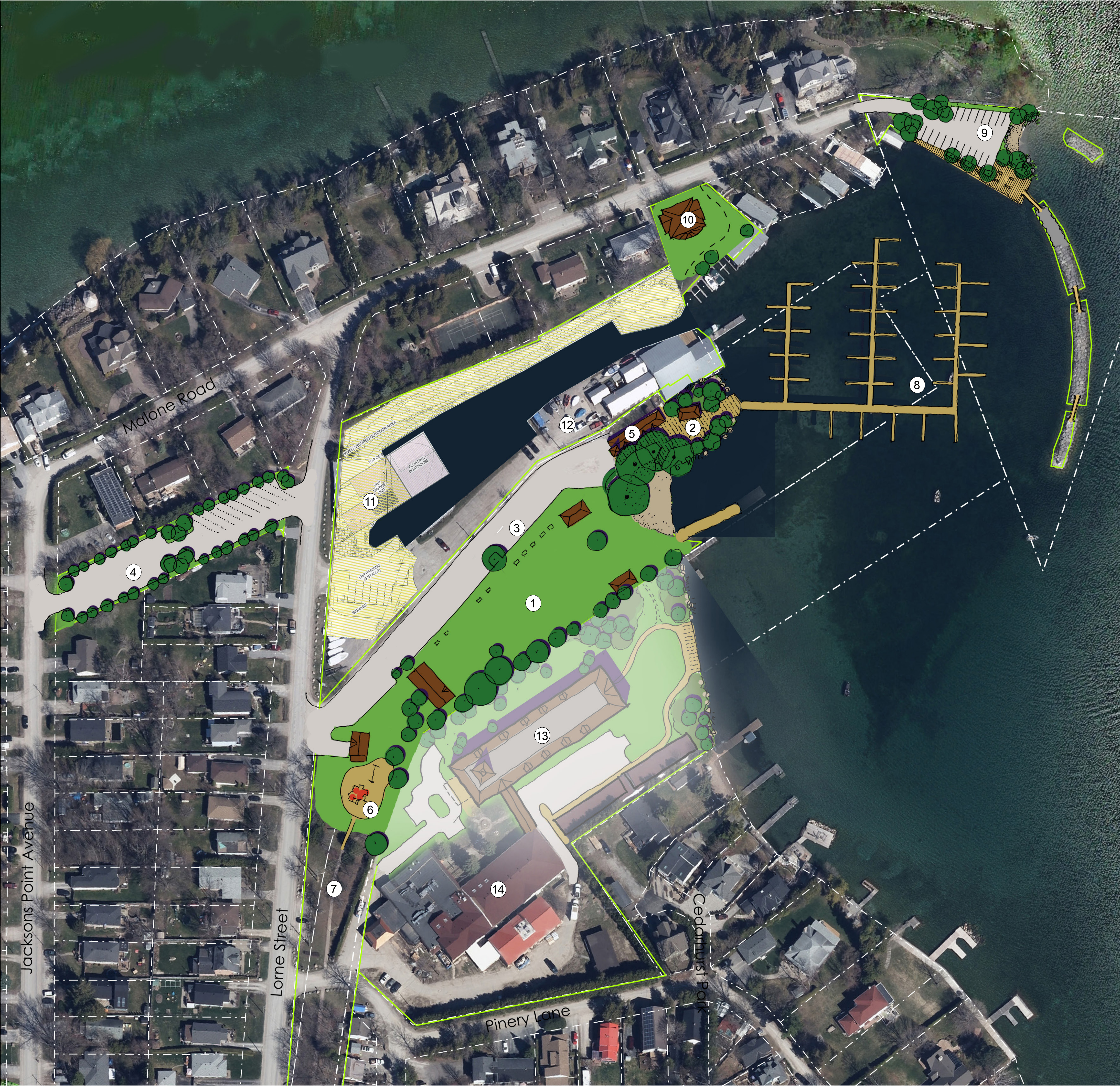
No Boat Launch

93m of Public Water's Edge (at Lake)

August 10, 2017

#### Features of Option 1b

- ① Bonnie Park maintained in its current location
- ② Public gathering area  
naturalized areas  
observation area  
opportunity for pavilions/pop-up retail
- ③ Public parking in Lorne Park maintained
- ④ Use of ROW lands for public parking
- ⑤ New building incorporating washrooms for public and boating, marina office, potential retail
- ⑥ Playground can be maintained in existing location or moved closer to beach if desired
- ⑦ Lorne Park trail connection maintained
- ⑧ Expanded Town slips in harbour - requires partnership due to water lot ownerships
- ⑨ Enhanced amenities at Malone Wharf  
maintain dive access  
naturalized areas  
potential seasonal bridges linking breakwaters  
observation area  
platform along wharf edge for fishing
- ⑩ Low density residential on Malone Road
- ⑪ York Regional Police controlled lands with no public access
- ⑫ Likely limited development potential on MSR/Lalu lands, could be fenced for safety reasons
- ⑬ Concept illustrating Ramada's development objectives of 60 unit residential/hotel building
- ⑭ Existing hotel remains





# Jackson's Point Harbourfront

## Redevelopment Plan

### ...Towards a Preferred Plan Option 2a

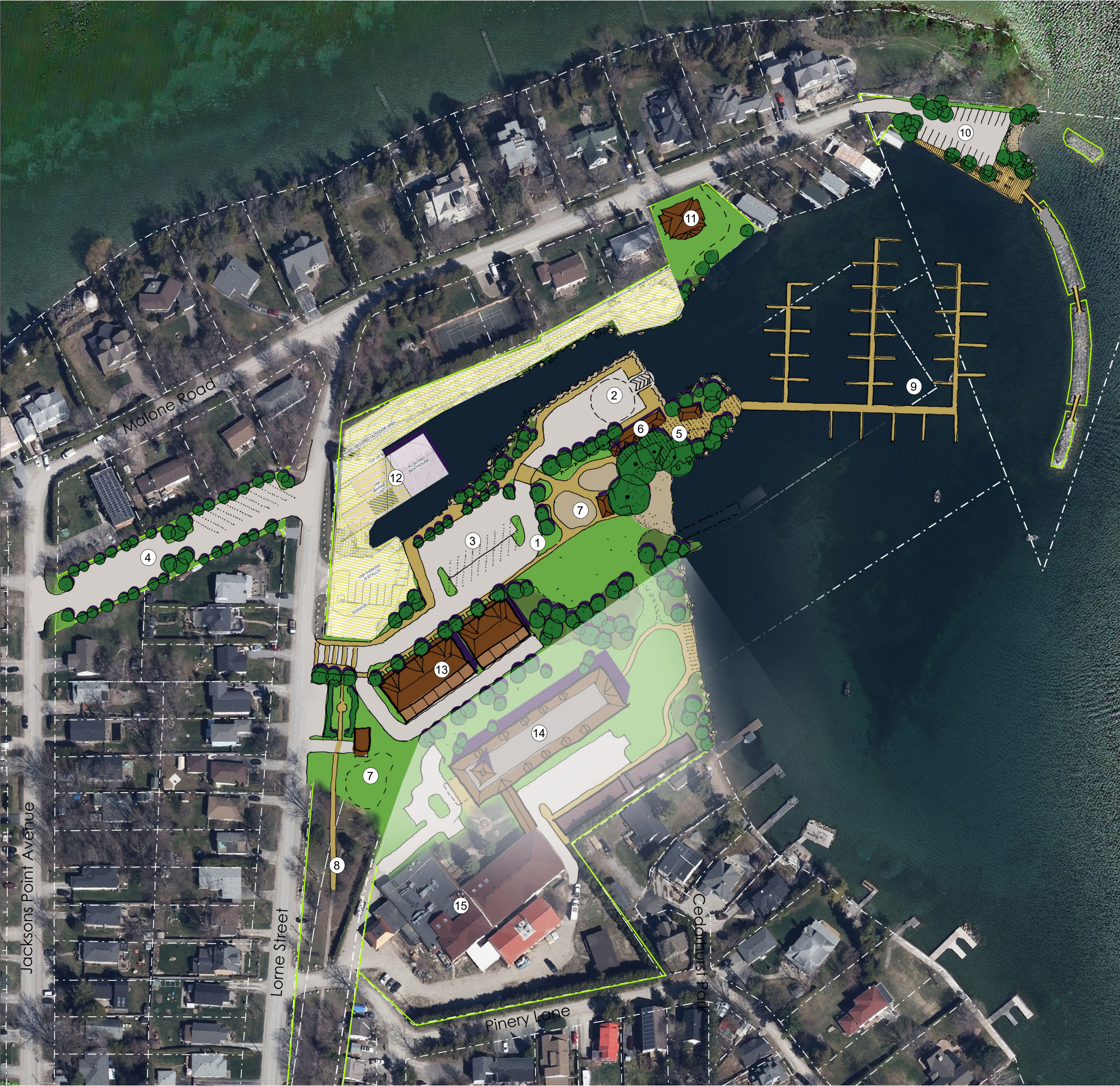
#### Realignment of Property Boundaries With Boat Launch

265m of Public Water's Edge (at Lake & Channel)

August 10, 2017

#### Features of Option 2a

- ① Bonnie Park shifts north to include channel frontage, maintains lake frontage
- ② Single lane boat launch (20' or less)
- ③ Parking lot includes vehicular and trailer parking
- ④ Use of ROW lands for public parking and/or trailer parking
- ⑤ Public gathering area  
naturalized areas  
observation area  
opportunity for pavilions/pop-up retail
- ⑥ New building incorporating washrooms for public and boating, marina office, potential retail
- ⑦ Playground can be maintained in existing location or moved closer to beach if with other amenities
- ⑧ Lorne Park trail connection maintained
- ⑨ Expanded Town slips in harbour - requires partnership due to water lot ownerships
- ⑩ Enhanced amenities at Malone Wharf  
maintain dive access  
naturalized areas  
potential seasonal bridges linking breakwaters  
observation area  
platform along wharf edge for fishing
- ⑪ Low density residential on Malone Road
- ⑫ York Regional Police controlled lands with no public access
- ⑬ New development in exchange for channel lands  
park addressed by front doors and windows  
parking located away from the park
- ⑭ Concept illustrating Ramada's development objectives of 60 unit residential/hotel building
- ⑮ Existing hotel remains





# Jackson's Point Harbourfront

## Redevelopment Plan

...Towards a Preferred Plan

### Option 2b

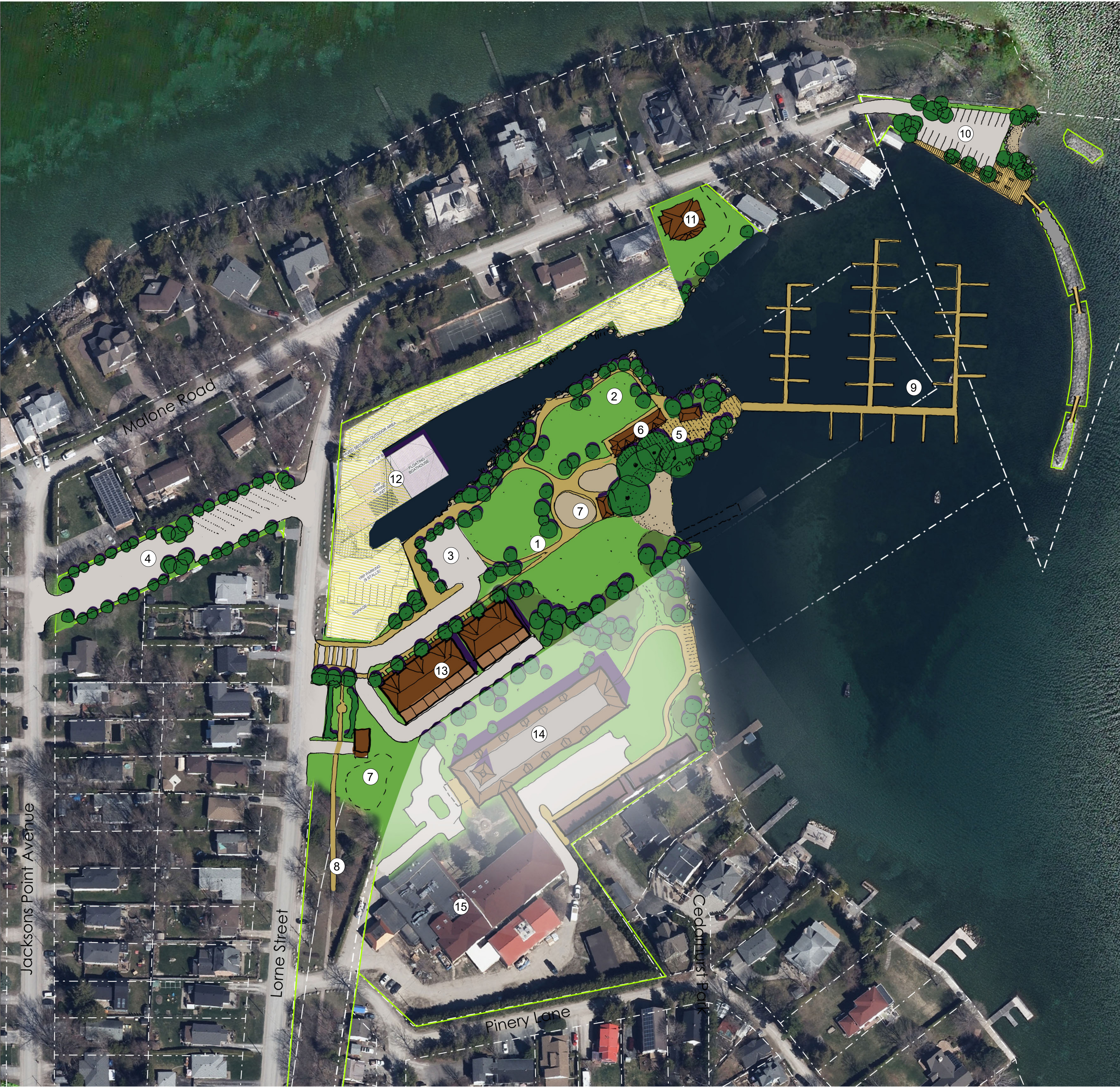
Realignment of Property Boundaries  
No Boat Launch

265m of Public Water's Edge (at Lake & Channel)

August 10, 2017

#### Features of Option 2b

- ① Bonnie Park shifts north to include channel frontage, maintains lake frontage
- ② Expanded 'green' component of park for public use if no launch
- ③ Smaller public parking within Bonnie Park
- ④ Use of ROW lands for public parking
- ⑤ Public gathering area  
naturalized areas  
observation area  
opportunity for pavilions/pop-up retail
- ⑥ New building incorporating washrooms for public and boating, marina office, potential retail
- ⑦ Playground can be maintained in existing location or moved closer to beach if with other amenities
- ⑧ Lorne Park trail connection maintained
- ⑨ Expanded Town slips in harbour - requires partnership due to water lot ownerships
- ⑩ Enhanced amenities at Malone Wharf  
maintain dive access  
naturalized areas  
potential seasonal bridges linking breakwaters  
observation area  
platform along wharf edge for fishing
- ⑪ Low density residential on Malone Road
- ⑫ York Regional Police controlled lands with no public access
- ⑬ New development in exchange for channel lands  
park addressed by front doors and windows  
parking located away from the park
- ⑭ Concept illustrating Ramada's development objectives of 60 unit residential/hotel building
- ⑮ Existing hotel remains





# Jackson's Point Harbourfront

## Redevelopment Plan

...Towards a Preferred Plan

### Option 3a

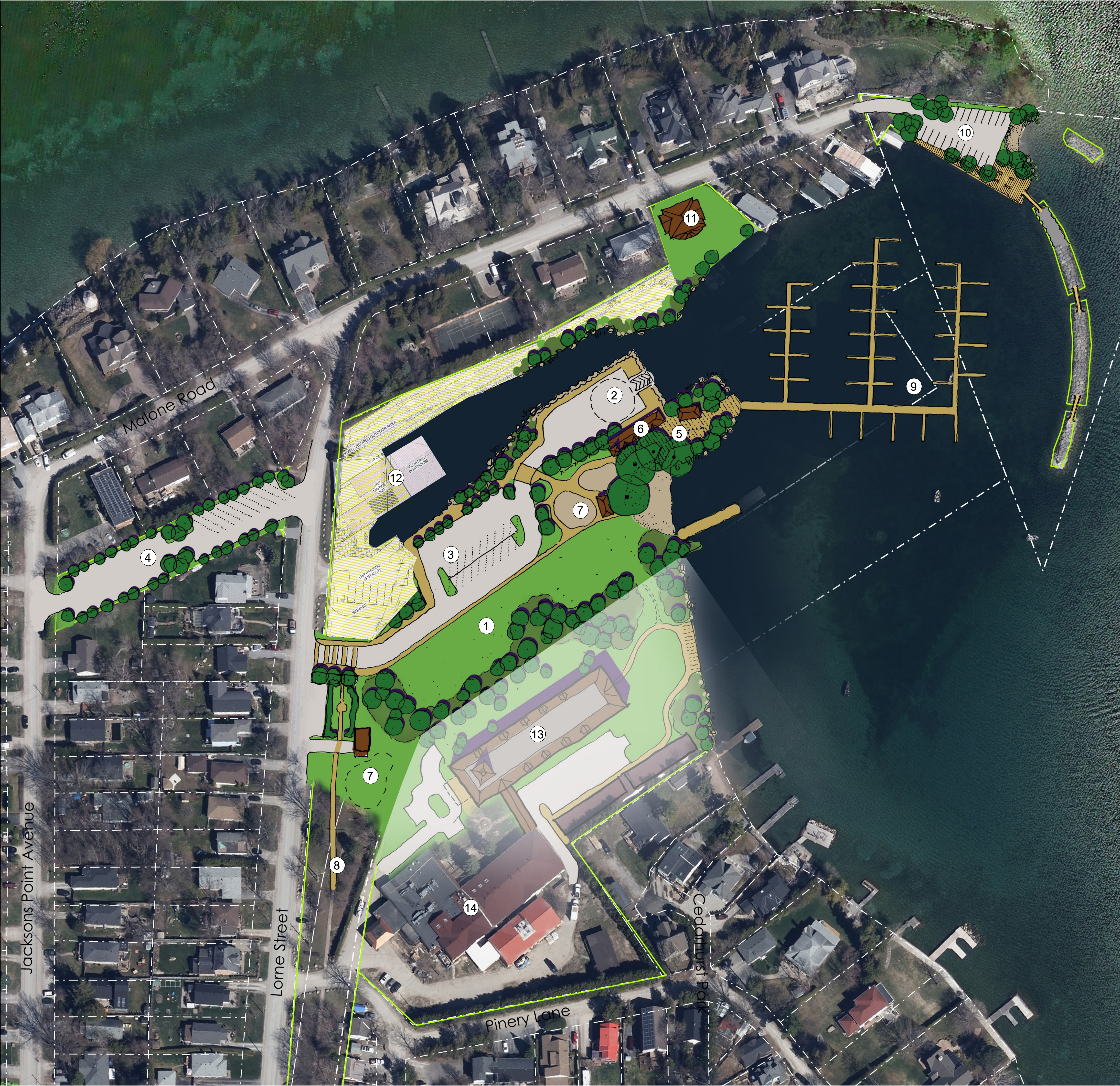
Property Acquisition  
With Boat Launch

265m of Public Water's Edge (at Lake & Channel)

August 10, 2017

#### Features of Option 3a

- ① Bonnie Park maintain in its current location
- ② Single lane boat launch (20' or less)
- ③ Parking lot includes vehicular and trailer parking
- ④ Use of ROW lands for public parking and/or trailer parking
- ⑤ Public gathering area  
naturalized areas  
observation area  
opportunity for pavilions/pop-up retail
- ⑥ New building incorporating washrooms for public and boating, marina office, potential retail
- ⑦ Playground can be maintained in existing location or moved closer to beach if with other amenities
- ⑧ Lorne Park trail connection maintained
- ⑨ Expanded Town slips in harbour - requires partnership due to water lot ownerships
- ⑩ Enhanced amenities at Malone Wharf  
maintain dive access  
naturalized areas  
potential seasonal bridges linking breakwaters  
observation area  
platform along wharf edge for fishing
- ⑪ Low density residential on Malone Road
- ⑫ York Regional Police controlled lands with no public access
- ⑬ Concept illustrating Ramada's development objectives of 60 unit residential/hotel building
- ⑭ Existing hotel remains





# Jackson's Point Harbourfront

## Redevelopment Plan

...Towards a Preferred Plan

### Option 3b

Property Acquisition

No Boat Launch

265m of Public Water's Edge (at Lake & Channel)

August 10, 2017

#### Features of Option 3b

- ① Bonnie Park shifts north to include channel frontage, maintains lake frontage
- ② Expanded 'green' component of park for public use if no launch
- ③ Smaller public parking within Bonnie Park
- ④ Use of ROW lands for public parking
- ⑤ Public gathering area  
naturalized areas  
observation area  
opportunity for pavilions/pop-up retail
- ⑥ New building incorporating washrooms for public and boating, marina office, potential retail
- ⑦ Playground can be maintained in existing location or moved closer to beach if with other amenities
- ⑧ Lorne Park trail connection maintained
- ⑨ Expanded Town slips in harbour - requires partnership due to water lot ownerships
- ⑩ Enhanced amenities at Malone Wharf  
maintain dive access  
naturalized areas  
potential seasonal bridges linking breakwaters  
observation area  
platform along wharf edge for fishing
- ⑪ Low density residential on Malone Road
- ⑫ York Regional Police controlled lands with no public access
- ⑬ Concept illustrating Ramada's development objectives of 60 unit residential/hotel building
- ⑭ Existing hotel remains

