

Town of Georgina

Official Plan

Schedule B1

KEY NATURAL HERITAGE FEATURES

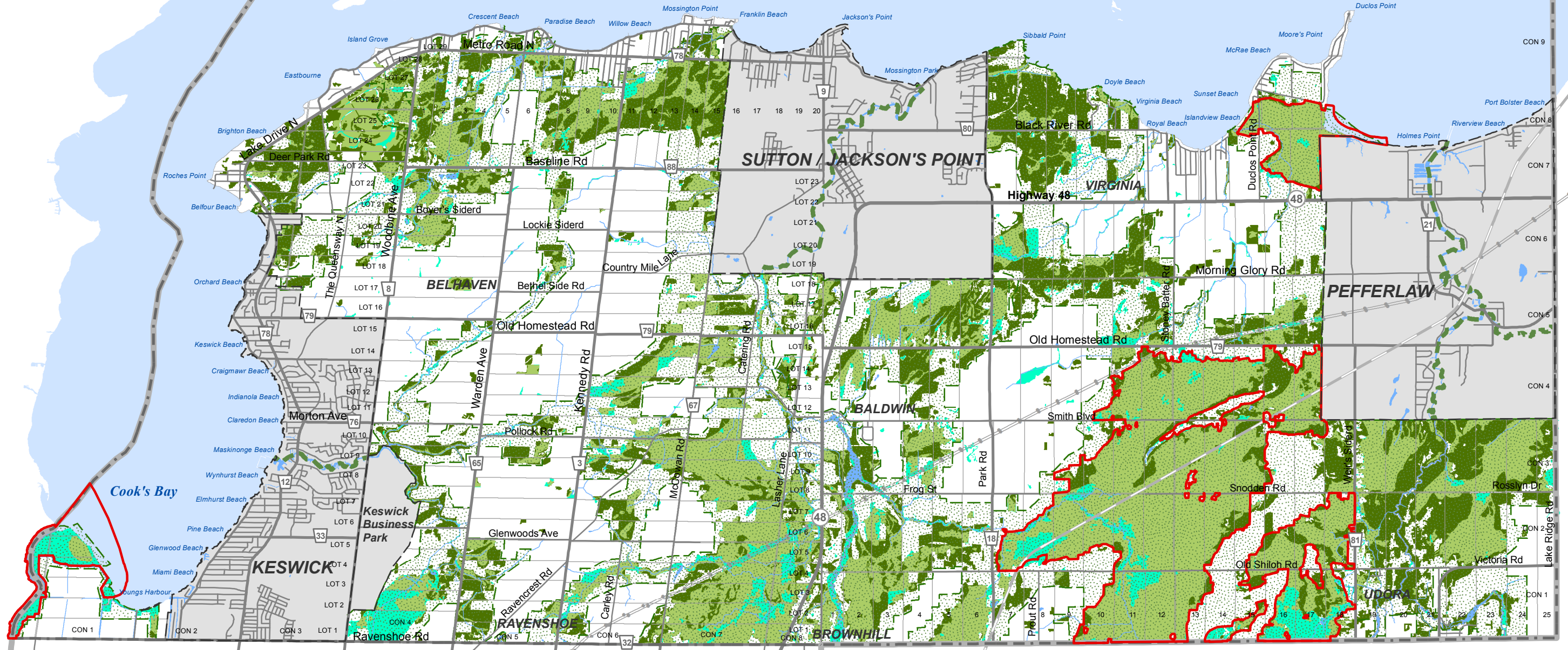
FOX ISLAND
Chippewas of Georgina
Island First Nation

SNAKE ISLAND
Chippewas of Georgina
Island First Nation

GEORGINA ISLAND
Chippewas of Georgina
Island First Nation

Lake Simcoe

The municipal and regional boundary line into Lake Simcoe extends to the northern limit as depicted in Schedule A1.

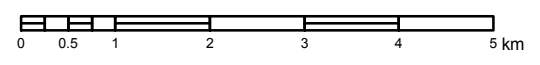


- Woodland
- Wetland
- Woodland & Wetland
- Life Science Area of Natural & Scientific Interest
- Greenland System
- River Valley Connections

- BASE MAP INFORMATION**
- Provincial Highway
 - Regional Road
 - Road
 - Railway
 - Municipal Boundary
 - Regional Boundary
 - Hydro Corridor
 - Watercourse/Waterbody
 - Lake Simcoe



GEORGINA



January 2017

Sources: Town of Georgina, Regional Municipality of York, ArcGIS Online Basemaps, Lake Simcoe Region Conservation Authority. Produced by York Region and MHBC Planning under licence from Ontario Ministry of Natural Resources. Copyright © Queens Printer 2015