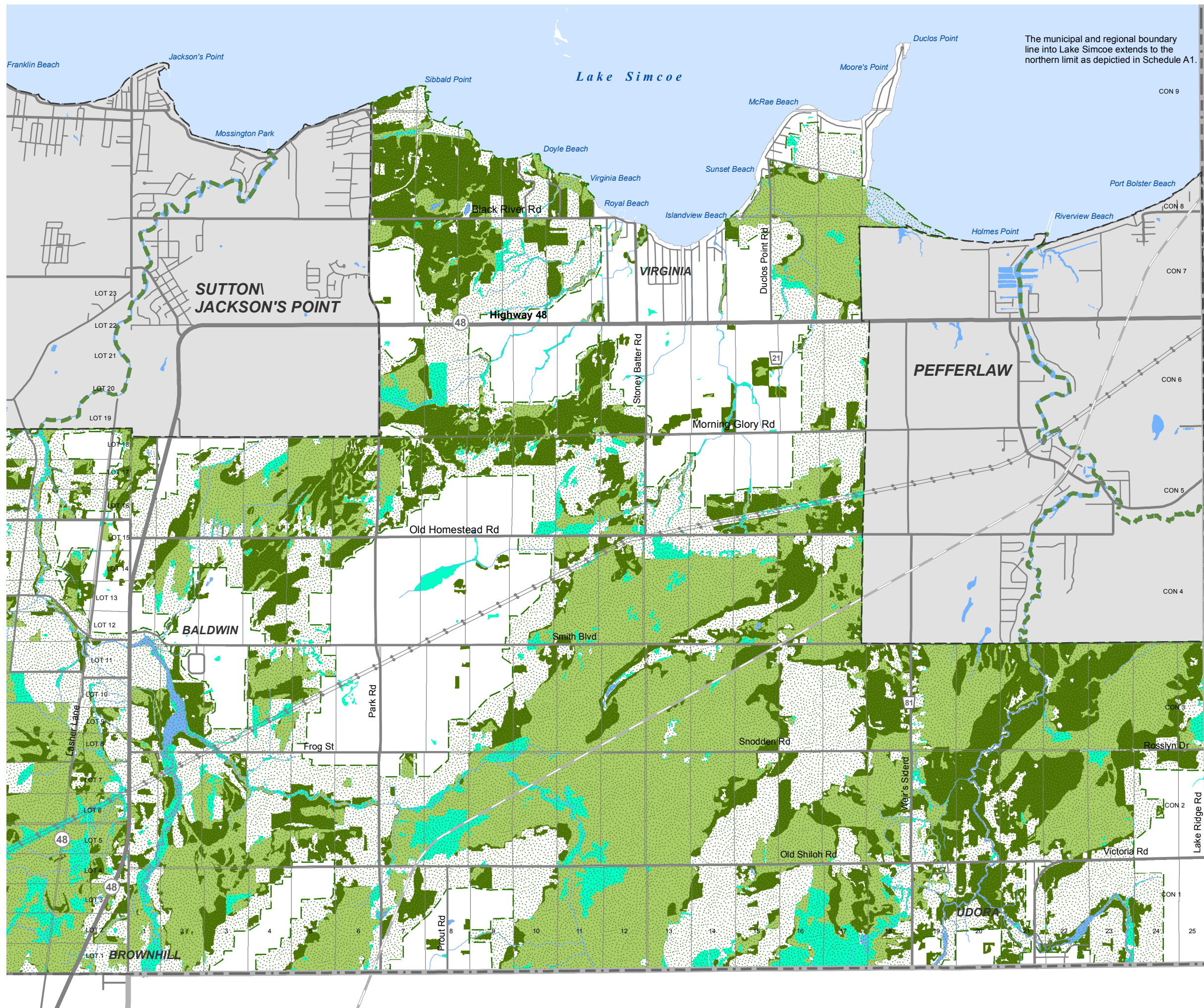


Town of Georgina

Official Plan

Schedule B1 KEY NATURAL HERITAGE FEATURES (EAST)

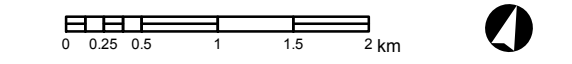


The municipal and regional boundary line into Lake Simcoe extends to the northern limit as depicted in Schedule A1.

- Woodland
- Wetland
- Woodland & Wetland
- Life Science Area of Natural & Scientific Interest
- Greenland System
- River Valley Connection

BASE MAP INFORMATION

- 48 Provincial Highway
- Road
- Railway
- Municipal Boundary
- Regional Boundary
- Hydro Corridor
- Secondary Plan Area
- Watercourse/Waterbody
- Lake Simcoe



January 2017



GEORGINA

Sources: Town of Georgina, Regional Municipality of York, ArcGIS Online Basemaps. Lake Simcoe Region Conservation Authority. Produced by York Region and MHBC Planning under licence from Ontario Ministry of Natural Resources. Copyright © Queens Printer 2015