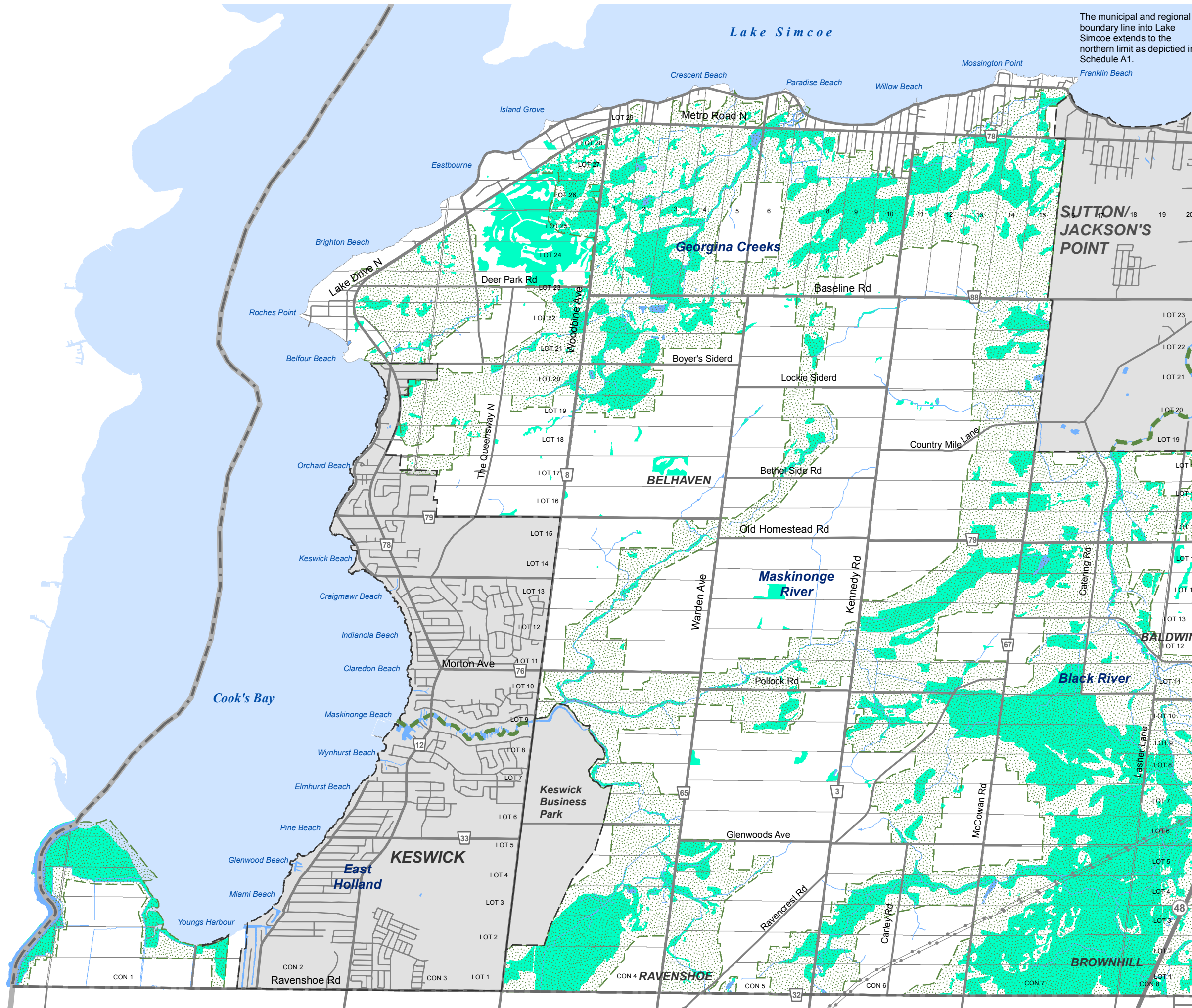


# Town of Georgina

## Official Plan Schedule B2 KEY HYDROLOGIC FEATURES (WEST)

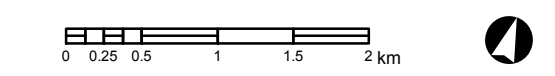
The municipal and regional boundary line into Lake Simcoe extends to the northern limit as depicted in Schedule A1.



- Wetland
- Greenland System
- River Valley Connections
- Subwatershed Area

### BASE MAP INFORMATION

- Provincial Highway
- Road
- Railway
- Municipal Boundary
- Regional Boundary
- Hydro Corridor
- Secondary Plan Area
- Watercourse/Waterbody
- Lake Simcoe



January 2017



**GEORGINA**

Sources: Town of Georgina, Regional Municipality of York, ArcGIS Online Basemaps. Lake Simcoe Region Conservation Authority. Produced by York Region and MHBC Planning under licence from Ontario Ministry of Natural Resources. Copyright © Queens Printer 2015