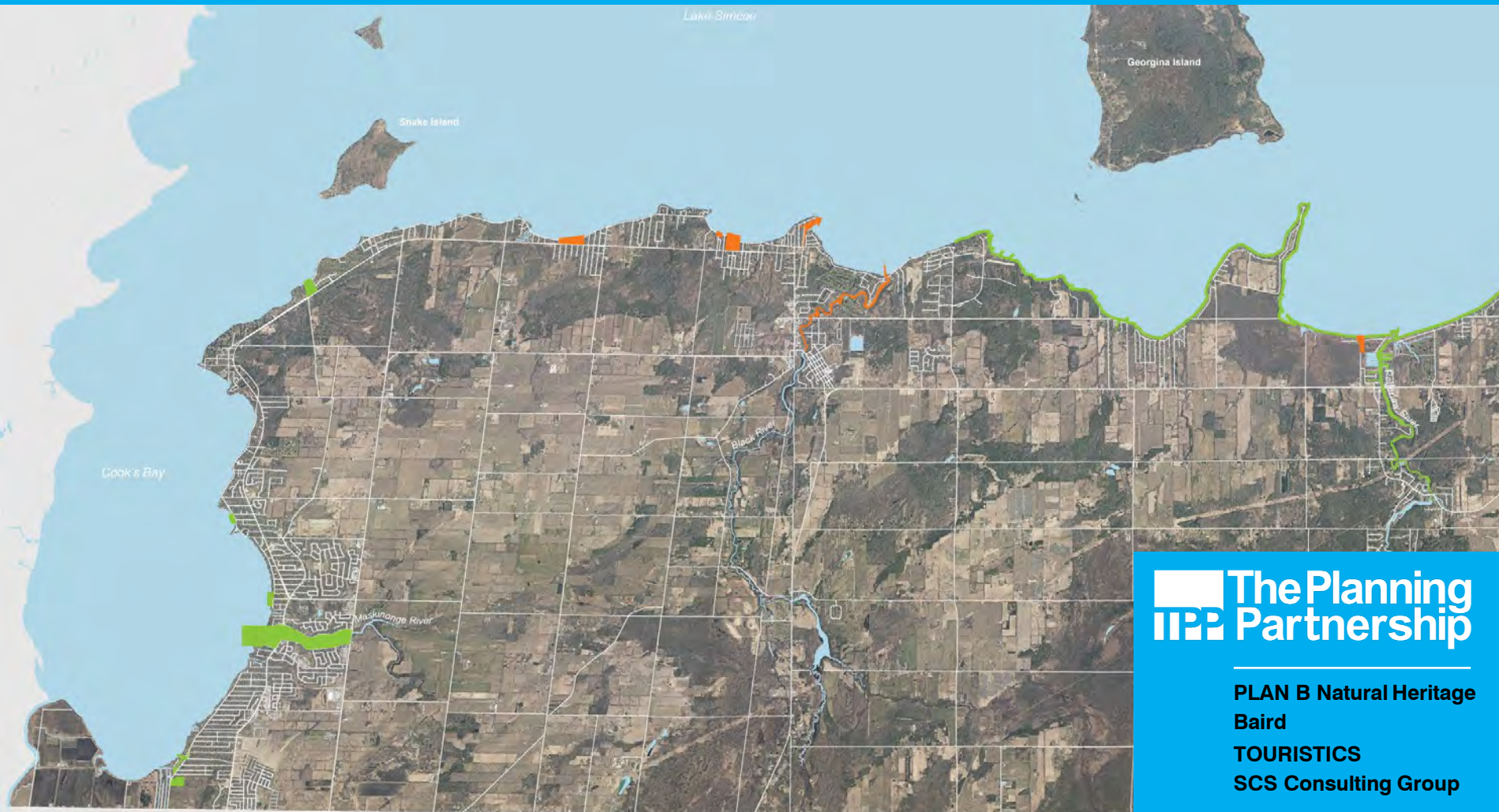


Town of Georgina

Waterfront Parks Master Plan

Public Engagement 2
Emerging Concepts

November 21 and 22, 2020



 **The Planning
Partnership**

**PLAN B Natural Heritage
Baird
TOURISTICS
SCS Consulting Group**

Zone 4 Holmes Point Park – You wanted.....



- Permanent washrooms
- Better management of the park to avoid overcrowding
- Better management of parking
- Resident only parking on the land west of the road
- Make the park for residents only
- Some suggested pop up for rental of kayaks, others said no, need to address capacity of the park first, others said leave it to the businesses in the area
- Enhanced landscape
- Easier access to the water, there's a sharp drop,
- it's not accessible
- A bigger beach, - possibly by cutting back into the park
- Better signage

Zone 4 Holmes Point Park – Emerging Concept



SUITE OF DESIGN ELEMENTS FOR WATERFRONT PARKS

Brand the Waterfront | consistent, coordinated
and recognizable design elements and features

Connect the Parks |
thematically tie the parks through
unifying and common elements and
furnishings

Make it Beautiful, Comfortable & Inviting |
high quality, low maintenance thematically

Incorporate Sustainability |
thematically

Permanent Washrooms | designed as 'gems' in the park



Temporary Washrooms | seasonal & special events



Pergolas | dappled shade & beautiful focal elements



Shade Structures |

every day and special events



Seating and Gathering | benches, tables, furniture



Sense of Place | tell a story of the place



Play and Explore |

Adventure playground



Exercise and Fitness |

trail fitness, exercise equipment



Fitness Circuit |

Barrie Waterfront

Barrie Waterfront Fitness Circuit

Area 1
Sit Up
Bars
Pull Up-Strength

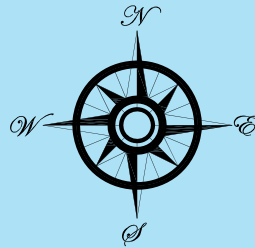
Area 4
Hip
Cross (2)

Area 2
Chest
Back
Leg Press

Area 5
Chest
Back
Springer

Area 3
Double Airwalk
Hip
Twister

Area 6
Combination
Unit



Kempfenfelt Bay

LAKESHORE DR

Drainage & Grading | Bioretention Swales



Kiosks | Pop Up + Permanent

Food & Beverage, Rentals, Stores



Activities |

Youth, Adults and Seniors



Special Paving | defining spaces and movement



Signage |

Distinct identity, provides context to the park system, is positive and welcoming



Signage |

Let's people know where they are and how to behave in a positive and welcoming way



Signage |

encourages 'responsible' behaviour through humour

WHY ARE YOU LITTERING?

- ☒ I AM A JERK
- ☒ I DON'T CARE ABOUT NATURAL AREAS
- ☒ MOMMY STILL CLEANS UP AFTER ME
- ☒ ALL OF THE ABOVE

PS. DON'T BE A TOOL AND STEAL THE GOLF FLAGS EITHER.
THIS COURSE HAS BEEN BUILT AND PAID FOR BY VOLUNTEERS.
WE WANT IT TO BE FREE FOR ALL TO PLAY AND ENJOY.
LITTERING AND THEFT DON'T HELP.



Signage | nature and heritage interpretation



Follow the path above and look for identifying plaques on Central Park's most magnificent trees along the way.

AMERICAN ELM
Ulmus americana

Common Name
Scientific Name

Learn more about Central Park's trees by visiting
centralparknyc.org/treewalks

Tree Walk Supported by
BERT W. SCULLY AND BARRIE A. WIGMORE

WELCOME TO THE DENE SLOPE A NATIVE MEADOW

Have You Made a Meadow?
Establishing and sustaining a native meadow in an urban park is a process that takes multiple seasons and ongoing management.

SEED COLLECTION
The process begins with the collection of seeds and gluing of seed pods to separate seed heads and capture the seeds of weeds and native plants.

PLANTING
In the following season, the seedlings are planted with native grasses and wildflowers.

WINTER MAINTENANCE
Maintenance mowing times are moved to later in the season to allow the seedlings to establish.

SUBSEQUENT SEASONS
The meadow has begun to establish. Supplemental plantings of native grasses and wildflowers reinforce the process.

MAINTENANCE
Maintenance mowing times are moved to later in the season to allow the seedlings to establish.

ONGOING MANAGEMENT
As the meadow establishes, seed pressure is reduced, and the landscape continues to mature and thrive with the help of ongoing management.



Native meadows provide habitat for a wide variety of birds and pollinating insects.

The design that Frederick Law Olmsted and Calvert Vaux conceived for Central Park transformed the rocky, marshy pre-park site into a masterful composition of diverse landscapes to create an idealized expression of rural scenery. Those included picturesque woods, serene lakes and ponds, and the landscape type most closely associated with the Park and its creators—pastoral meadows. Meadows figured prominently in Olmsted and Vaux's vision for the Park, as reflected in the title of their winning competition entry for its design, which they called, simply, "Greenward."

The meadow was established and is sustained with support provided by
Robert J. Katz and Arline Mann

Additional support for parkwide maintenance and restoration is provided by

**PAULSON
FAMILY
FOUNDATION**

As you enjoy the meadow, please help us protect and sustain it.

Stay on the trails at all times.

Dogs must be leashed and kept on the trails at all times.

Bicycles, skateboards, and rollerblades are not permitted.

Carry out what you carry in. There are no trash cans in this landscape.

The Park's designers were focused on the lasting effect that the scenic quality of meadows would have on the human spirit. But meadows have additional value beyond the psychological effects Olmsted and Vaux emphasized. Landscapes planted with native grasses and wildflowers produce ecological and environmental benefits. In addition to supporting a broader diversity of wildlife, they can be a practical, sustainable treatment for certain landscape types, once native grasses are established at sufficient height to prevent self-seeding invasive species and obviate the need for mowing.

**CENTRAL PARK
CONSERVANCY**
central to the park



Winter Activities |

Ice fishing, skating, snowmobiles

