

Fall Registration: August 22
Winter Registration: December 5



THE **ROC**

Your Guide to ROC'n Winter FUN!

Starting from
\$79 ^{+hst}

EARLY BIRD SEASON PASS

2017
2018

Tube, Ski, Snowboard

Buy Now, Save Big!

Limited time offer.



Get your Season Pass Today and receive early Registration for Lessons starting November 21!



Perks to Buying a Season Pass

Show your ROC Season Pass and receive **up to 50% off your lift ticket** and major discounts at participating resorts:

- ❄️ Brimacombe
- ❄️ Calabogie Peaks Resort
- ❄️ Chicopee
- ❄️ Horseshoe Resort
- ❄️ Sir Sam's Ski & Bike
- ❄️ Mount St. Louis Moonstone

Check with the specific resort for their special offer to ROC members.

FREE

Amenities at The ROC:

Cub Club Mini Snowboard Park, Tobogganing, Skating & Nature Trails!

**Unsupervised; use at own risk*



Ski & Snowboard Lessons

Mini Shredders Snowboard Lessons

These Introductory Snowboard Lessons are a great way to spend your winter and develop a passion for snowboarding at a young age. Our professional instructors will work with participants and their parents/guardians to assist them in learning the basics of snowboarding. *Parents are required on foot to assist their child during the lesson.*



Ages: 3 to 6 yrs

Day: Wed, Thurs, Fri, Sat, Sun

Beginner 1 Snowboard Lessons

These Introductory Snowboard Lessons are for first timer riders. *No previous experience necessary.* This will be the student's first snowboarding experience. Students will learn how to use the equipment, how to move around on flat ground, develop moving balance, develop confidence sliding with both feet attached to the board and to learn control direction and speed.

Ages: 7 to 17 yrs

Day: Wed, Thurs, Fri, Sat, Sun

Beginner 2 Snowboard Lessons

These snowboard lessons are for participants who have previously snowboarded but never taken a lesson OR for participants who completed a beginner snowboard lesson and want to refine their skills. Students will focus on perfecting their skills such as moving balance, controlled carving, direction and speed.

Ages: 7 to 17 yrs

Day: Wed, Thurs, Fri, Sat, Sun

NEW

Riders Green Program

The RIDERS program is designed for individuals to advance their basic and fundamental snowboard skills and develop the specific skills required to entice the competitive snowboard disciplines. Upon completion of the program, participants will have the ability required to successfully join a competitive snowboard club, excel at competition, or simply snowboard skillfully for life. Participants must have the ability to link novice turns.

Ages: 7 to 17 yrs

Day: Thurs, Sun



NEW

Mini Viking - Penguin Ski

Goal: Skis with assistance

Penguin Ski lessons are for participants who are brand new to skiing or participants who cannot ski independently. Participants will learn to glide with assistance, balance while walking on skis and to have fun while skiing.

Ages: 3 to 5 yrs

Day: Sun



NEW

Mini Viking - Panda Ski

Goal: Snowplows without assistance

Panda Ski Lessons are for participants who can glide with assistance (can make a pizza). Participants will learn to maintain balance while gliding, maintaining a snowplow position and how to stop in a snowplow.

Prerequisite: Skis with assistance

Ages: 3 to 5 yrs

Day: Sun



NEW

Mini Viking - Giraffe Ski

Goal: Executes direction changes with skis in a wedge

Giraffe Ski Lessons are for participants who can glide without assistance. Participants will learn to control their speed in a snowplow, balance over both feet and stopping by turning on both sides.

Prerequisite: Snowplows without assistance

Ages: 3 to 5 yrs

Day: Sun



Beginner Ski Step 1

These beginner ski lessons are for participants who are new to skiing. Participants will learn how to use the equipment, how to execute turns, learn control, balance and increase their stability.

Ages: 7 to 17 yrs

Day: Thurs, Sat

Beginner Ski Step 2

These lessons are the next step for beginners wanting to improve their skills. Participants will learn how to ski in a parallel position, increase control, balance and increase their stability on steeper terrain. The participants must be able to execute linked rhythmical snowplow turns. Previous ski lessons or experience recommended.

Ages: 7 to 17 yrs

Day: Fri, Sat

Equipment

- **Equipment is not provided.** All participants must provide their own ski industry standard equipment (skis, ski boots, snowboard, snowboard boots and helmet).
- Helmet rentals and leashes are available at the ticket office.
- Refunds will not be provided to participants with improper equipment.

Group Lesson Pricing

Season Pass Holders: \$98 per person

Non-Pass Holders: \$182 per person

| Age | # | Day | Start Date | Time |
|-----------------------------|---|--------|-----------------|-----------------|
| Mini Shredders | | | | |
| 3-6yrs | 8 | Sa | Jan-06 | 10AM-11AM |
| | 8 | W | Jan-10 | 4:30PM-5:30PM |
| | 8 | Th | Jan-11 | 5:30PM-6:30PM |
| | 8 | F | Jan-12 | 4:30PM-5:30PM |
| | 8 | S | Jan-14 | 10AM-11AM |
| | 8 | S | Jan-14 | 10AM-11AM |
| 8 | S | Jan-14 | 11:15AM-12:15PM | |
| Beginner 1 Snowboard | | | | |
| 7-9yrs | 7 | Sa | Jan-06 | 11:15AM-12:15PM |
| | 8 | W | Jan-10 | 5:30PM-6:30PM |
| | 8 | Th | Jan-11 | 4:30PM-5:30PM |
| | 8 | S | Jan-14 | 11:15AM-12:15PM |
| 10-12yrs | 8 | Sa | Jan-06 | 12:45PM-1:45PM |
| | 8 | W | Jan-10 | 4:30PM-5:30PM |
| | 8 | Th | Jan-11 | 5:30PM-6:30PM |
| | 8 | F | Jan-12 | 4:30PM-5:30PM |
| 8 | S | Jan-14 | 12:45PM-1:45PM | |
| 13-17yrs | 8 | Sa | Jan-06 | 12:45PM-1:45PM |
| Beginner 2 Snowboard | | | | |
| 7-9yrs | 8 | Sa | Jan-06 | 10AM-11AM |
| | 8 | W | Jan-10 | 5:30PM-6:30PM |
| | 8 | Th | Jan-11 | 4:30PM-5:30PM |
| | 8 | F | Jan-12 | 6:45PM-7:45PM |
| | 8 | S | Jan-14 | 12:45PM-1:45PM |
| 10-12yrs | 8 | Sa | Jan-06 | 11:15AM-12:15PM |
| | 8 | W | Jan-10 | 6:45PM-7:45PM |
| | 8 | Th | Jan-11 | 6:45PM-7:45PM |
| 13-17yrs | 8 | F | Jan-12 | 8PM-9PM |

Mini Viking - Penguin Ski

| | | | | |
|--------|---|---|--------|---------------|
| 3-6yrs | 8 | S | Jan-14 | 10AM-11AM |
| | 8 | S | Jan-14 | 2PM-3PM |
| | 8 | S | Jan-14 | 3:15PM-4:15PM |

Mini Viking - Panda Ski

| | | | | |
|--------|---|---|--------|-----------------|
| 3-6yrs | 8 | S | Jan-14 | 11:15AM-12:15PM |
|--------|---|---|--------|-----------------|

Mini Viking - Giraffe Ski

| | | | | |
|--------|---|---|--------|----------------|
| 3-6yrs | 8 | S | Jan-14 | 12:45AM-1:45PM |
|--------|---|---|--------|----------------|

Beginner Ski Step 1

| | | | | |
|--------|---|----|--------|-----------|
| 6-9yrs | 8 | Sa | Jan-06 | 10AM-11AM |
|--------|---|----|--------|-----------|

| | | | | |
|----------|---|----|--------|-----------------|
| 10-12yrs | 8 | Sa | Jan-06 | 11:15AM-12:15PM |
|----------|---|----|--------|-----------------|

| | | | | |
|----------|---|----|--------|---------------|
| 13-17yrs | 8 | Th | Jan-11 | 6:45PM-7:45PM |
|----------|---|----|--------|---------------|

| | | | | |
|----------|---|----|--------|----------------|
| 13-17yrs | 8 | Sa | Jan-06 | 12:45PM-1:45PM |
|----------|---|----|--------|----------------|

Beginner Ski Step 2

| | | | | |
|--------|---|----|--------|----------------|
| 6-9yrs | 8 | Sa | Jan-06 | 12:45PM-1:45PM |
|--------|---|----|--------|----------------|

| | | | | |
|----------|---|----|--------|---------|
| 10-12yrs | 8 | Sa | Jan-06 | 2PM-3PM |
|----------|---|----|--------|---------|

| | | | | |
|----------|---|---|--------|---------------|
| 13-17yrs | 8 | F | Jan-12 | 6:45PM-7:45PM |
|----------|---|---|--------|---------------|

| | | | | |
|----------|---|---|--------|---------------|
| 13-17yrs | 8 | F | Jan-12 | 6:45PM-7:45PM |
|----------|---|---|--------|---------------|

Riders Green Program

Season Pass Holders:
\$190 per person

Non-Pass Holders:
\$270 per person

| | | | |
|---|----|--------|---------------|
| 8 | Th | Jan-11 | 5:30PM-7:30PM |
|---|----|--------|---------------|

| | | | |
|---|---|--------|-----------|
| 8 | S | Jan-14 | 10AM-12PM |
|---|---|--------|-----------|



Private or Semi-Private Lessons

Evenings & Weekends

Wednesday - Sunday

Times Vary

1-hr, 4-week lessons

Session 1 Starts January 6

Session 2 Starts February 4

Private

Season Pass Rate \$113

Non-Season Pass Rate \$185

Instruction is 1:1

Semi-Private

Season Pass Rate \$62

Non-Season Pass Rate \$105

Participants must be at the same age and ability.

Both participants must be registered at the same time

Instruction is 2:1.

Holiday, Family Day & March Break

Private & Semi-Private

Dates & Times Vary

1 hour lessons

Season Pass Rate: \$25

Non-Season Pass Rate: \$45

See page 14 of the Recreation & Culture Guide for PA Day and March Break Camps!

For more information or to register contact Recreation & Culture at 905-476-4301 ext. 2354

UPCOMING EVENTS

ROC Job Fair

📅 **Saturday, October 28**

📍 **The ROC Chalet**

🕒 **10 a.m. to 2 p.m.**

The ROC is hosting a job fair for our winter seasonal positions. We are hiring for Lift Attendants, Ski Patrol, Terrain Park, Maintenance, Cafeteria Attendants, Customer Service Representative, Snow Makers, Groomers, Winter Operation Lead as well as Ski and Snowboard Instructors. *Please bring your resume. Job applications will also be available.*

Ski & Board Swap

📅 **Saturday, November 11**

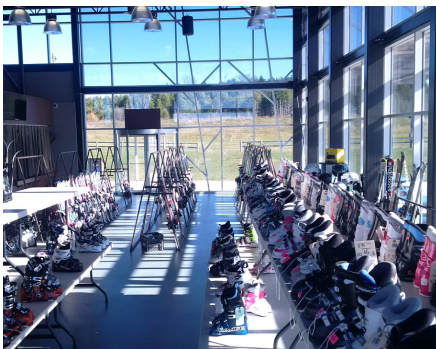
📍 **The ROC Chalet**

🕒 **9 a.m. to 4 p.m.**

There will be tons of brand new, non-current and pre-owned skis, boards, boots and accessories available for purchase. This is an excellent opportunity to upgrade your old equipment and save money. Every purchase made at the Ski & Board Swap helps support Canadian Ski Patrol's advanced first aid training programs and volunteer services at resorts across the country.

Have equipment to sell?

Drop-off Friday, November 10
between 1 p.m. and 7 p.m.



The ROC || Winter Fun Guide

New Year's Eve Celebration

📅 **Saturday, December 31**

📍 **The ROC Chalet**

🕒 **5 p.m. to 8 p.m.**

The ROC is the perfect place to ring in the New Year with your family. There will be live entertainment, special menu items, face painting, noise maker workstations, kid friendly countdown (8 p.m.) with a hot chocolate toast. You don't want to miss it! **Regular tube/lift and chalet prices apply.*

SnoFest

📅 **Saturday, February 3**

📍 **The ROC & GPV**

🕒 **10 a.m. to 3 p.m.**

Join us for this wintery FREE Family event with lots of activities for all ages! Inflatables, games, giveaways, and lots more frosty fun! With live performances and entertainment for the whole family! It is a snowy event that will warm up your winter!

Slopestyle Competition

📅 **Saturday, March 3**

📍 **The ROC Chalet**

🕒 **10 a.m. to 3 p.m.**

There will be an awesome park setup for both skiers and snowboarders with heaps of prizes and giveaways! You don't want to miss it! Registration opens at 10 a.m. on March 3.

Cardboard Box Toboggan Races

📅 **Thursday, March 14**

📍 **The ROC Chalet**

🕒 **10 a.m. to 3 p.m.**

Use your imagination and recycle that new refrigerator or TV box. We challenge you to create an awesome toboggan or sled made strictly out of cardboard/household items and enter it into our competition. Entrance is FREE for all ages and there are tons of cool prizes to be won.

Puddle Jump

📅 **TBA (last weekend of the season)**

📍 **The ROC**

🕒 **12 p.m.**

End the winter season with a splash! Whether you're tubing, skiing or snowboarding, test the waters and your luck by attempting to make it across our oversized puddle. **All skill levels welcome - costumes & team spirit encouraged.*

Learn to snowboard for FREE at our Cub Club Mini Park!

The Cub Club Mini Park is a series of elements and obstacles that focus on different skills such as stance, balance, and turning. Parents/guardians can sign out the equipment from the ticket office and use the park at their leisure.

Sponsored by: 
HEALTHY KIDS
COMMUNITY CHALLENGE
GEORGIA

Coming Soon!

Cub Club Snowboard Lessons
with Equipment for ages 1 to 6 yrs