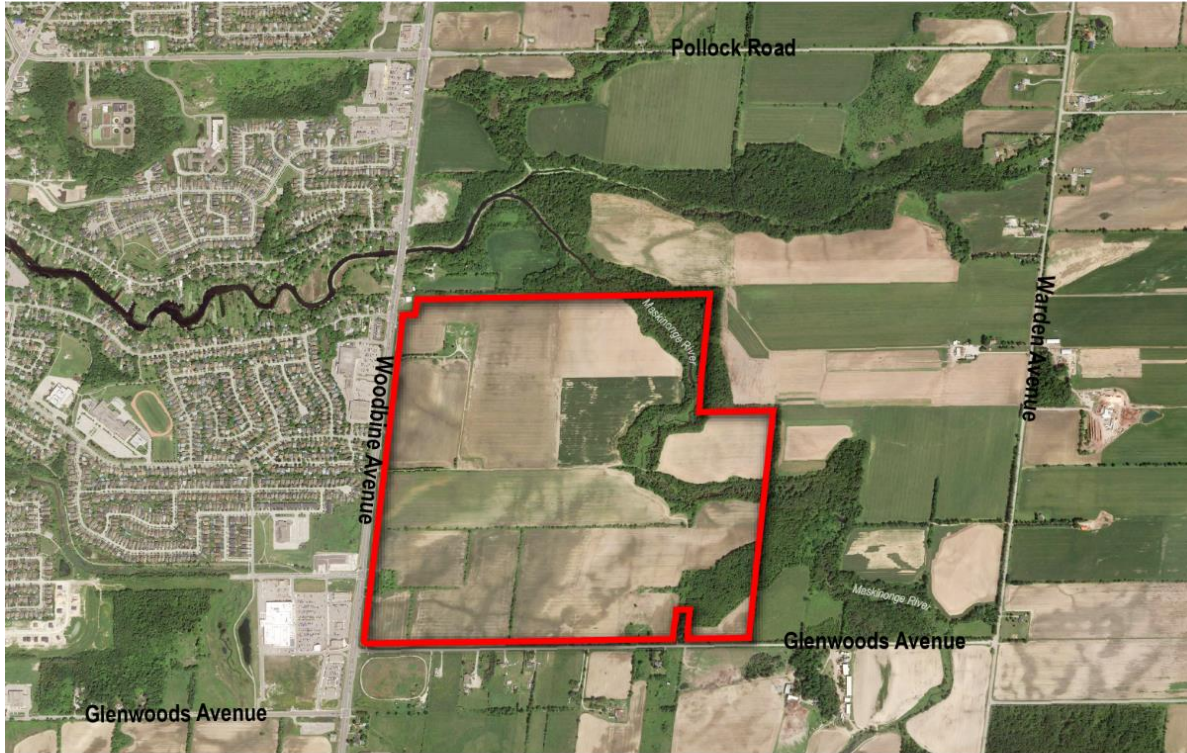


Keswick Business Park Redline Draft Plan

GreyPan Keswick TIC
(File No. 19T-13G02)

Council Meeting
April 13, 2022
7:00pm

SUBJECT SITE



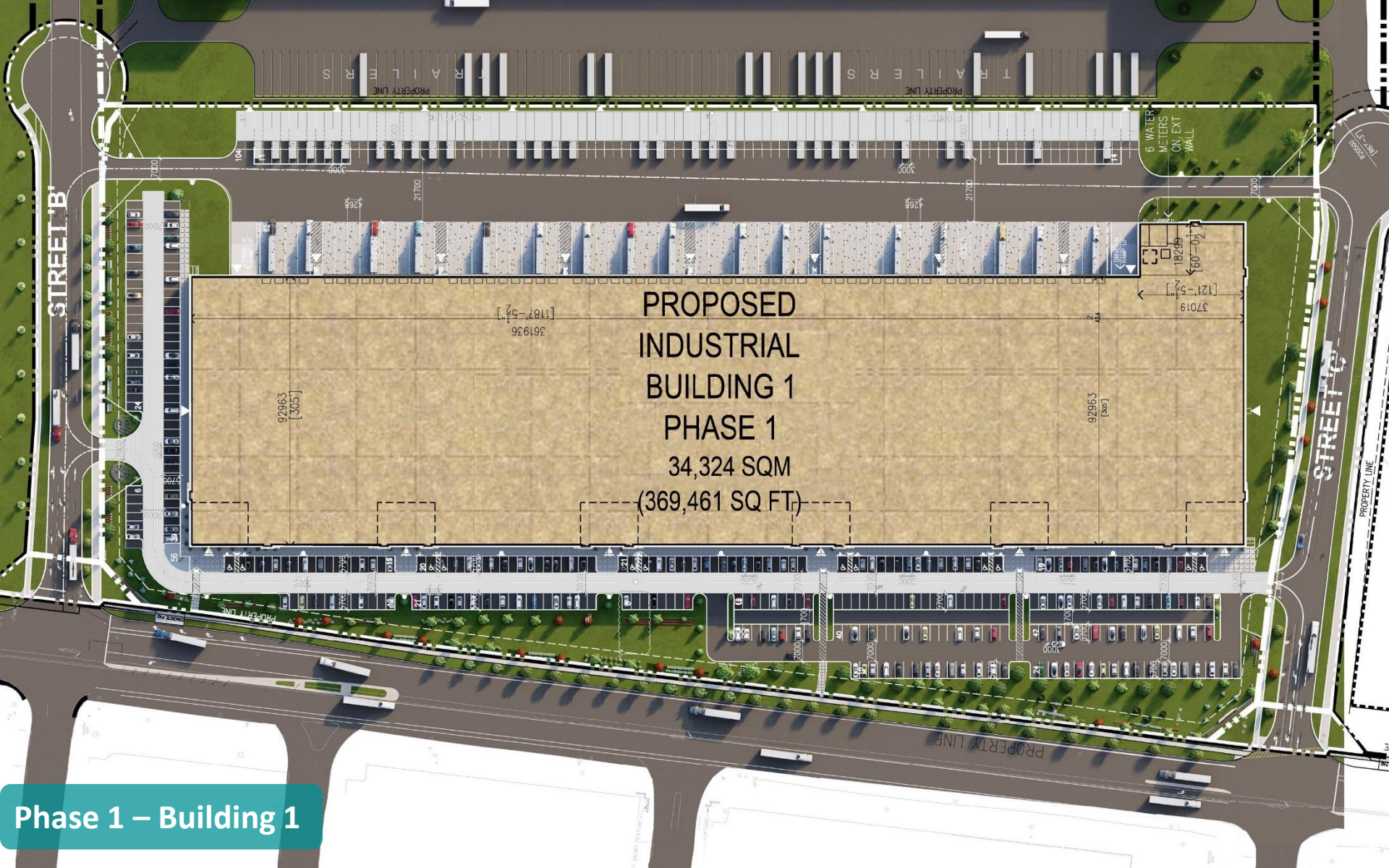
Location	Northeast quadrant of Glenwoods Avenue and Woodbine Avenue
Size	114 hectares (282 acres)
Current Status	Vacant

 SUBJECT LANDS



75 0 150 300m

Google Earth, July 2018



PROPOSED
INDUSTRIAL
BUILDING 1
PHASE 1
34,324 SQM
(369,461 SQ FT)

Phase 1 – Building 1



VIEW FROM STREET B & WOODBINE



VIEW FROM STREET C & WOODBINE



VIEW FROM NORTHWEST CORNER

