

Town of Georgina Official Plan Review

Open House

Hamlets of Virginia, Baldwin,
Belhaven



January 27, 2014



OUTLINE

Agenda

Official Plans

Why Review?

Greenbelt Plan

Population
Forecast

Define the
Character of
Your Hamlet

Opportunities
and Constraints

Future
Development
Objectives

Agenda

- Introductions
- Project Background
 - Why Review the Official Plan?
 - What does the Current Official Plan Contain?
 - What level of growth do we expect ?
- Define Hamlet Character
- Opportunities and Constraints
- Outline Next Steps

OUTLINE

Agenda

Official Plans

Why Review?

Greenbelt Plan

Population Forecast

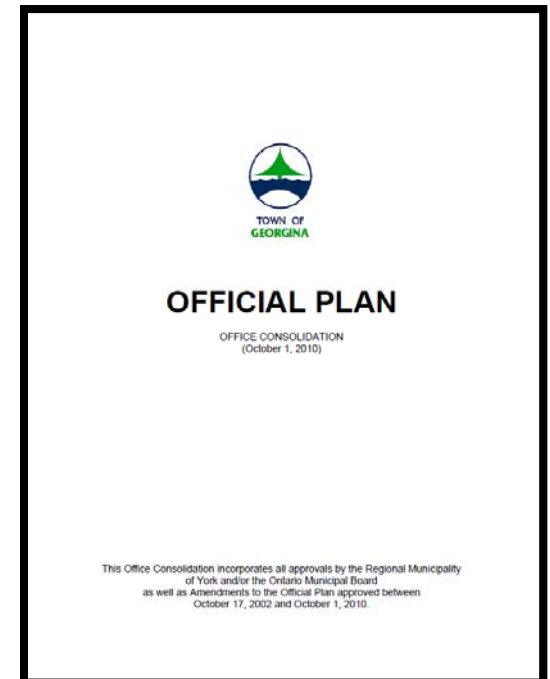
Define the Character of Your Hamlet

Opportunities and Constraints

Future Development Objectives

Official Plans

- Required under the Planning Act
- Overall Vision, Guiding Principles, Objectives
- Outlines Future Land Use
- Long Term Policy Document
- Guides Decisions of Council
- Enables Specific By-laws



OUTLINE

Agenda

Official Plans

Why Review?

Greenbelt Plan

Population Forecast

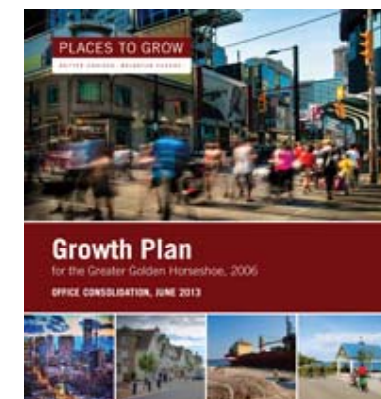
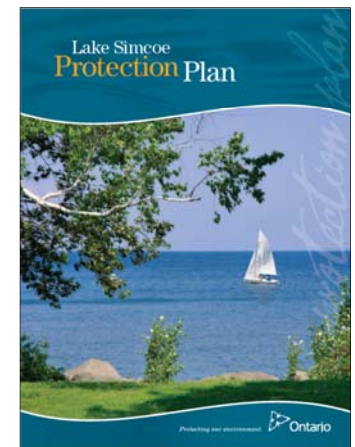
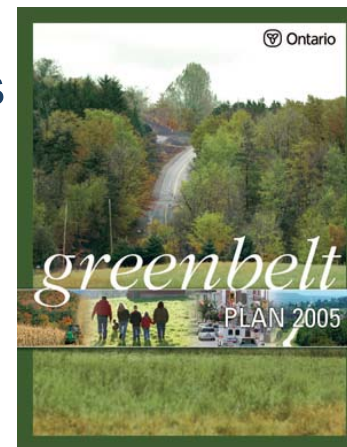
Define the Character of Your Hamlet

Opportunities and Constraints

Future Development Objectives

Why Review?

- Review is Mandated by the Planning Act
- Ensure Consistency With Provincial Policy Statements
- Ensure Conformity with Provincial Plans
- Comply with Regional Official Plan
- Ensure the Plan is relevant to meet the current and future needs of the Municipality



OUTLINE

Agenda

Official Plans

Why Review?

Greenbelt Plan

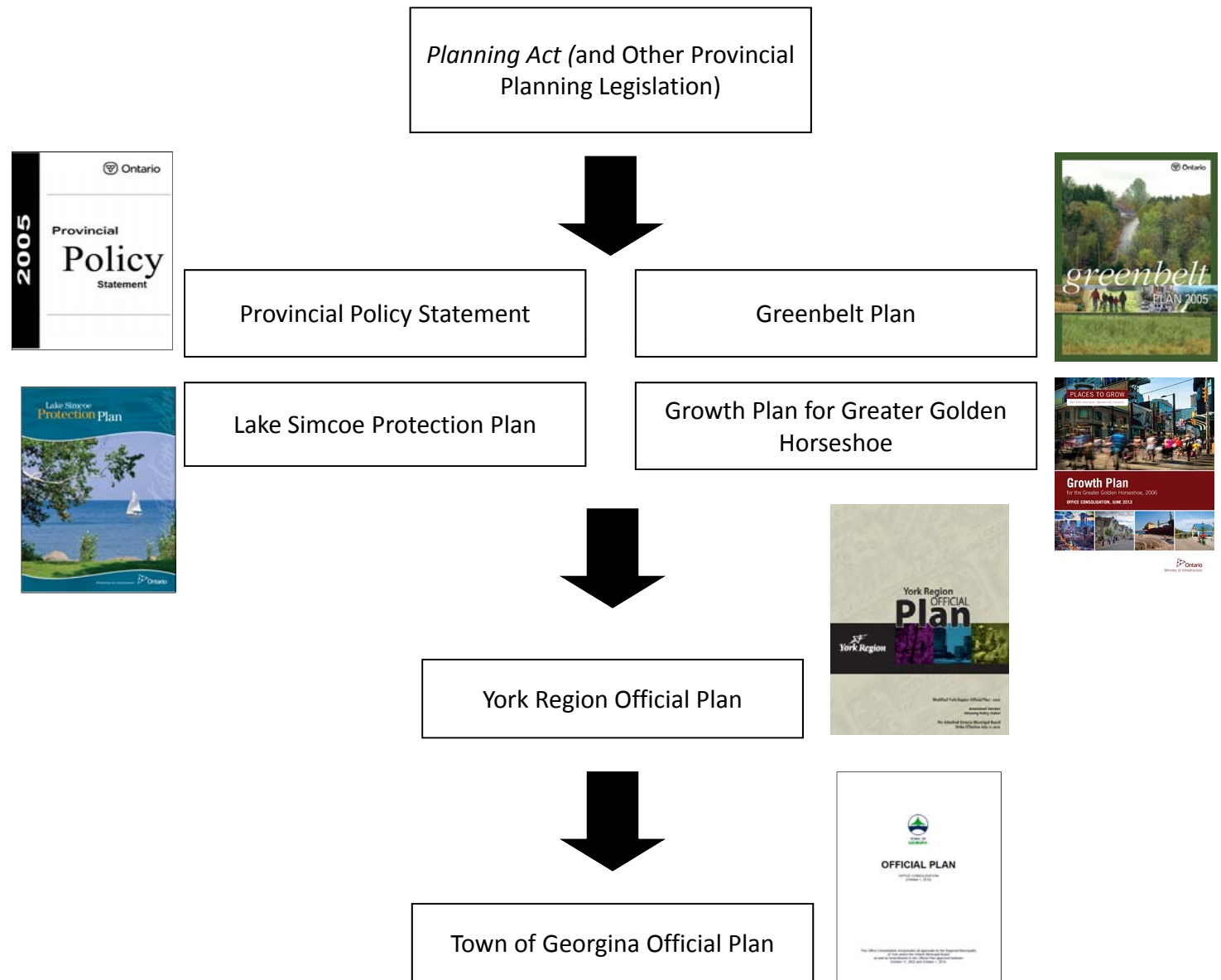
Population
Forecast

Define the
Character of
Your Hamlet

Opportunities
and Constraints

Future
Development
Objectives

Why Review?



OUTLINE

Agenda

Official Plans

Why Review?

Greenbelt Plan

Population
Forecast

Define the
Character of Your
Hamlet

Opportunities
and Constraints

Future
Development
Objectives

Next Steps

Current OP

- Guiding Principles and Objectives
 - Natural Environment
 - Lake Simcoe and its Tributaries
 - Growth Management
 - Rural and Agricultural Areas
 - Healthy Communities
 - Economic Development and Financial Sustainability
- Land Use Policies
- Healthy Communities
- Servicing and Infrastructure
- Development Review and Implementation

OUTLINE

Agenda

Official Plans

Why Review?

Greenbelt Plan

Population
Forecast

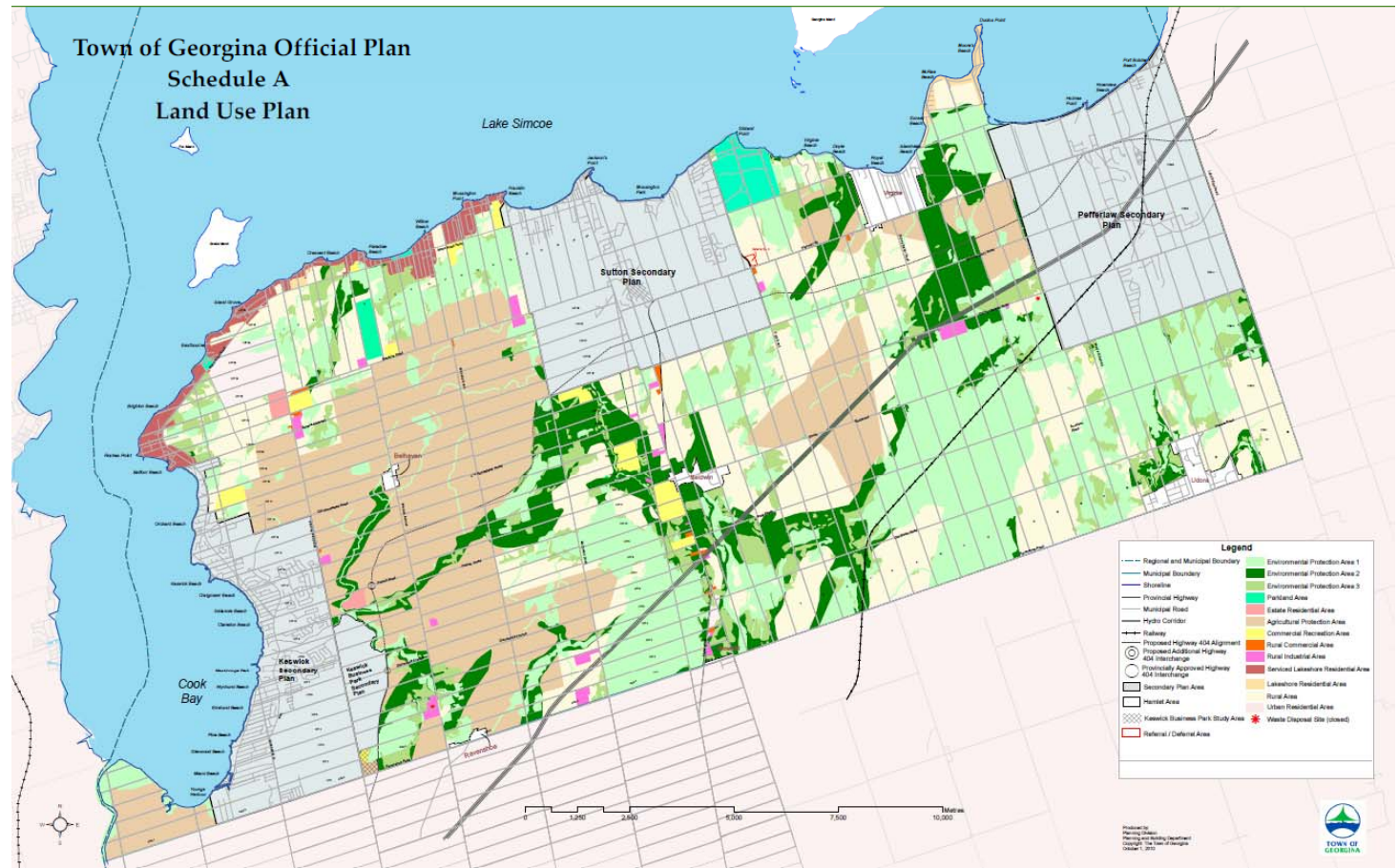
Define the
Character of Your
Hamlet

Opportunities
and Constraints

Future
Development
Objectives

Next Steps

Current OP Schedule



OUTLINE

Agenda

Official Plans

Why Review?

Greenbelt Plan

Population
Forecast

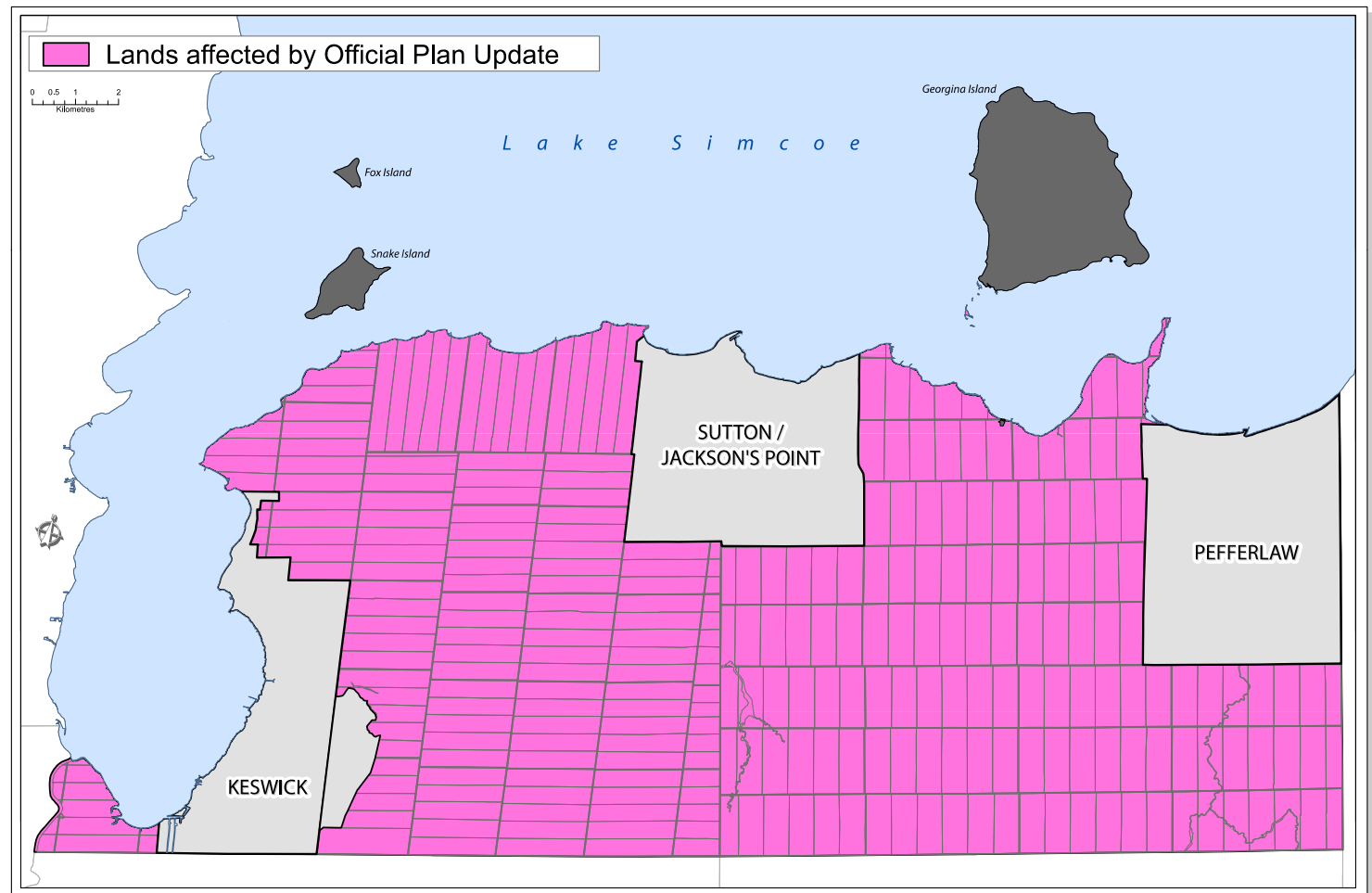
Define the
Character of Your
Hamlet

Opportunities
and Constraints

Future
Development
Objectives

Next Steps

Lands Affected by Update



OUTLINE

Agenda

Official Plans

Why Review?

Greenbelt Plan

Population
Forecast

Define the
Character of
Your Hamlet

Opportunities
and Constraints

Future
Development
Objectives

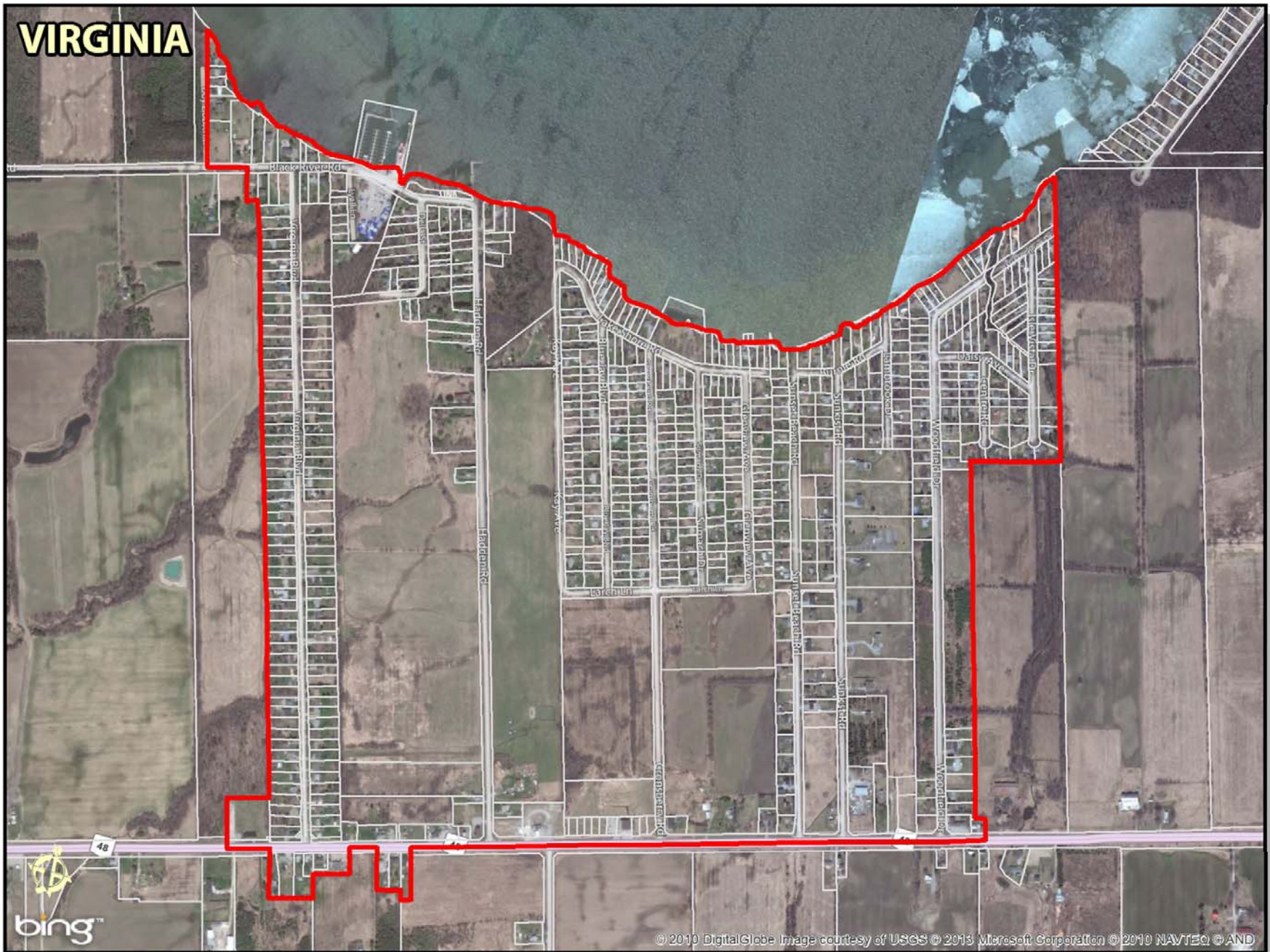
Greenbelt Plan

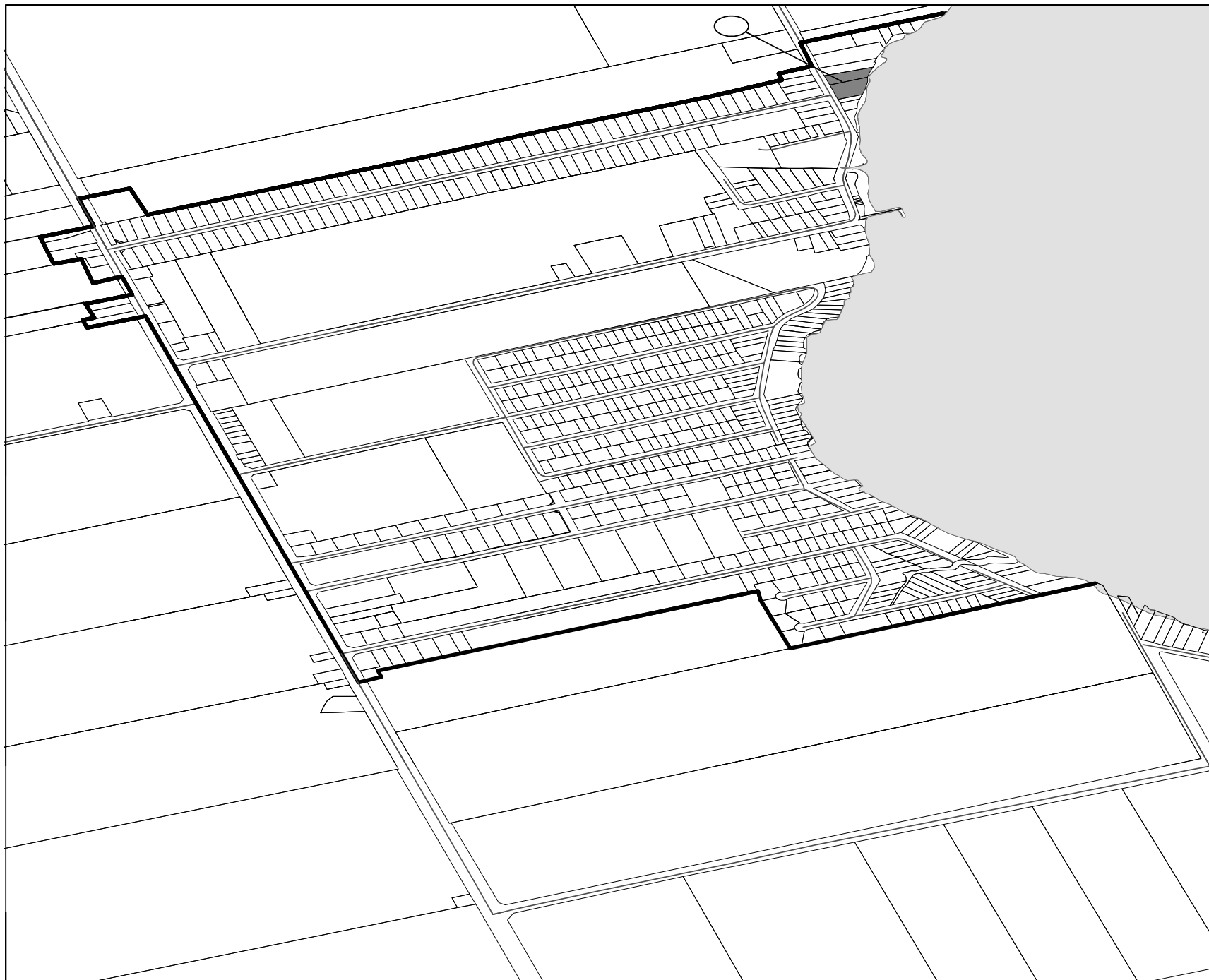
3.4.3 Hamlet Policies

For lands within Hamlets in the Protected Countryside, the following policies shall apply:

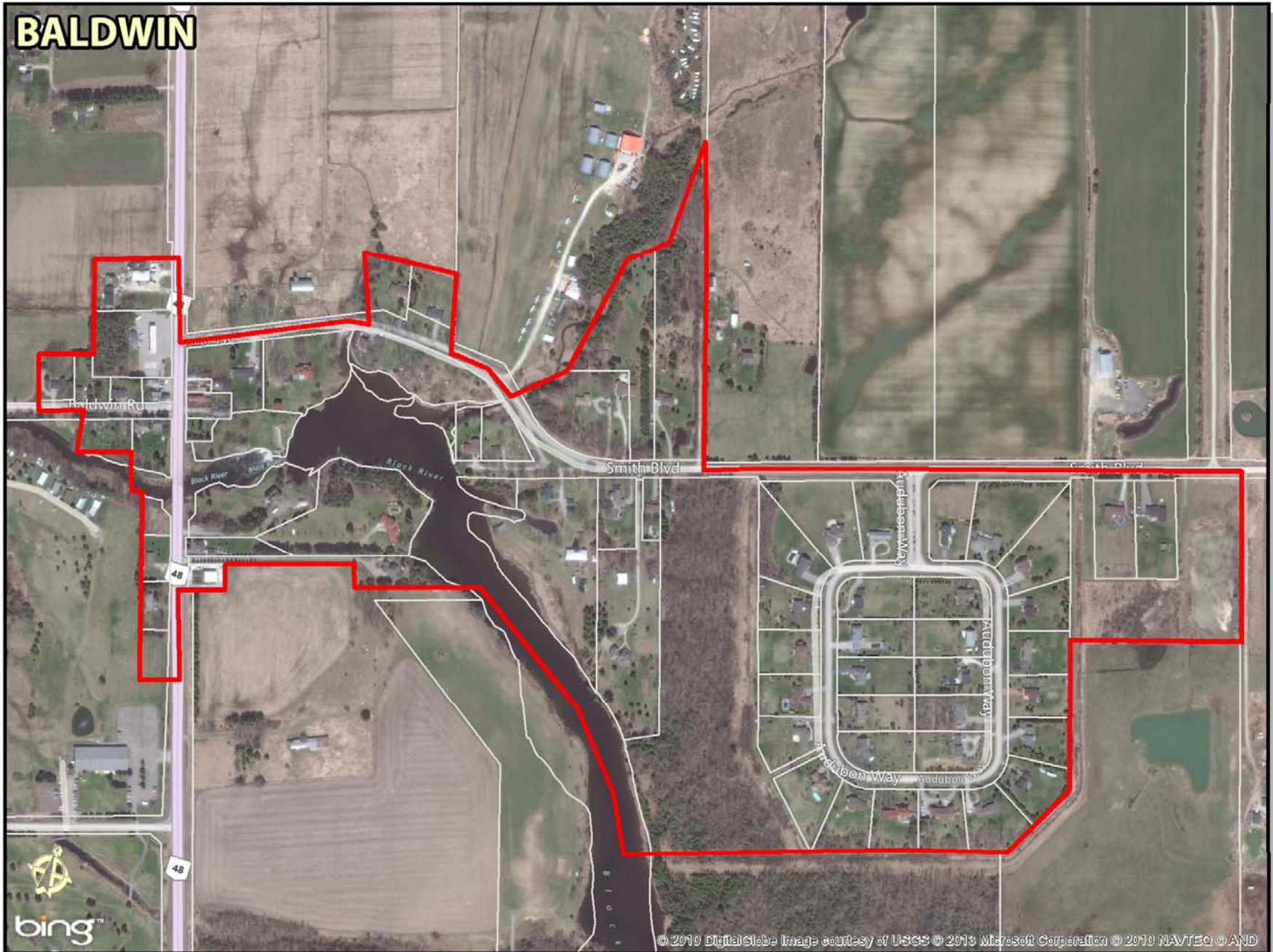
1. Hamlets, as identified in municipal official plans and within their approved boundaries as they existed on the date this Plan came into effect, continue to be governed by municipal official plans and related programs or initiatives and are not subject to the policies of this Plan, save for the external connections policies of section 3.2.5. This Plan permits infill and intensification of Hamlets subject to appropriate water and sewage services.
2. Outside of specialty crop areas, minor rounding out of Hamlet boundaries at the time of municipal conformity is also permitted in keeping with the character of the Hamlet. This rounding out is only permitted subject to the infrastructure policies contained in section 4.2 of this Plan and municipal official plans.

VIRGINIA



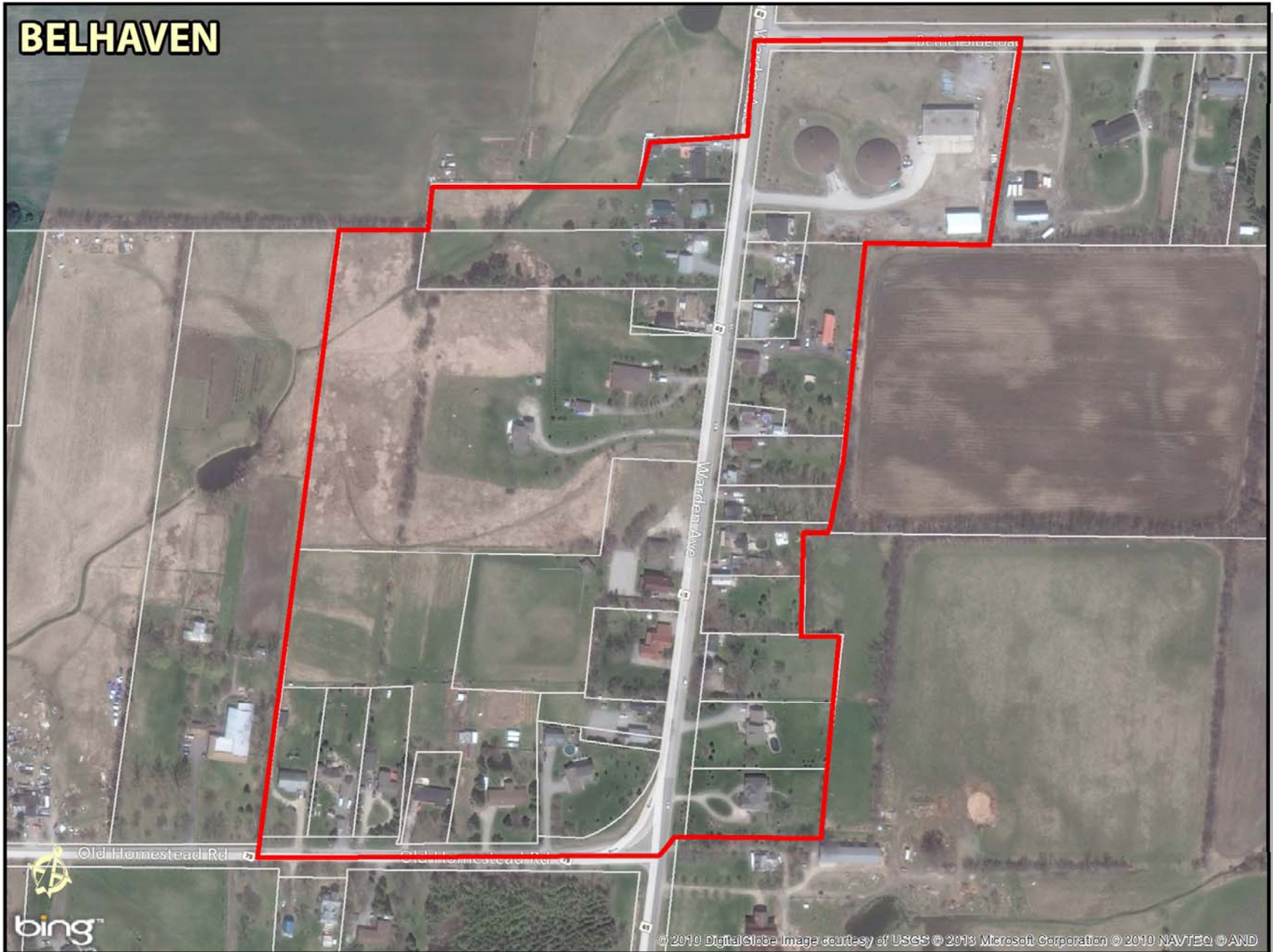


BALDWIN





BELHAVEN





OUTLINE

Agenda

Official Plans

Why Review?

Greenbelt Plan

Population Forecast

Define the
Character of
Your Hamlet

Opportunities
and Constraints

Future
Development
Objectives

Population Forecast

	2006	2013	2016	2021	2026	2031
Regional Pop'n for Georgina (Totals) [1]	44,500	47,500	52,800	57,900	63,900	70,300
Keswick [2] [3]	25,400	26,300	28,800	32,300	36,500	41,000
Sutton/J Pt [2] [3]	7,100	9,000	11,450	13,000	14,500	15,150
Pefferlaw [2]	2,800	2,900	3,150	3,100	3,100	3,000
Estimated Rural, Hamlet, Shoreline & Maple Lake Estates [2]	9,200	9,300	9,400	9,500	9,800	11,150

[1] Source: York Region Population Estimate – June 30, 2013 (Office of the CAO, York Region Long Range Planning Branch) and York Region Official Plan.

Note: Population figures include an adjustment for the census undercount

[2] Source: York Region Population Forecast by Traffic Zone

[3] Full build out of Keswick and Sutton/Jackson's Point will be dependent upon infrastructure expansion (water and sewer).

OUTLINE

Agenda

Official Plans

Why Review?

Greenbelt Plan

Population
Forecast

Define the
Character of
Your Hamlet

Opportunities
and Constraints

Future
Development
Objectives

Define the Character of Your Hamlet

- Physical
- Social
- Demographic
- Economic
- Environmental
- Unique features



OUTLINE

Agenda

Official Plans

Why Review?

Greenbelt Plan

Population
Forecast

Define the
Character of
Your Hamlet

**Opportunities
and Constraints**

Future
Development
Objectives

Opportunities and Constraints

- What opportunities are there for improving the character of the community?
- What constraints are there that may make it more difficult to implement the opportunities?

OUTLINE

Agenda

Official Plans

Why Review?

Greenbelt Plan

Population
Forecast

Define the
Character of
Your Hamlet

Opportunities
and Constraints

Future
Development
Objectives

Future Development Objectives

How much Growth should occur in
your community ?



Under what conditions?



OUTLINE

Agenda

Official Plans

Why Review?

Greenbelt Plan

Population
Forecast

Define the
Character of Your
Hamlet

Opportunities
and Constraints

Future
Development
Objectives

Next Steps

Next Steps

- Public Input Report on both Hamlet Open Houses
- Workshop Number 2 – Policy Directions
- Report on Policy Directions Workshop

Contact Information

- Jim Dymment, Project Manager
MHBC Planning
jdymment@mhbcplan.com
- Andrea Furniss, Senior Planner-Policy
Town of Georgina
afurniss@georgina.ca
- Website: <https://georgina.ca/planning.aspx>