



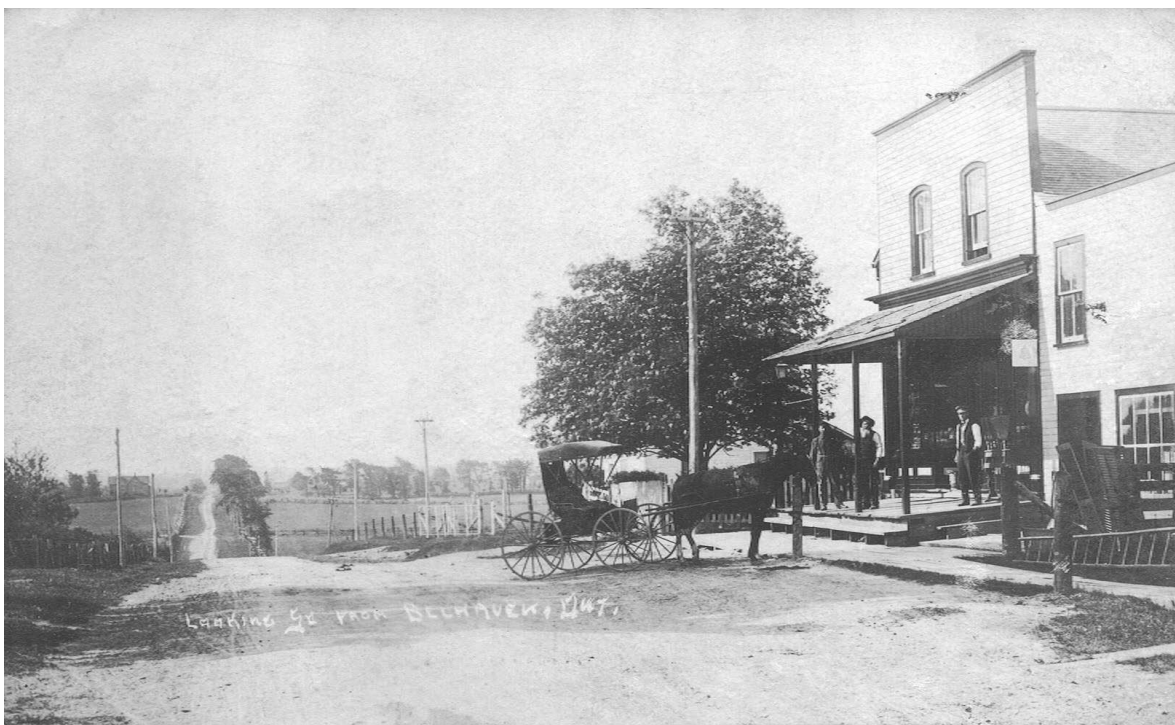
GEORGINA

Plug Mount to Belhaven

As early as the 1820's, there was covered wagon stage services from Belhaven to Toronto.

Decades later when the train from Toronto reached Newmarket, passengers connected to northern towns via the stage coach to Lake Simcoe, and from there, onto steam ships to cross the lake. The stagecoach and its occupants would stop for the night at the hotel and tavern in Belhaven, which was built by Mr. Bovair and operated by Mr. Culverwell.

When the stagecoach mounted the hill in Belhaven, it would be met by an eccentric character, Elemuel Draper. He carried on a tradition of the farm's previous owner, his grandfather Noah Gager. These men met the stage wearing a plug (or 'stove pipe') hat, which is why Belhaven's previous name was 'Plug Mount'. In 1863, the newspaper announced that Plug Mount would now be called Belhaven, though no reason was given. Beginning In the 1860's the North Gwillimbury township council held their meetings at the hotel in Belhaven, the meetings continued (elsewhere) at Belhaven until the township acquired the Civic Centre in the 1970's.



Belhaven looking South down present-day Warden Avenue. The General Store is pictured on the right.