



Lawn Watering Restrictions

Lawn watering restrictions are imposed on properties that are supplied by the Town municipal water system. Your co-operation is requested to ensure a sufficient supply of water is available for domestic, commercial, institutional and fire fighting purposes.

Properties with an even house or building number may water lawns on even calendar dates.

Properties with an odd house or building number may water lawns on odd calendar dates.

Please note that watering is only permitted between the hours of 6:00am - 10:00am and 6:00pm - 10:00pm.

New sod may be watered on all days for the first 30 days after being placed.



STOP

REMEMBER:

****CALL BEFORE YOU START DIGGING****

****CALL BEFORE CLEARING A BLOCKED SEWER****

1-800-400-2255



Payment Method Information

There are several convenient payment options available to you:

- At the Civic Centre, payment can be made using cash, cheque or debit card
- Payments can be made at your financial institution through a Teller or Automated Teller Machine (ATM)
- From the comfort of your home, payments can be made through telephone or online banking with your financial institution - Payee Name is Georgina Water
- By mail - please enclose remittance stub and record account number on your cheque

Payments must be received at the Civic Centre on or before the due date to avoid losing the early payment discount.

*Please ensure you are using the 12 digit water account number located in the top left section of your water and sewer bill for payment.

Outstanding Water / Sewer Accounts

Please note that all unpaid water arrears are transferred to the owner's property tax account. Once transferred, the unpaid balance becomes subject to monthly interest at the prevailing rate and collected in the same manner as property taxes.

Questions about your Water and Sewer Billing?

Contact the Tax and Revenue Division
Monday - Friday 8:30am - 4:30pm
905 476 4301
905 722 6516
georgina.ca



Water & Sewer Billing

2015 Information

Information Inside This Brochure:

- Rate Changes
- Water Rates
- Reading Your Water Meter
- Lawn Watering
- Payment Info



GEORGINA

Thank you for reading the 2015 Water and Sewer Billing information brochure. This pamphlet will provide you with important information about your water and sewer services including rates, consumption, and reading your meter.

Rate Change

The revised 2015 metered water consumption and sewer rates were adopted by Town Council on April 1, 2015 to ensure the necessary revenue was provided for the required operating expenditures for the water and sewer systems. The rate changes represent an overall 13.2% increase over 2014 rates and are necessary to provide for the increasing maintenance and operating costs of both systems to continue safe and reliable water distribution and sewer collection and treatment programs. It is important to note that Georgina’s water and sewer rates remain comparable with all other York Region and surrounding municipalities.

In addition to the metered consumption rate, a “capital cost recovery” fee in the amount of \$12.80 is included with each water and sewer billing issued. The capital cost recovery fee is calculated to provide for future projected capital expenditures for both the water and sewer systems to ensure reserve funds are sufficient to replace aging infrastructures (i.e. existing underground water/sewer mains, pumping stations), as timing and needs arise. The capital cost recovery fee is payable with each billing even if no consumption is calculated.

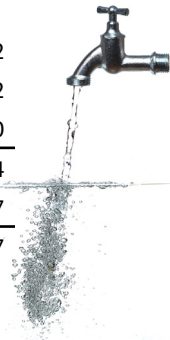
2015 Rates Established — Effective with Billings issued on or after April 1, 2015

- Metered Water Rate \$1.66 per cubic metre (approx. 220 gallons)
- Sewer Rate \$2.06 per cubic metre of water used
- Capital Cost Recovery \$12.80 (quarterly)

Example of a Typical Quarterly Consumption and 2015 Billing

Based on an average of 62 cubic metres used in one quarter

Water	\$102.92
Sewer	\$127.72
Capital Cost Recovery Fee	\$12.80
Total Quarterly Billing	\$243.44
Early Payment Discount (2.0%)	- \$4.87
Net Quarterly Billing	\$238.57



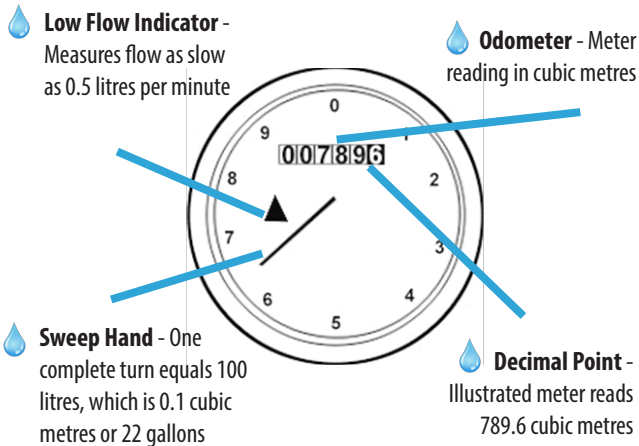
Did You Know?

The average Georgina water user consumes approximately 62 cubic metres (13,640 gallons) of water per quarter. This equals about \$2.61 per day for water and sewer. You can use your water meter to find out how much you consume. Knowing how to read your water meter allows you to monitor your water consumption and detect leaks in your plumbing or fixtures.

Reading Your Meter

Your water meter reads in cubic metres. Your consumption is displayed much like the odometer of a car. Every 100 litres of water consumed causes the sweep hand to make one revolution, and causes the measured total to increase by 0.1 cubic metres (the black wheel on the odometer). Ten turns will move the first white wheel one increment. Newer radio read water meters labelled “E-Coder (R900i)”, are designed to go into a “sleep” mode to conserve energy. Simply shine a flashlight on the face of the water meter to bring the meter display out of “sleep” mode to fully display the water meter face.

Water Meter Face



MONITORING WATER USE

Daily Consumption:

Write down your meter reading at a set time during the day. Write another reading the same time the next day. The difference was your water consumption for that 24 hour period.

Water Leaks are Costly:

Higher than normal water consumption may indicate a leak. Customers are responsible for all water consumption, including consumption caused by leaks. Check the meter reads regularly and check the low flow indicator (red triangle) on the water meter on a regular basis to help detect leaks. The low flow indicator will NOT turn unless water is being used. Ensure all toilets, faucets and water softeners are functioning properly. These are the main causes of most undetected leaks.